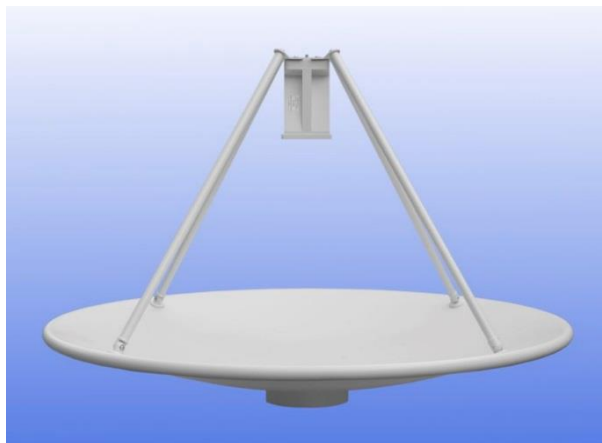


0.9 m Aluminium Reflector & 1 - 18 GHz Wideband Feed fitted with an SMA Connector and Radome

Catalogue number **QSR-900-A-457 & QWF-SL-1-18-S-R**

Steatite reference **QMS-00838**

Contents **Summary**
Typical Gain / Antenna Factor
Typical Beamwidth / Patterns

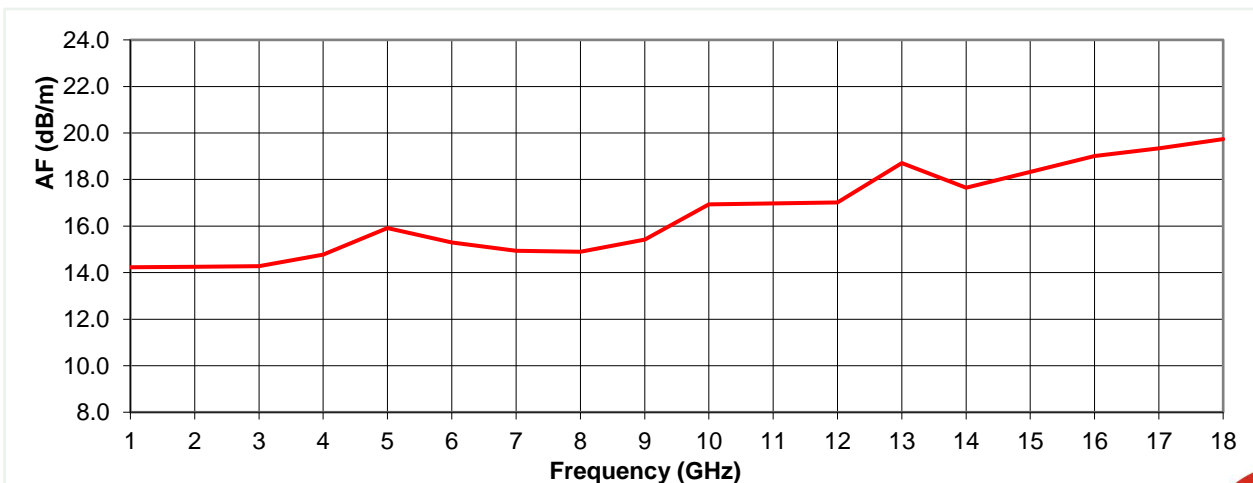
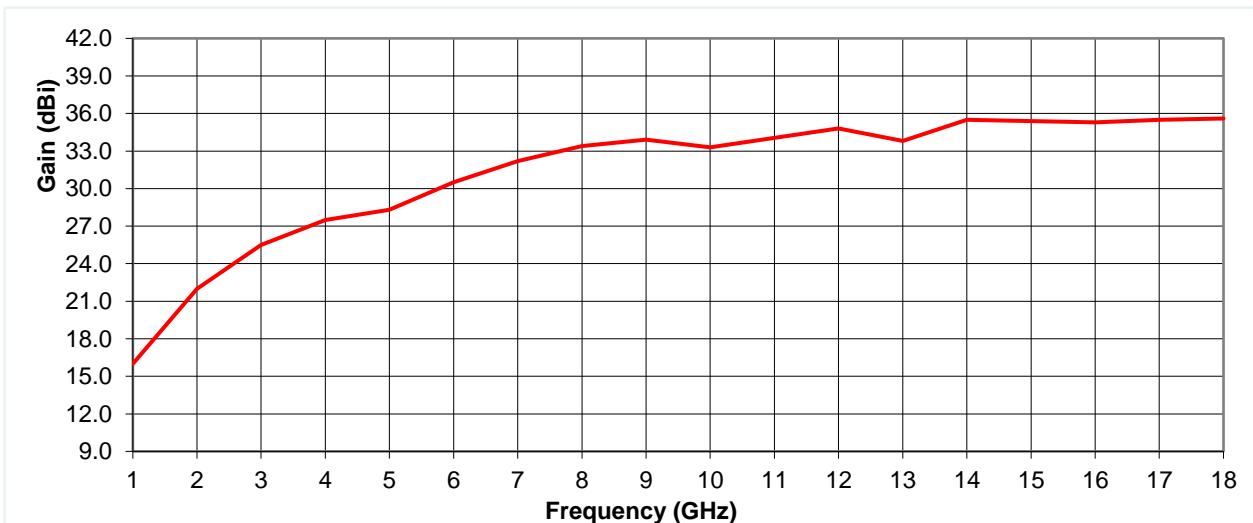


Typical Specification

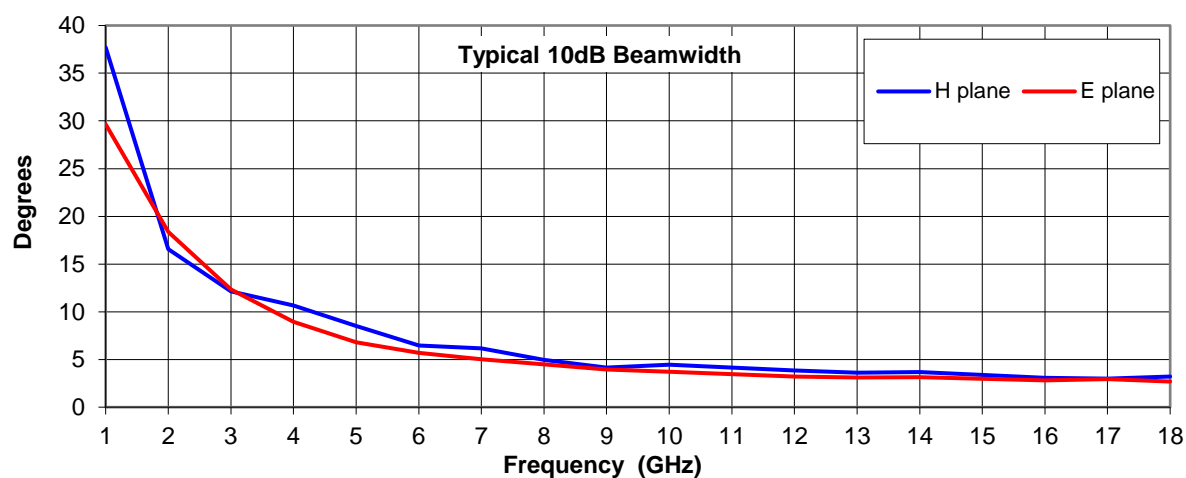
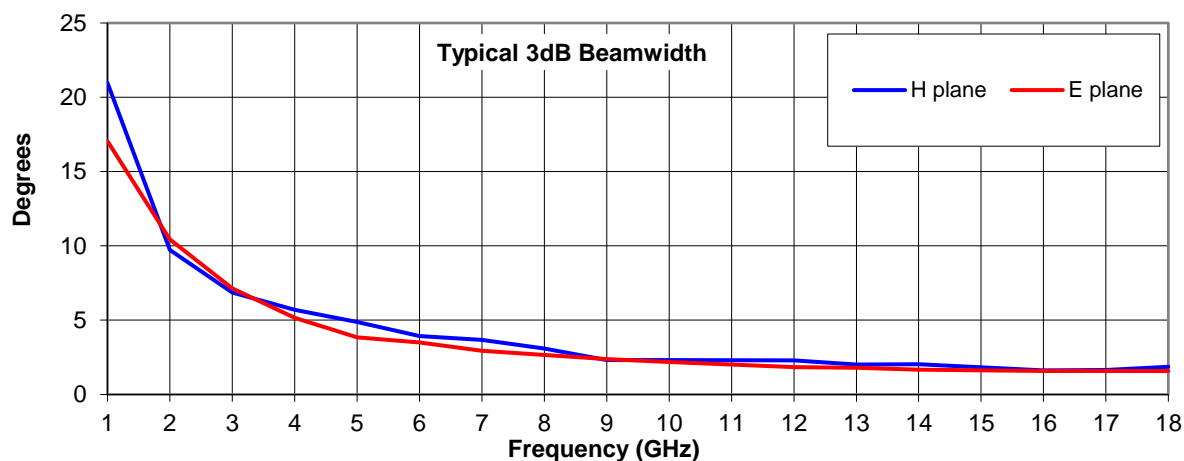
Frequency	1 to 18 GHz
Connector Type	SMA type jack
Power Handling	40 Watt c.w.
VSWR	Typically < 2.5:1
Gain	16 to 35.6 dBi
Antenna Factor	14.2 to 19.7 dB/m
3dB Beamwidth	2 to 21 degrees
10dB Beamwidth	3 to 38 degrees
Weight	8 kg nominal
Maximum Size	Reflector diameter 935 mm
Mounting	8 holes, tapped M6, 125 mm pitch circle diameter
Construction	Aluminium reflector, powdercoat finish. Composite aluminium and plastic feed, painted.

Typical Antenna Gain / Factor

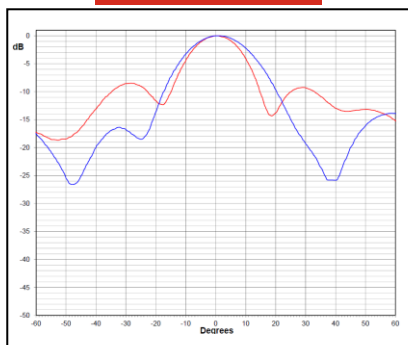
This is calculated by reference to standard gain horn antennas, and cross checked with reference to the antenna beamwidth, with an estimated error of +/- 0.8dB.



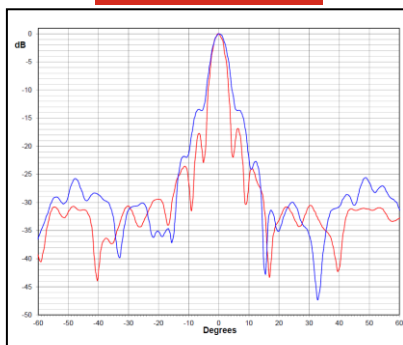
Typical Beamwidth / Radiation Patterns



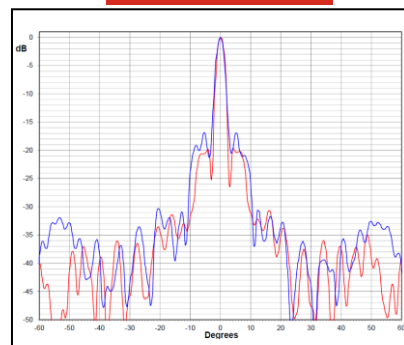
1 GHz



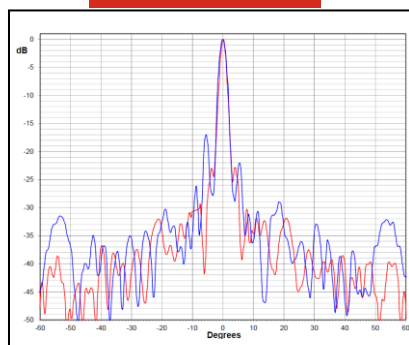
5 GHz



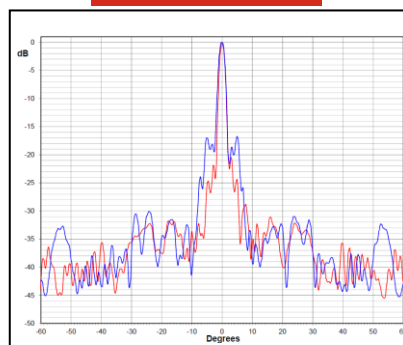
9 GHz



14 GHz



18 GHz



Red trace = E-plane, Blue trace = H-plane cut

