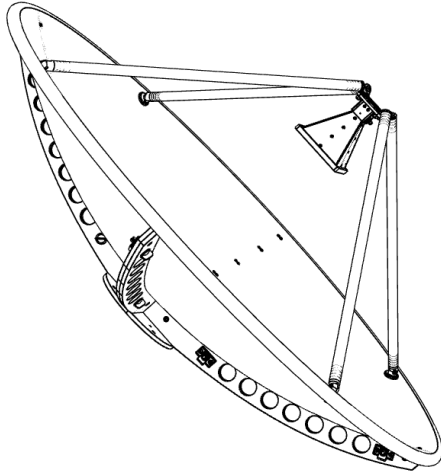


QMS-00774

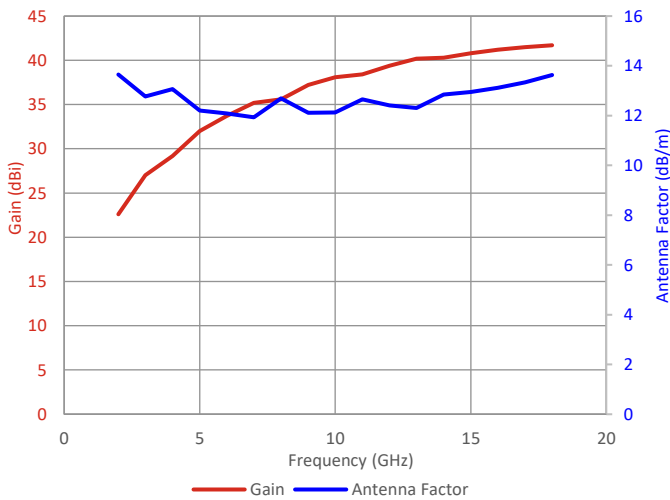


Please contact Steatite Antennas for a full interface control drawing.

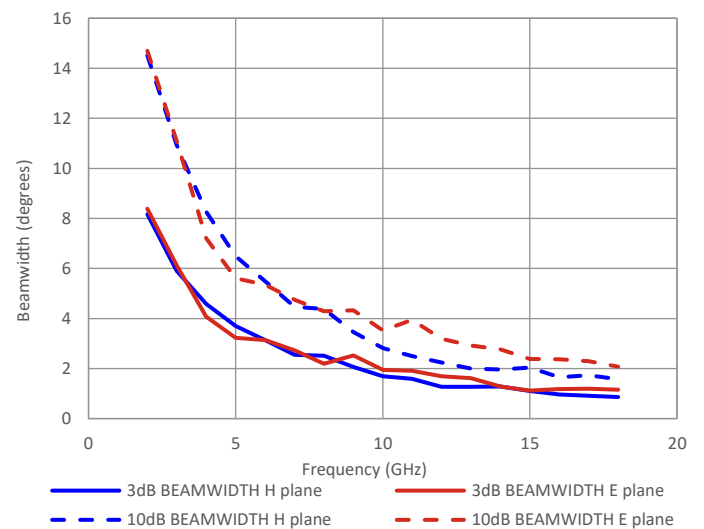
Typical Specification

Frequency	2 to 18 GHz
Connector	2 x SMA jack
VSWR	Typically <2.5:1 above 4GHz
Gain	22.6 to 41.7 dBi
Port-to-Port Isolation	-72.8 to -25.8 dB
3 dB Beamwidth	0.9 to 8.4 degrees
10 dB Beamwidth	2 to 15 degrees
Power	20 Watt c.w.
Size & Weight	Ø1234mm max x 652mm. Mass 18kg nominal.
Mounting	4x tapped M6, equispaced on 125 mm PCD
Environmental	Please contact Steatite for details.

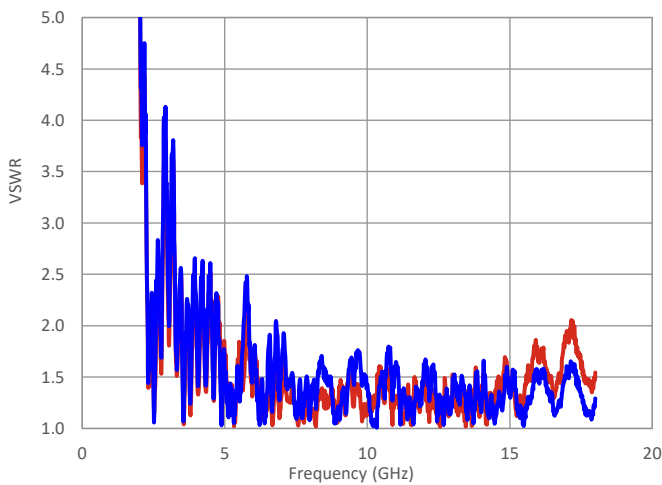
Typical Gain/Antenna Factor



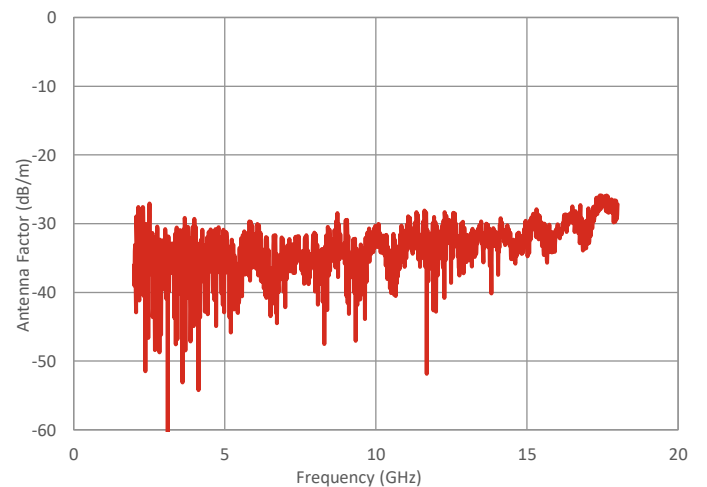
Typical Beamwidth



Typical VSWR



Typical Port-to-Port Isolation



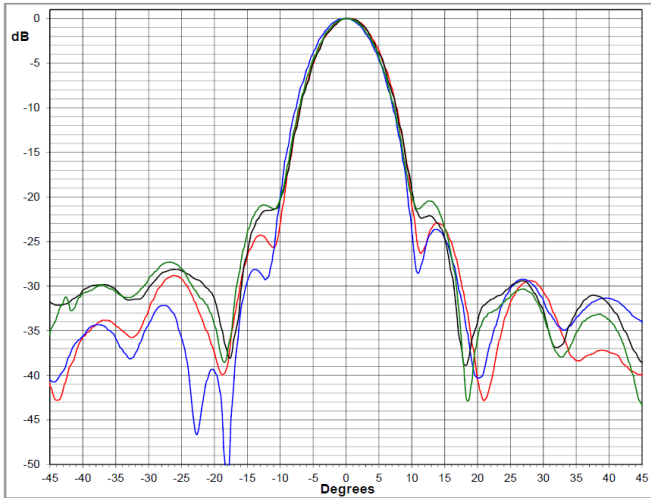
Steatite Antennas reserve the right to change and/or update this specification whereby it is deemed that this would improve either the production and/or performance specification of this part. Information herein should not be disclosed to a third party without the prior written consent of Steatite Antennas.



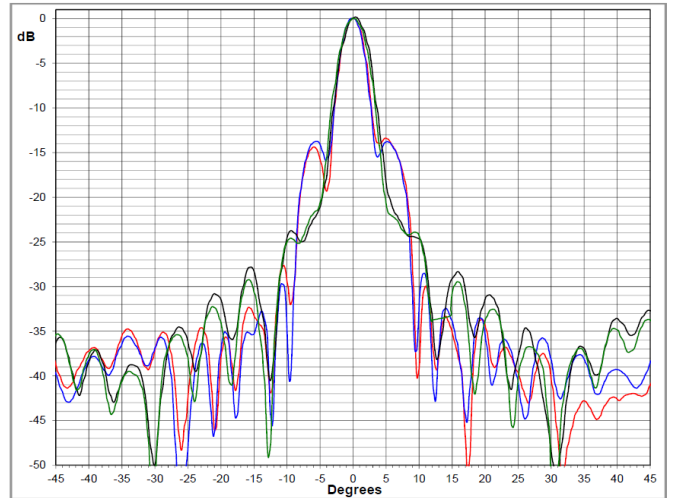
Front connector - Red: E-plane cut; Black: H-plane cut.

Rear connector - Blue: E-plane cut; Green: H-plane cut.

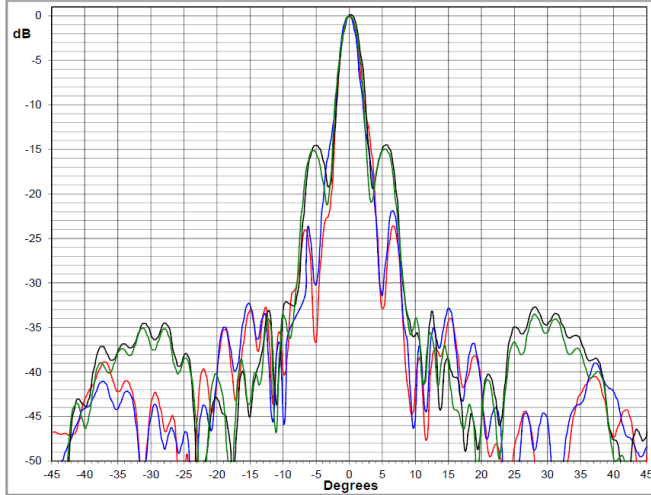
2.0 GHz



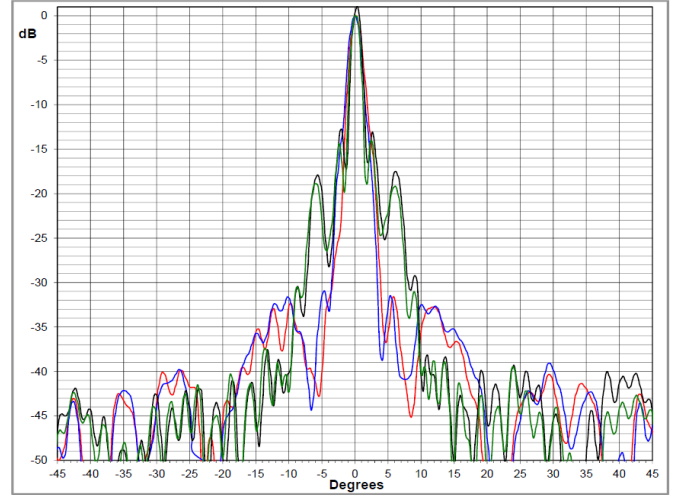
5.0 GHz



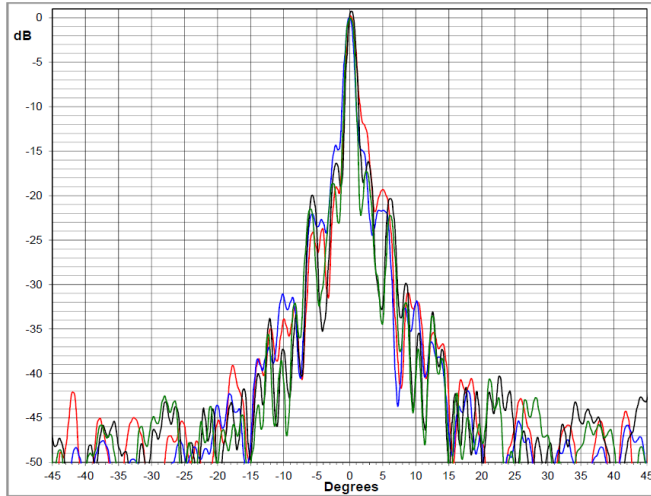
8.0 GHz



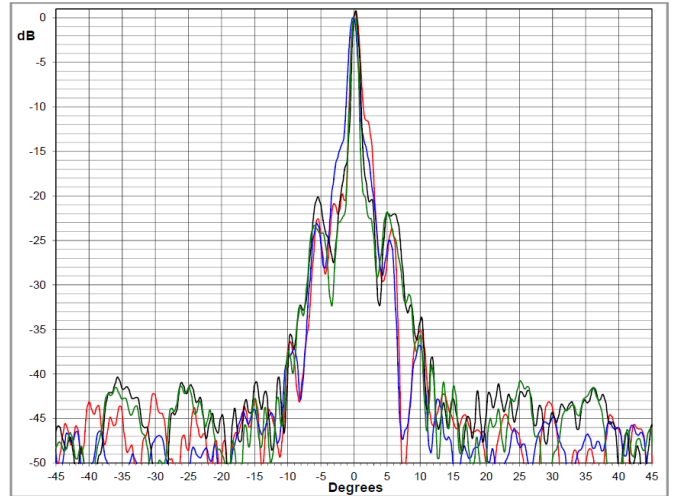
12.0 GHz



15.0 GHz



18.0 GHz



Steatite Antennas reserve the right to change and/or update this specification whereby it is deemed that this would improve either the production and/or performance specification of this part. Information herein should not be disclosed to a third party without the prior written consent of Steatite Antennas.

