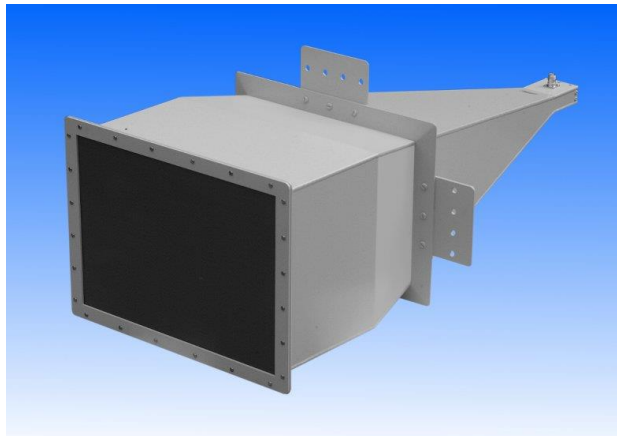


4 - 6 GHz Linearly Polarised 22 dBi Lensed Horn Antenna fitted with an SC Connector and Radome

Catalogue number **QSH-SL-4-6-C-22-R**

Q-par reference **QMS-00724**

Contents **Summary**
Typical Gain / Antenna Factor
Typical Beamwidth / Patterns
VSWR



Typical Specification

Frequency	4 to 6 GHz
Connector Type	SC jack
Power Handling	300 W c.w. 10 kW peak.
VSWR	Typical < 1.5 : 1 2 : 1 maximum.
Gain	21.1 to 22.7 dBi
Antenna Factor	21.2 to 23.1 dB/m
3dB Beamwidth	12 to 15 degrees
Weight	5 kg nominal
Maximum Size	450 x 336 mm aperture x 891 mm long
Mounting	Wrap around flange. Mounting brackets fitted on two faces above centre of gravity.
Construction	Stainless steel, aluminium and engineering plastics.

Typical Antenna Gain / Factor - at 1 metre

This is calculated by reference to standard gain horn antennas, and cross checked with reference to the antenna beamwidth, with an estimated error of +/- 0.8dB.

