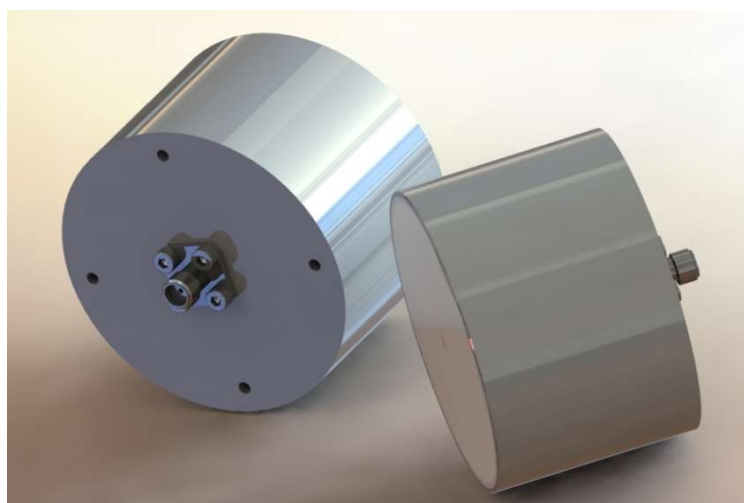


2 - 6 GHz Right Hand Circularly Polarised Spiral Antenna fitted with a TNC Connector and Radome

Catalogue number **QSP-RC-2-6-T-R**

Q-par reference **QMS-00981**

Contents **Summary**
Typical Gain
Typical Beamwidth



Typical Specification

Frequency	2 to 6 GHz
Connector Type	TNC Female
Power Handling	100 Watt c.w.
VSWR	< 2.2:1 (typical), <2.5:1 (max)
Gain	3 to 4 dBiC
3dB Beamwidth	64 to 85 degrees
10dB Beamwidth	127 to 162 degrees
Weight	110 g nominal
Maximum Size	75 mm diameter x 43 mm length (Excluding Connector)
Squint	Typically better than +/-10 degrees across the band
Mounting	3 holes tapped M3, 50 mm pitch circle diameter
Construction	Aluminium and engineering plastics

Typical Antenna Gain / Factor

This is calculated by reference to standard gain horn antennas, and cross checked with reference to the antenna beamwidth, with an estimated error of +/- 0.8dB.

