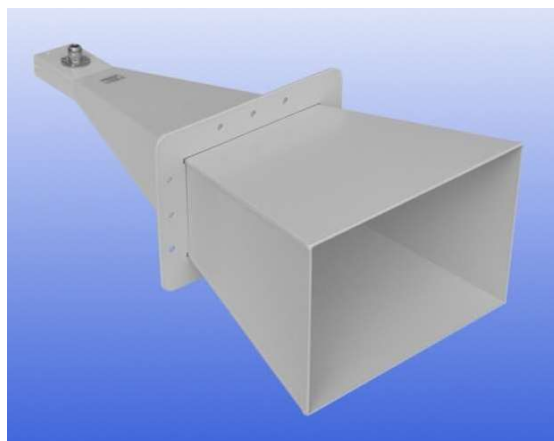


## 4 - 6 GHz Linearly Polarised 20 dBi Horn Antenna fitted with an N type Connector

Catalogue number **QSH-SL-4-6-N-20**

Q-par reference **QMS-00126**

Contents **Summary**  
**Typical Gain / Antenna Factor**  
**Typical Beamwidth / Patterns**  
**VSWR**



Typical photograph. Finish according to customer specifications.

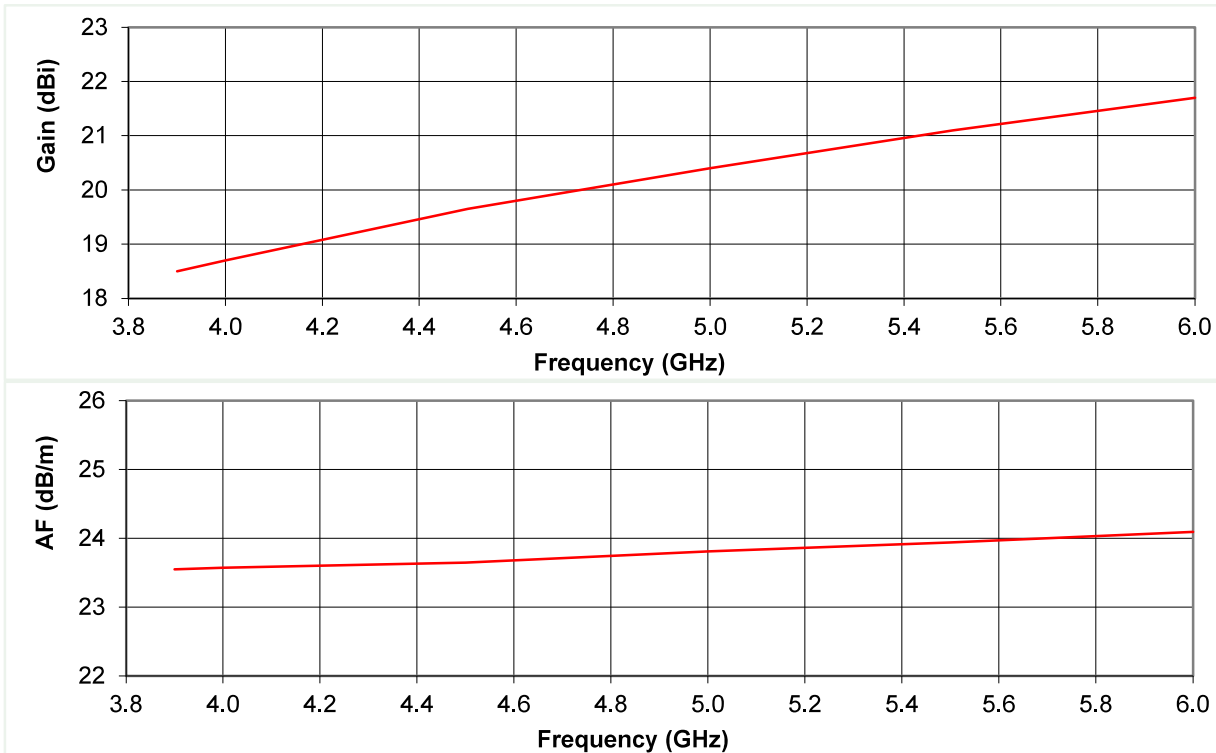


## Typical Specification

<b>Frequency</b>	3.9 to 6 GHz
<b>Connector Type</b>	N type jack
<b>Power Handling</b>	200 Watt c.w.
<b>VSWR</b>	< 1.6:1
<b>Gain</b>	18.5 to 21.7 dBi
<b>Antenna Factor</b>	23.6 to 24.1 dB/m
<b>3dB Beamwidth</b>	14 to 22 degrees
<b>10dB Beamwidth</b>	24 to 39 degrees
<b>Weight</b>	2.2 kg nominal
<b>Maximum Size</b>	255 mm x 185 mm aperture x 550 mm long
<b>Mounting</b>	Mount plate on 2 sides, each with 4 holes of diameter 10mm on 40mm centres.
<b>Construction</b>	Aluminium. Powdercoat finish.

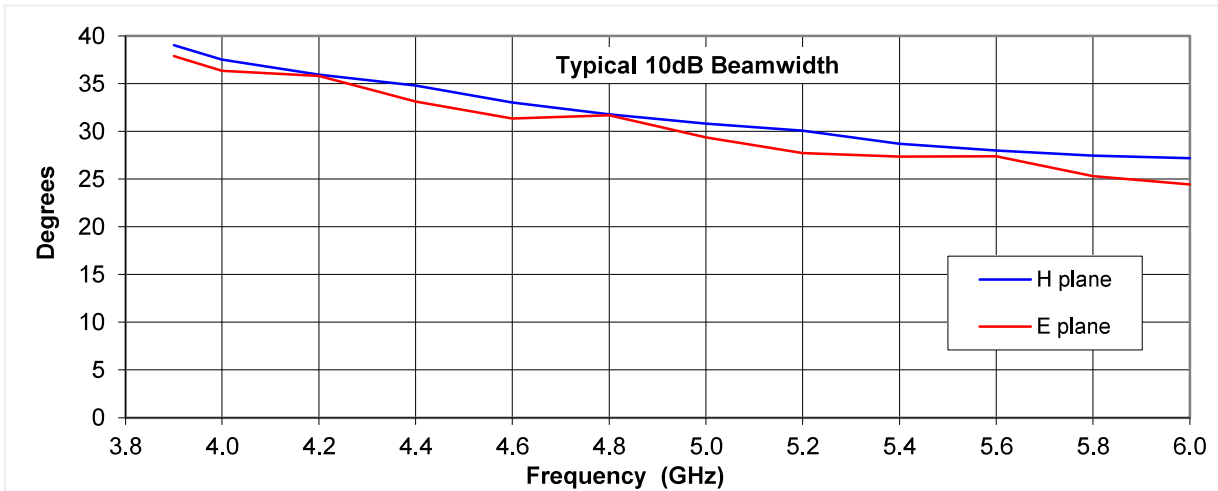
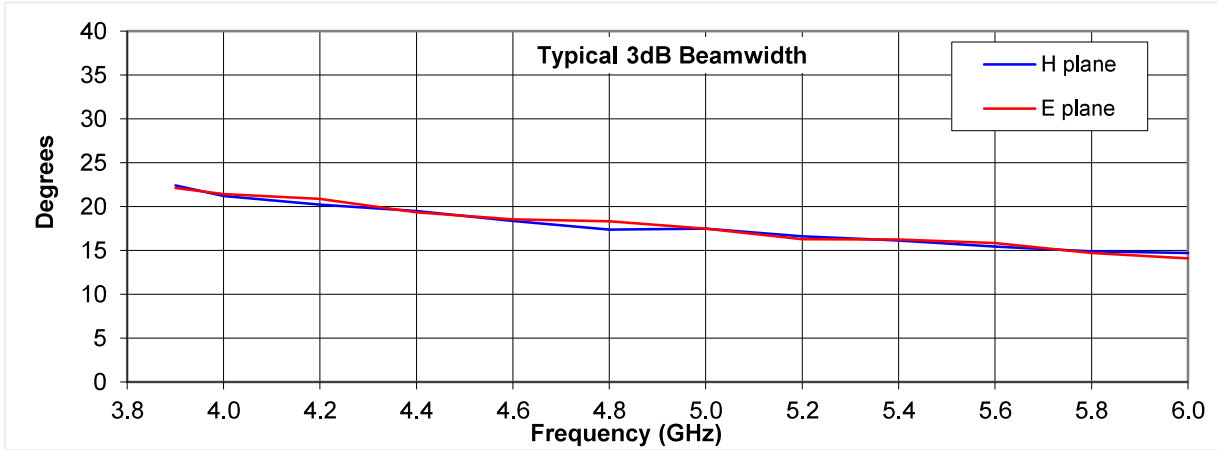
## Typical Antenna Gain / Factor

This is calculated by reference to standard gain horn antennas, and cross checked with reference to the antenna beamwidth, with an estimated error of +/- 0.8dB.

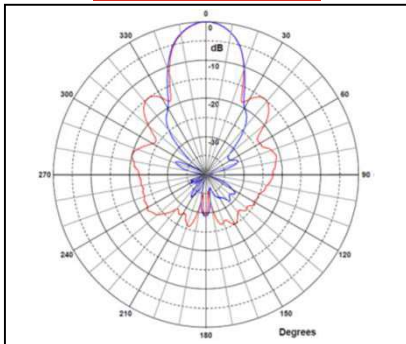


Frequency	Far Field Gain	AF (Far field)	Gain at 1m	AF at 1m
GHz	dBi	dB/m	dBi	dB/m
4.00	18.70	23.55	17.24	25.03
4.50	19.65	23.57	18.11	25.18
5.00	20.40	23.64	18.43	25.78
5.50	21.10	23.81	18.86	26.18
5.90	21.70	23.94	18.91	26.74

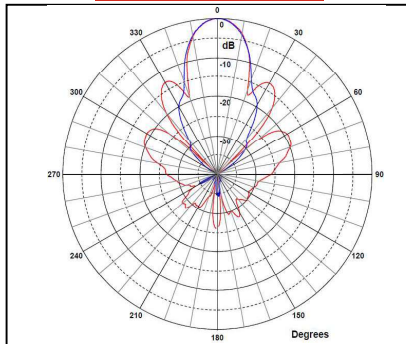




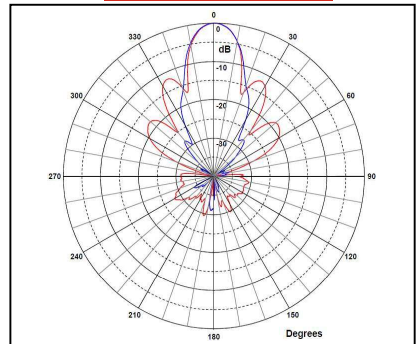
**3.9 GHz**



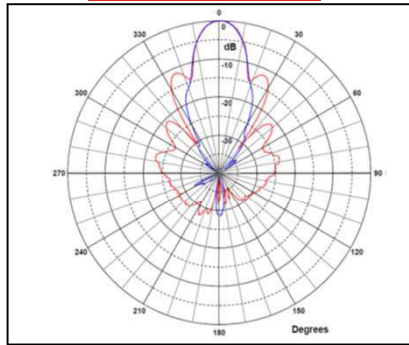
**4.6 GHz**



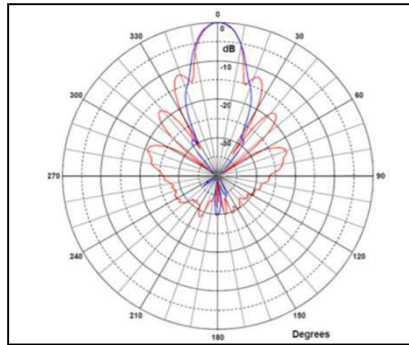
**5.2 GHz**



**5.6 GHz**



**6 GHz**



Red trace = E-plane, Blue trace = H-plane cut

