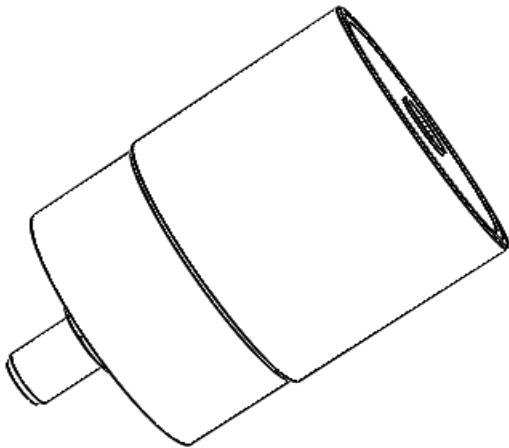


QMS-00992

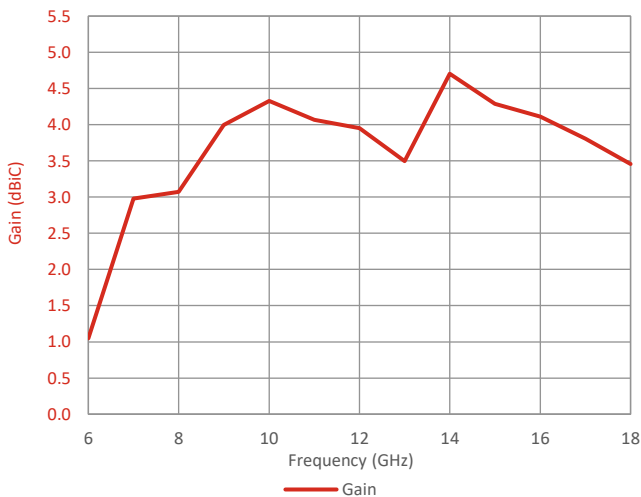


Please contact Steatite Antennas for a full interface control drawing.

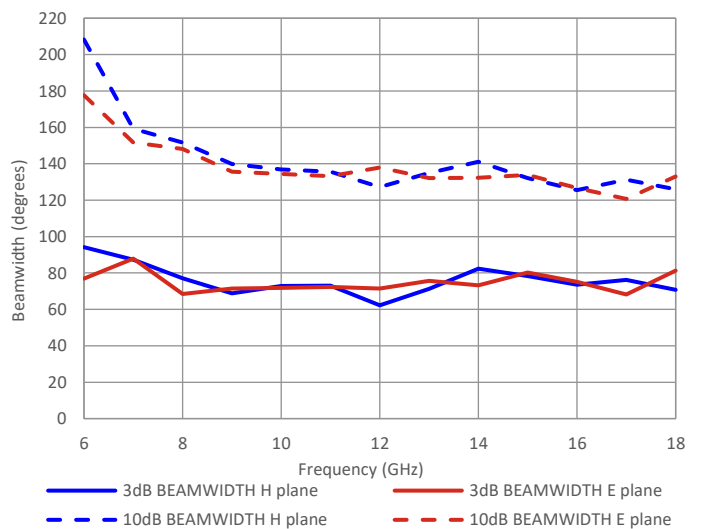
Typical Specification

Frequency	6 to 18 GHz
Connector	SMA Female
VSWR	Typically <2:1
Gain	1 to 4.7 dBi
Axial Ratio	0.3 to 1.2 dB
3 dB Beamwidth	62.2 to 94.2 degrees
10 dB Beamwidth	121 to 208 degrees
Power	2W CW
Size & Weight	Ø30mm x 49.5mm long, 48g nominal
Mounting	4 x M3 on a 20mm PCD (rear mount)
Environmental	Storage Temperature -40°C to +55°C Humidity 60°C, 98% RH

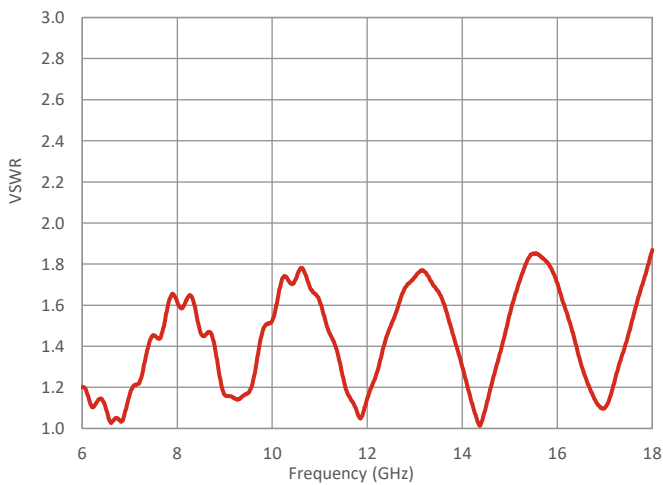
Typical Gain



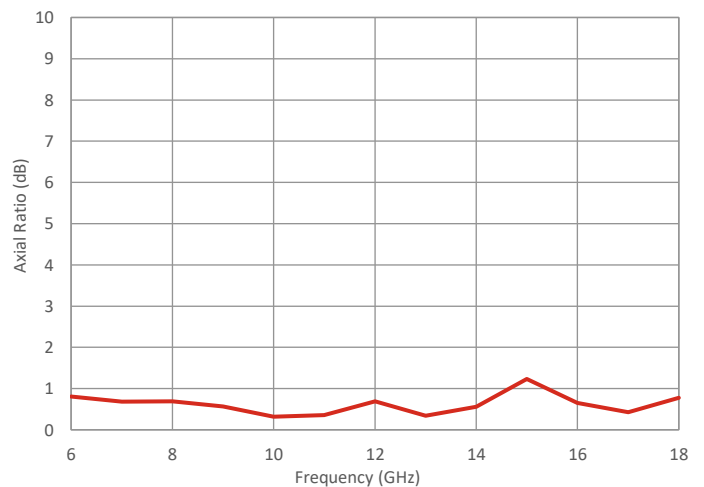
Typical Beamwidth



Typical VSWR



Typical Axial Ratio



Steatite Antennas reserve the right to change and/or update this specification whereby it is deemed that this would improve either the production and/or performance specification of this part. Information herein should not be disclosed to a third party without the prior written consent of Steatite Antennas.

