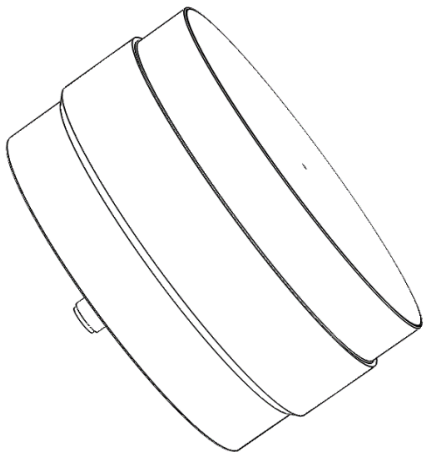


2 - 18 GHz Left Hand Circularly Polarised Spiral Antenna fitted with an SMA type Connector and Radome

QMS-01138

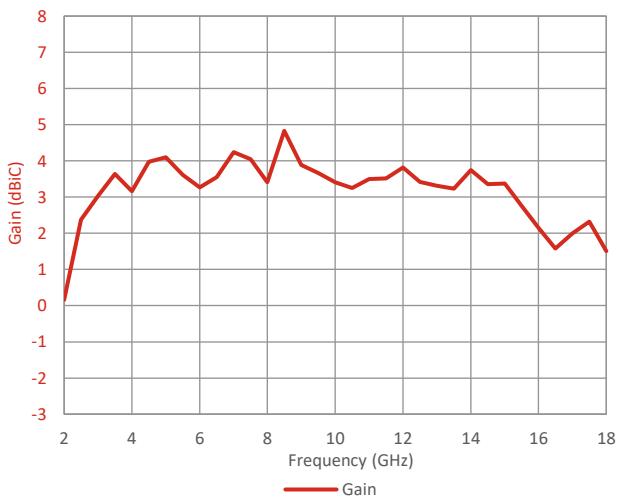


Please contact Steatite Antennas for a full interface control drawing.

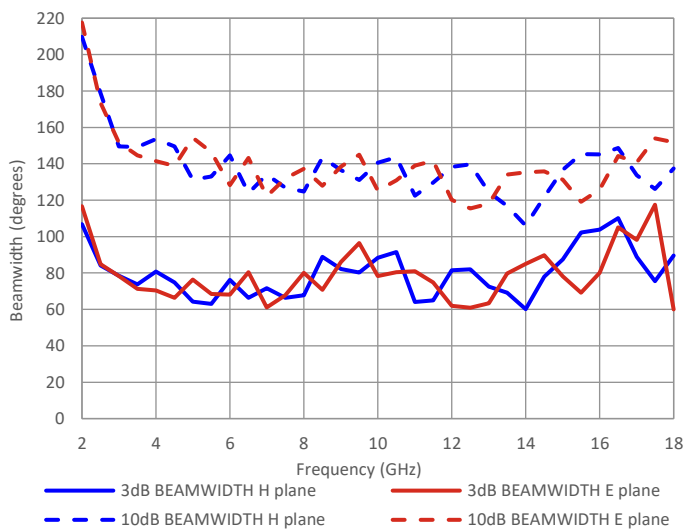
Typical Specification

Frequency	2 to 18 GHz
Connector	SMA (f)
VSWR	Typically < 2.0:1, <2.5:1 Maximum
Gain	0.2 to 4.8 dBi
Axial Ratio	0.2 to 4.2 dB
3 dB Beamwidth	60 to 117.5 degrees
10 dB Beamwidth	106 to 218 degrees
Power	1 watt c.w.
Size & Weight	Ø71mm x 50mm long, 225g nominal
Mounting	4 x M4 tapped holes (Refer to ICD)
Environmental	MIL-STD-810H Storage Temperature: -40°C to +70°C DO160F Shock: (6g, 11ms TPS) Vibration: Figure 8-1, profile C (Fixed wing) Altitude: 50,000ft (15,200m)

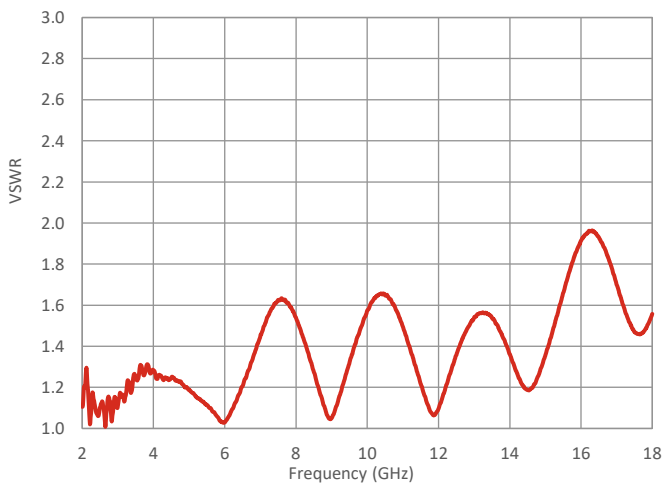
Typical Gain



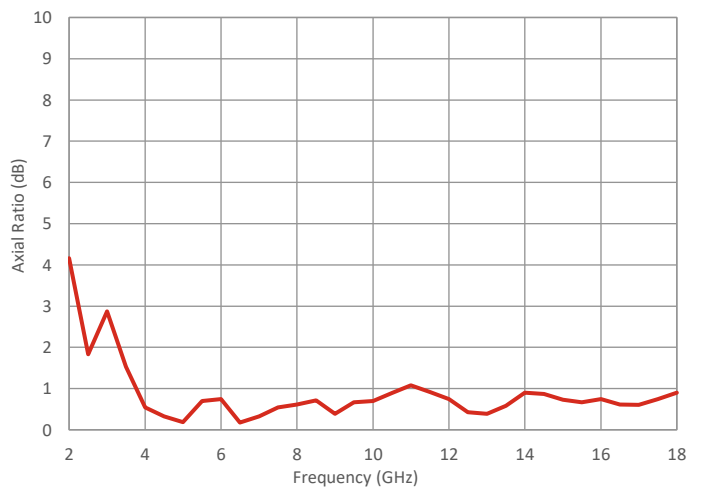
Typical Beamwidth



Typical VSWR



Typical Axial Ratio



Steatite Antennas reserve the right to change and/or update this specification whereby it is deemed that this would improve either the production and/or performance specification of this part. Information herein should not be disclosed to a third party without the prior written consent of Steatite Antennas.

