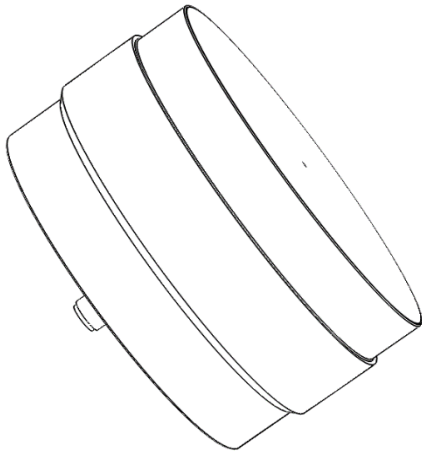


**2 - 18 GHz Right Hand Circularly Polarised Spiral Antenna fitted with an SMA type Connector and Radome**

**QMS-01126**

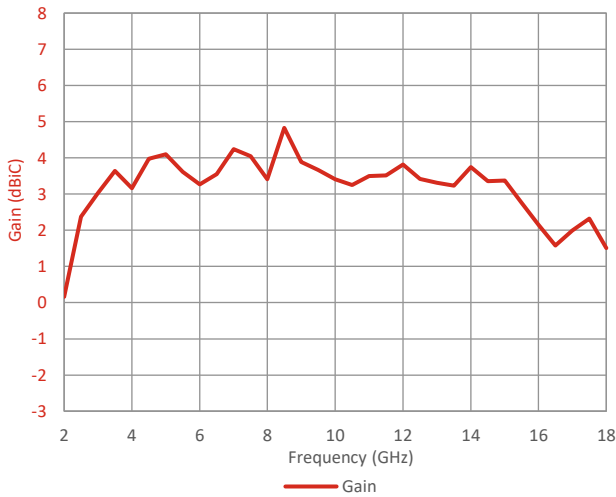


Please contact Steatite Antennas for a full interface control drawing.

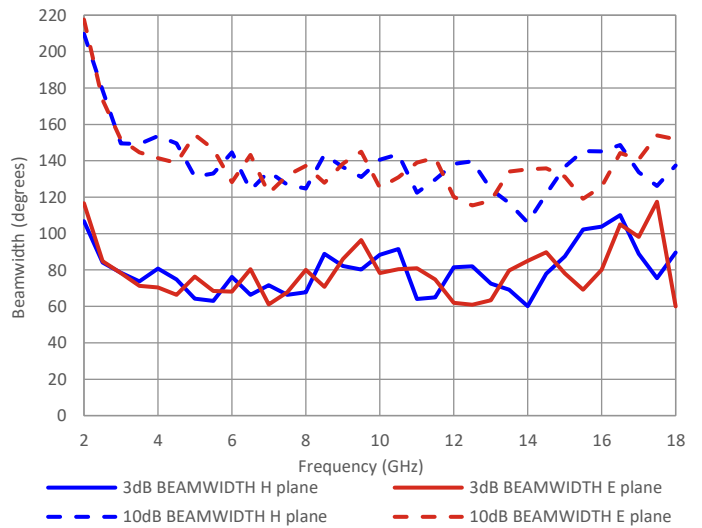
**Typical Specification**

<b>Frequency</b>	2 to 18 GHz
<b>Connector</b>	SMA (f)
<b>VSWR</b>	Typically < 2.0:1, <2.5:1 Maximum
<b>Gain</b>	0.2 to 4.8 dBi
<b>Axial Ratio</b>	0.2 to 4.2 dB
<b>3 dB Beamwidth</b>	60 to 117.5 degrees
<b>10 dB Beamwidth</b>	106 to 218 degrees
<b>Power</b>	1 watt c.w.
<b>Size &amp; Weight</b>	Ø71mm x 50mm long, 225g nominal
<b>Mounting</b>	4 x M4 tapped holes (Refer to ICD)
<b>Environmental</b>	<b>MIL-STD-810H</b> Storage Temperature: -40°C to +70°C <b>DO160F</b> Shock: (6g, 11ms TPS) Vibration: Figure 8-1, profile C (Fixed wing) Altitude: 50,000ft (15,200m)

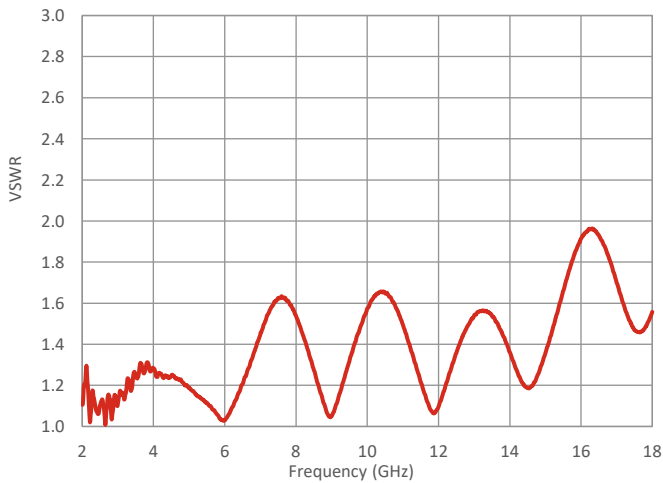
**Typical Gain**



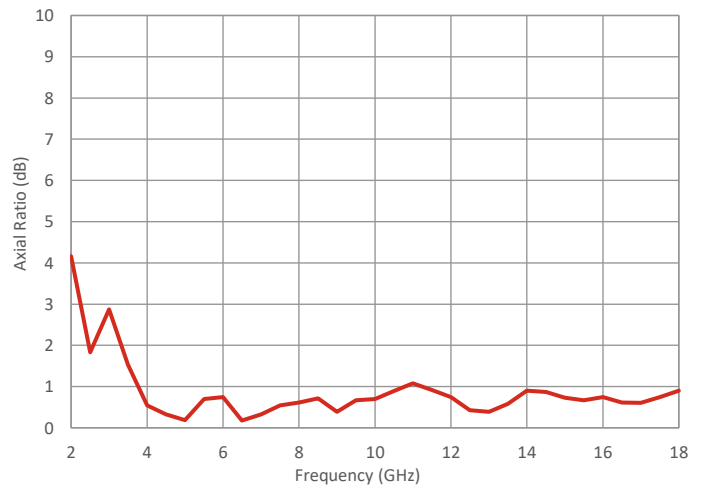
**Typical Beamwidth**



**Typical VSWR**



**Typical Axial Ratio**



Steatite Antennas reserve the right to change and/or update this specification whereby it is deemed that this would improve either the production and/or performance specification of this part. Information herein should not be disclosed to a third party without the prior written consent of Steatite Antennas.

