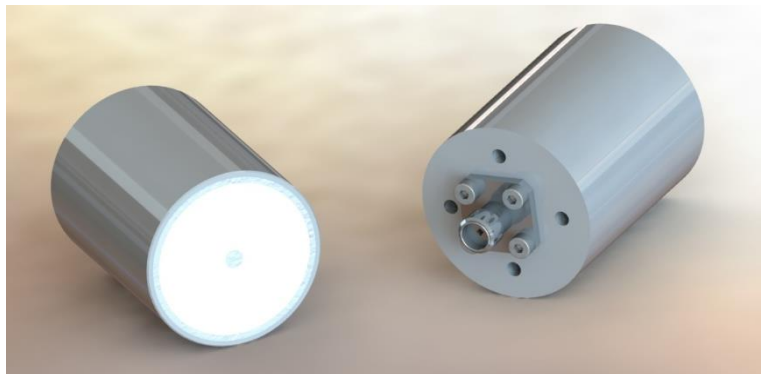


6 - 18 GHz Right Hand Circularly Polarised Spiral Antenna fitted with an SMA type Connector and Radome

Catalogue number **QSP-RC-6-18-S-R**

Steatite reference **QMS-00992**

Contents **Summary**
Typical Gain / Axial Ratio
Typical Beamwidth / Radiation Patterns



QQD06-2 V7.3

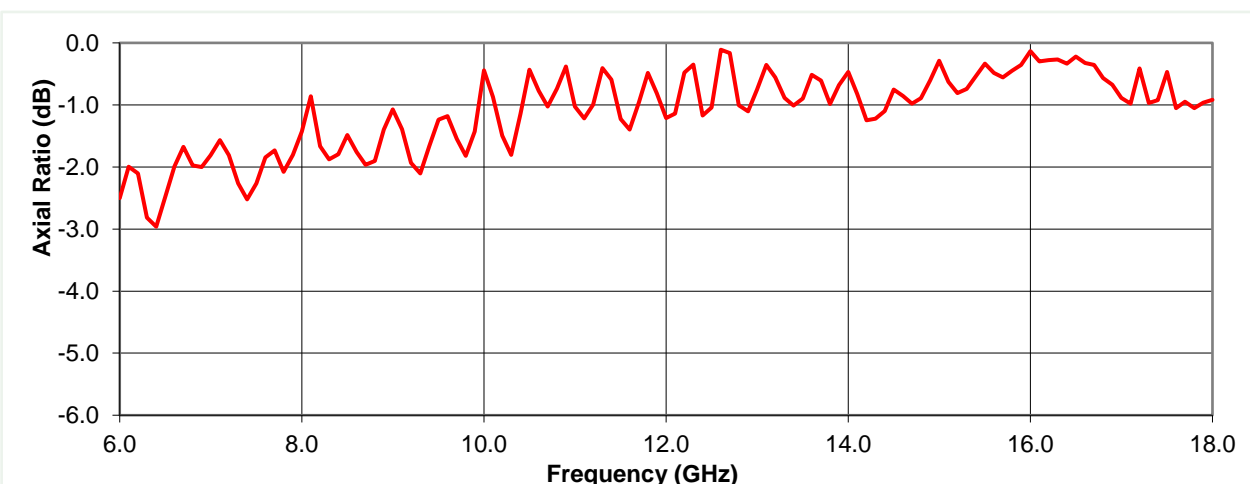
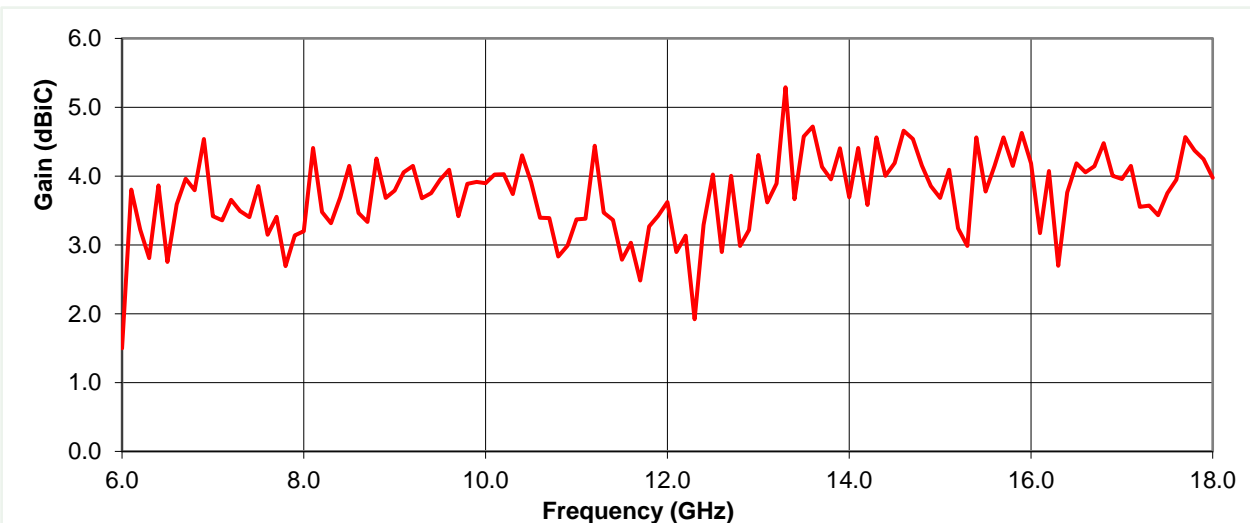
PDM 12/03/2020 6550

Typical Specification

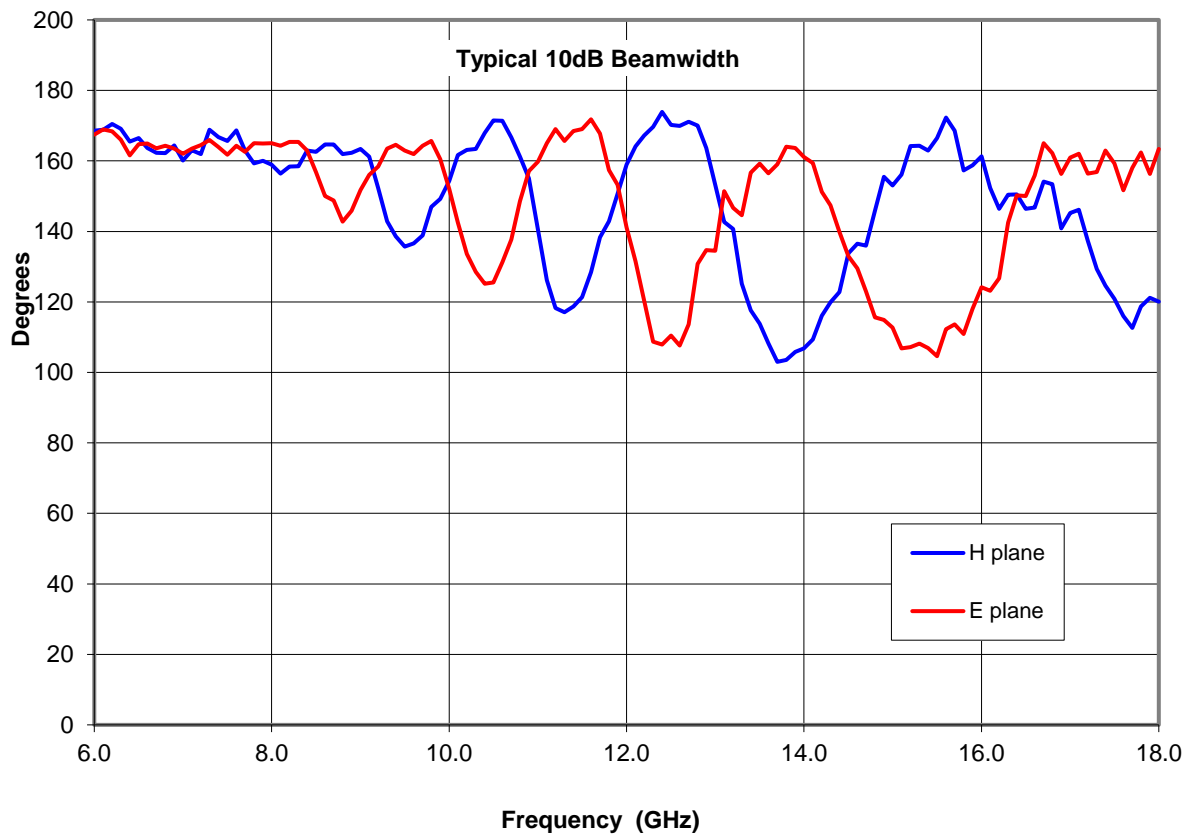
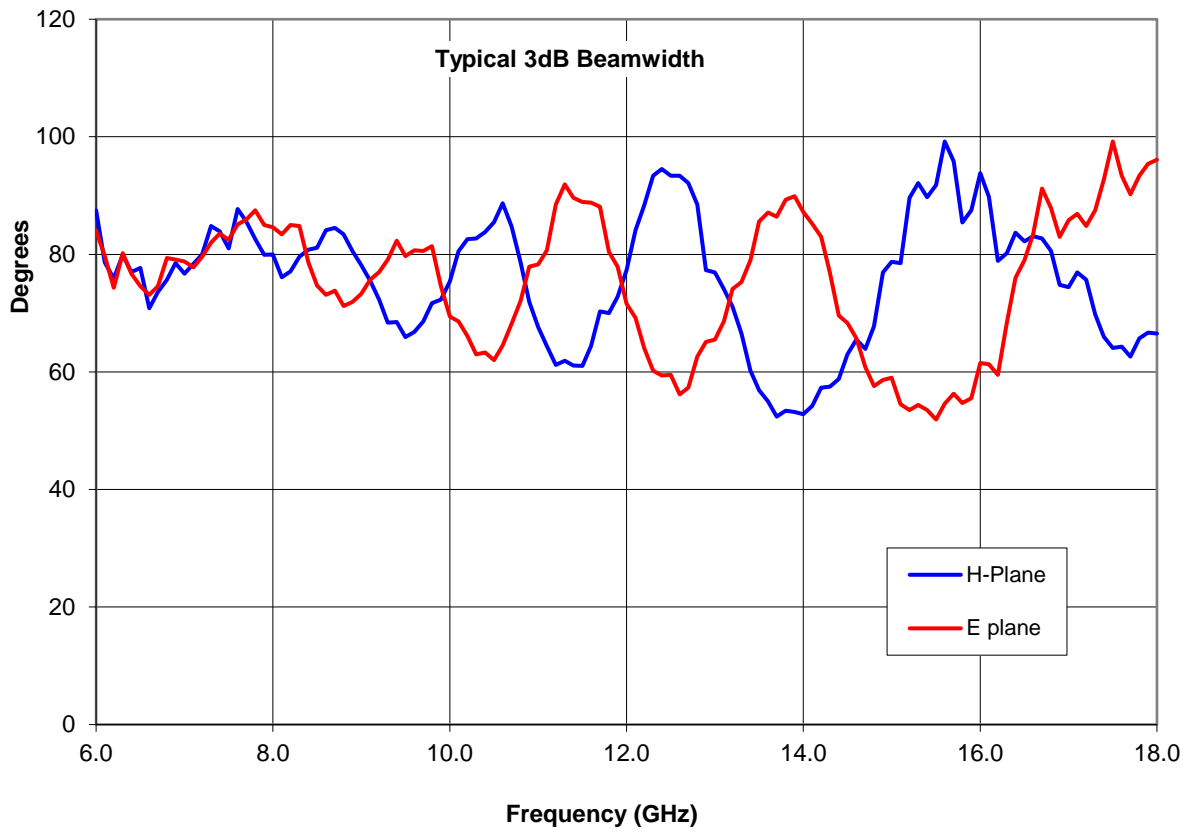
Frequency	6 to 18 GHz
Connector Type	SMA Female
Power Handling	2W CW
VSWR	Typically <2:1
Gain	1.5 to 5.3 dBi
Antenna Factor	45.2 to 50.7 dB/m
3dB Beamwidth	52 to 99 degrees
10dB Beamwidth	103 to 174 degrees
Weight	50g nominal
Maximum Size	30mm Diameter by 40.5mm Length (excluding connector)
Mounting	4 x M3 mounting threads on a 20mm PCD (rear mount)
Construction	Aluminium housing and PTFE front face.

Typical Antenna Gain / Axial Ratio

This is simulated using CST Microwaves Studio 2019 with results cross checked against known measurements.

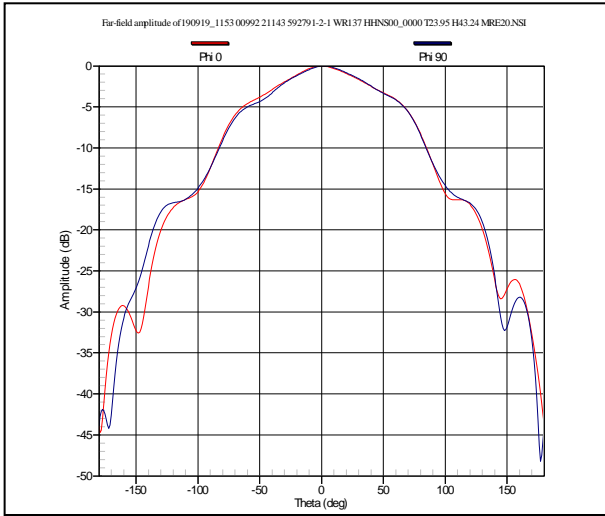


Typical Beamwidth

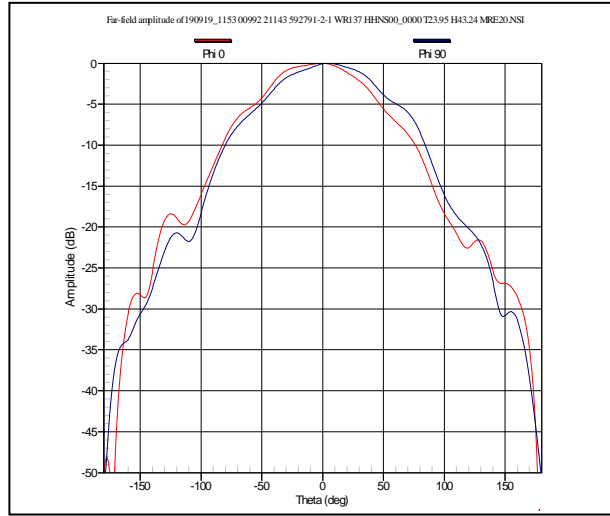


Typical Radiation Patterns

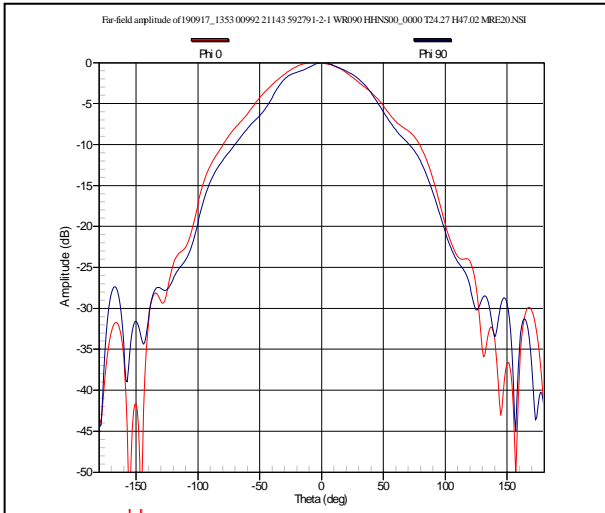
6 GHz



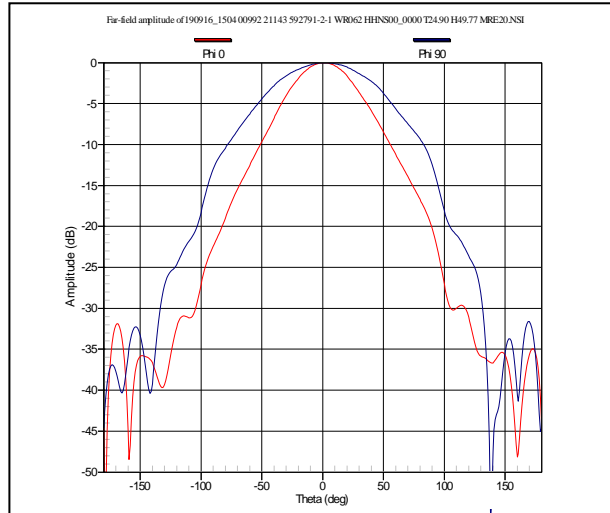
8 GHz



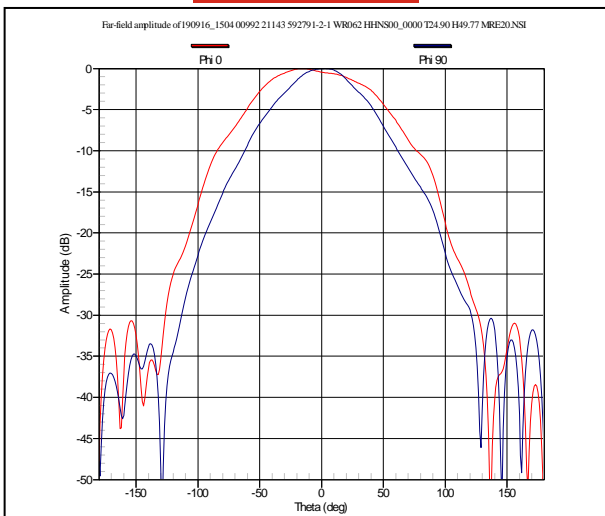
12 GHz



14 GHz



16 GHz



18 GHz

