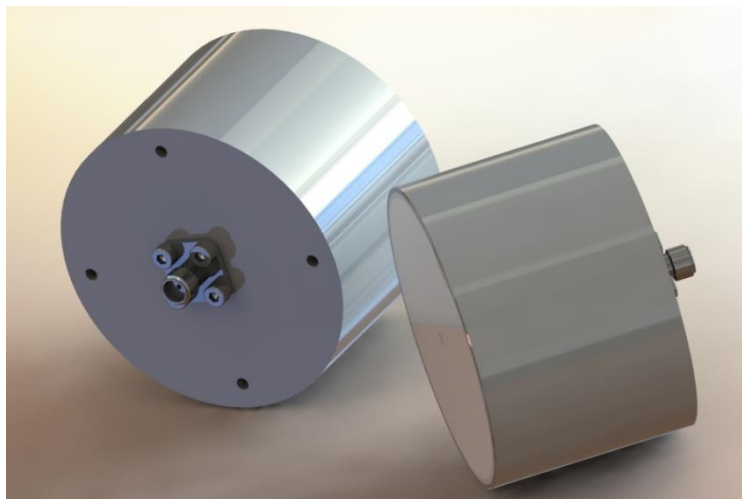


# 2 - 6 GHz Right Hand Circularly Polarised Spiral Antenna fitted with an SMA type Connector and Radome

Catalogue number **QSP-RC-2-6-S-R**

Steatite reference **QMS-00991**

Contents **Summary**  
**Typical Gain / Axial Ratio**  
**Typical Beamwidth**



QQD06-2 V7.3

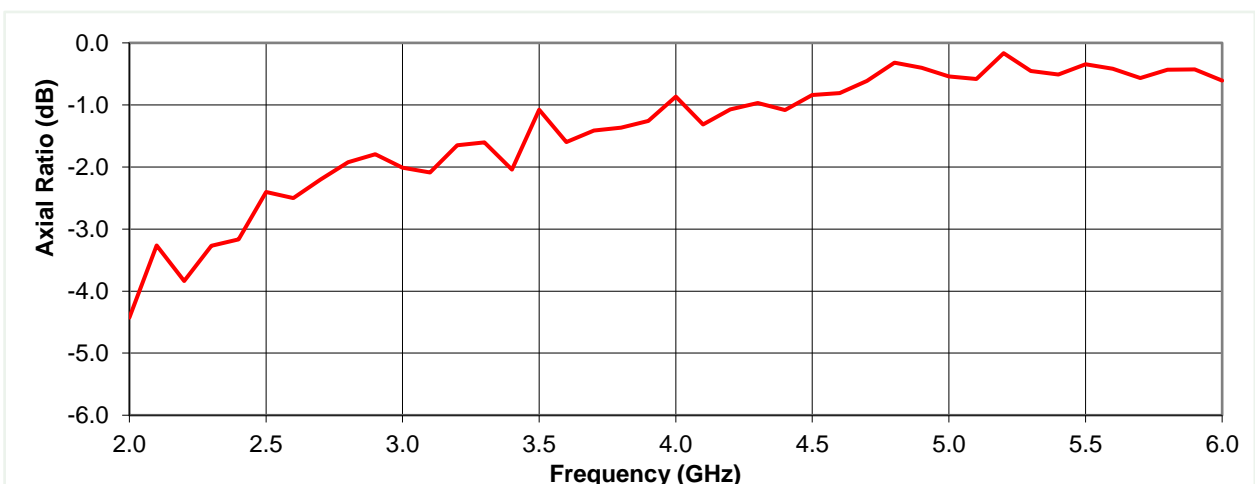
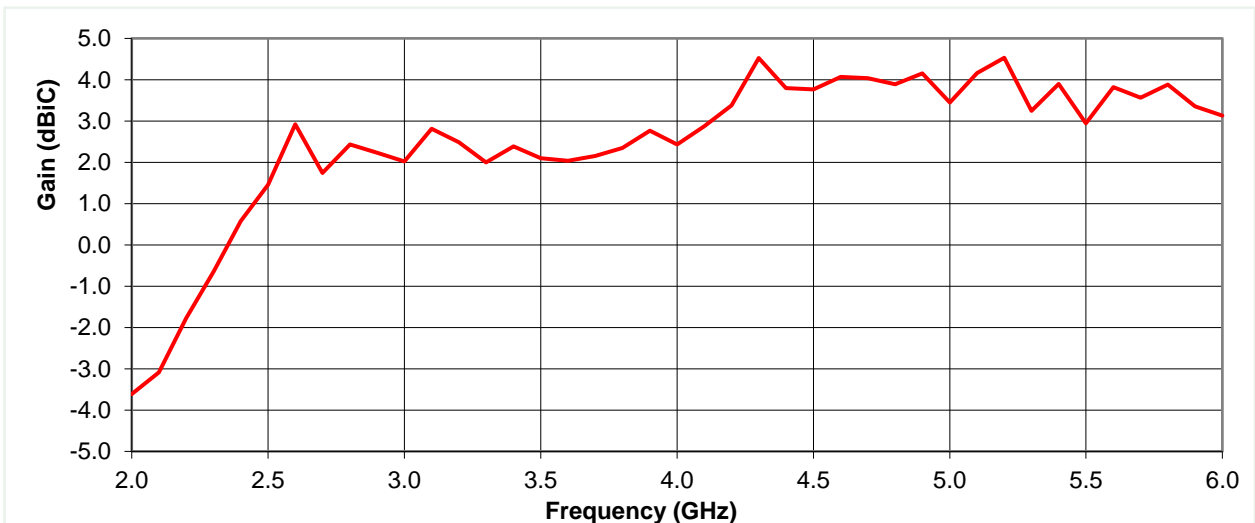
PDM 16/03/2020 8416

## Typical Specification

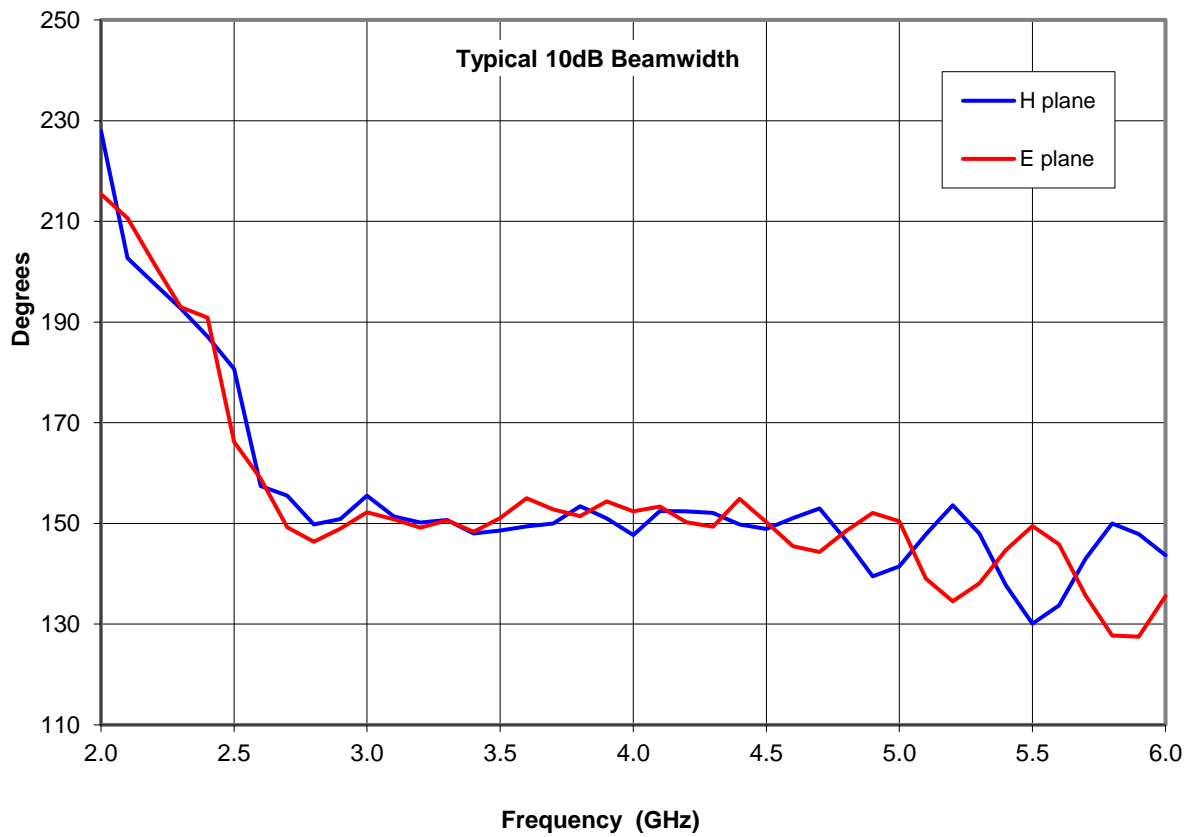
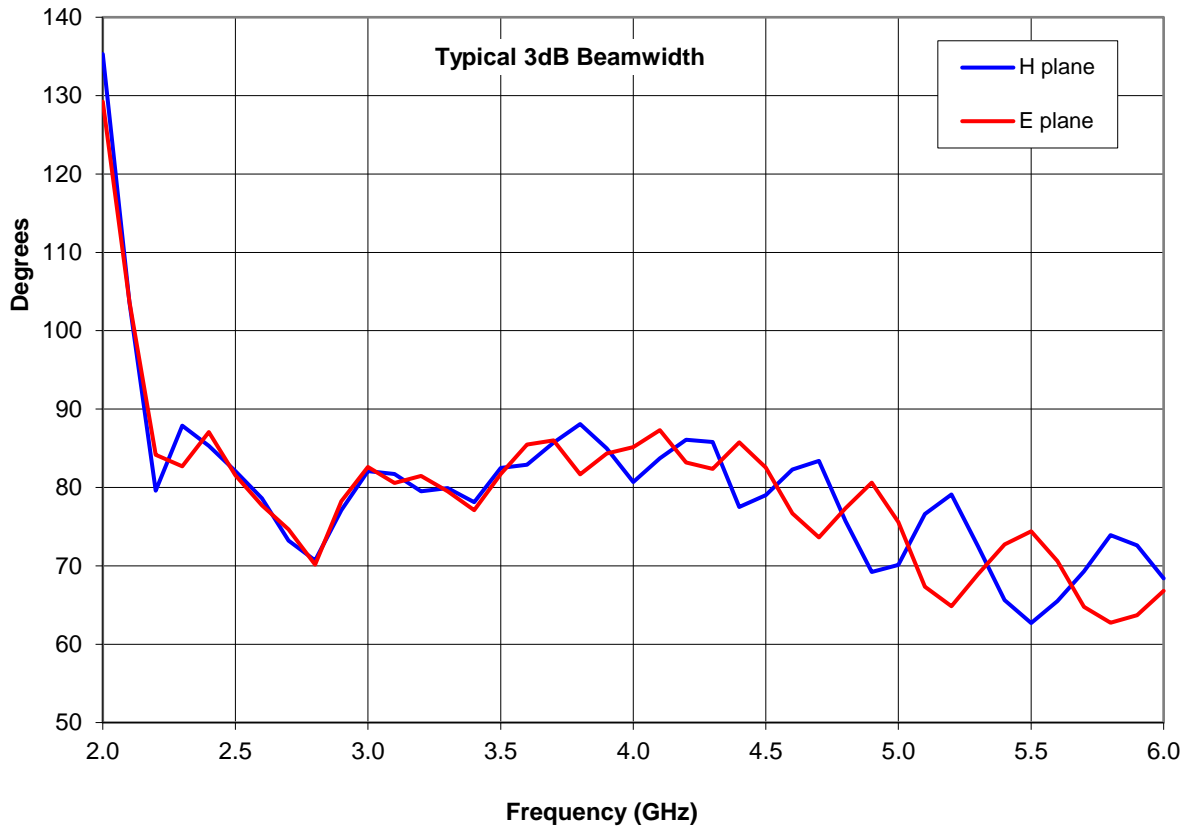
<b>Frequency</b>	2 to 6 GHz
<b>Connector Type</b>	SMA Female
<b>Power Handling</b>	2W CW
<b>VSWR</b>	Typically <2:1
<b>Gain</b>	-3.6 to 4.5 dBi
<b>Antenna Factor</b>	35.6 to 43.2 dB/m
<b>3dB Beamwidth</b>	63 to 135 degrees
<b>10dB Beamwidth</b>	128 to 228 degrees
<b>Weight</b>	200g nominal
<b>Maximum Size</b>	60mm Diameter by 40.5mm Length (excluding connector)
<b>Mounting</b>	3 threaded M3 holes (rear mounted) on a Ø38.1 PCD
<b>Construction</b>	Aluminium housing and PTFE front face.

## Typical Antenna Gain / Axial Ratio

This is calculated by reference to standard gain horn antennas, and cross checked with reference to the antenna beamwidth, with an estimated error of +/- 0.8dB.

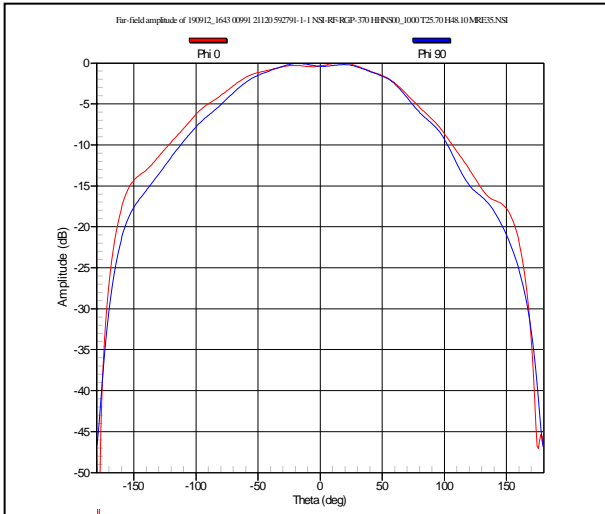


## Typical Beamwidth

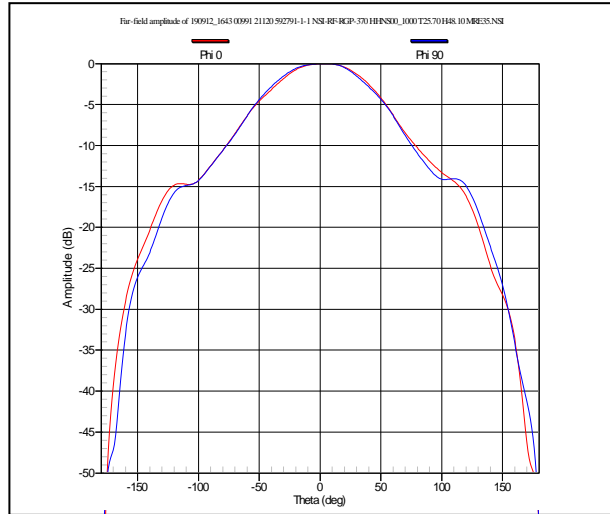


# Typical Radiation Patterns

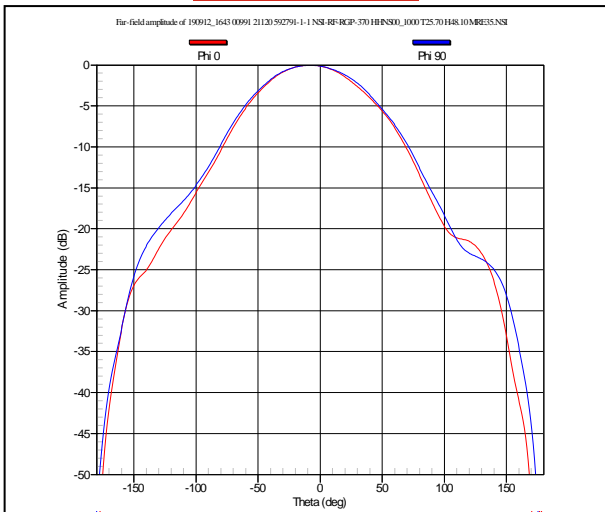
2 GHz



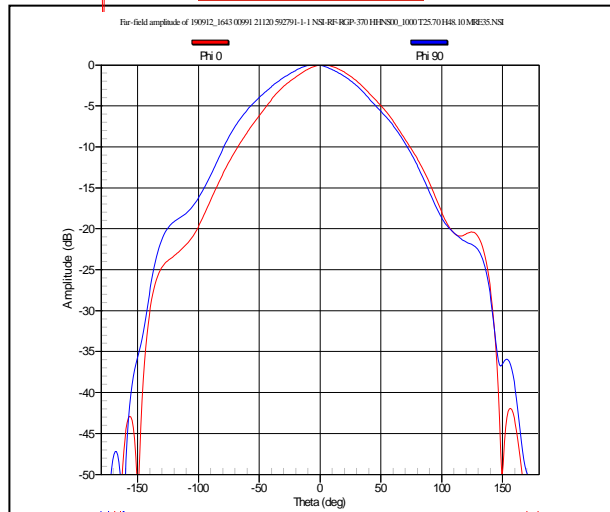
3 GHz



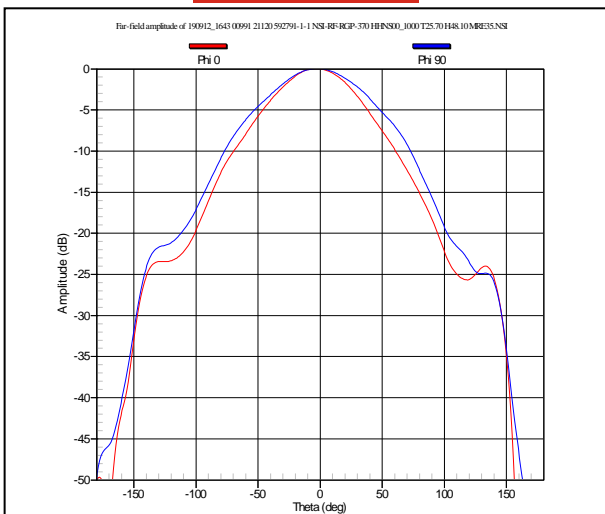
4 GHz



5 GHz



5.5 GHz



6 GHz

