



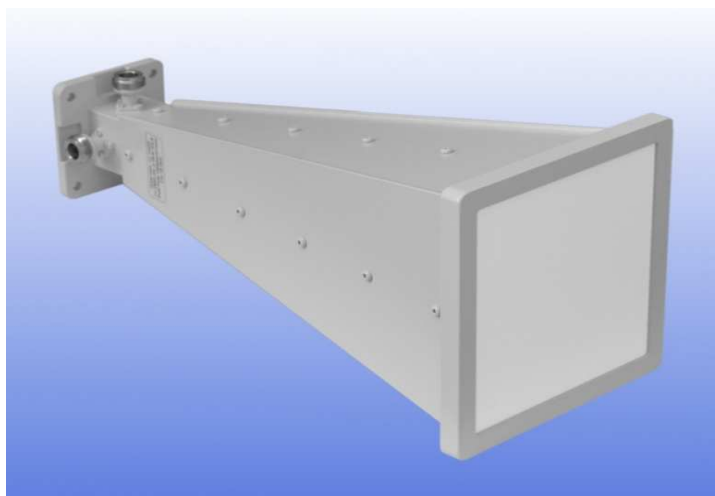
## **Wide Band Dual Polar Horn**

### **2 to 18 GHz**

Catalogue number: **QWH-DL-2-18-N-SG-R**

Q-par reference: **QMS-00474**

Contents: **Summary**  
**Typical Antenna Gain / Factor**  
**Typical Beamwidth / Patterns**  
**VSWR**  
**Isolation** (*between connectors*)

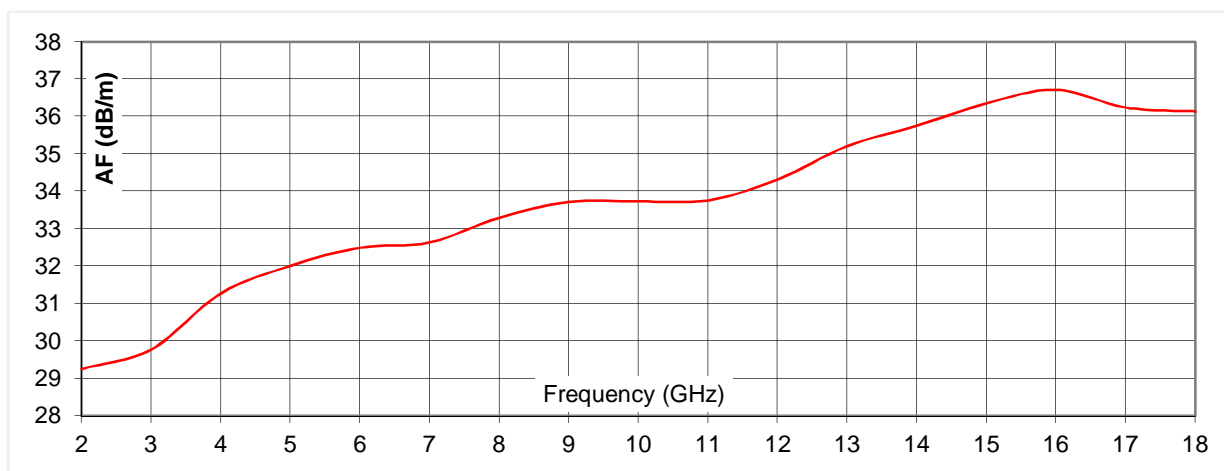
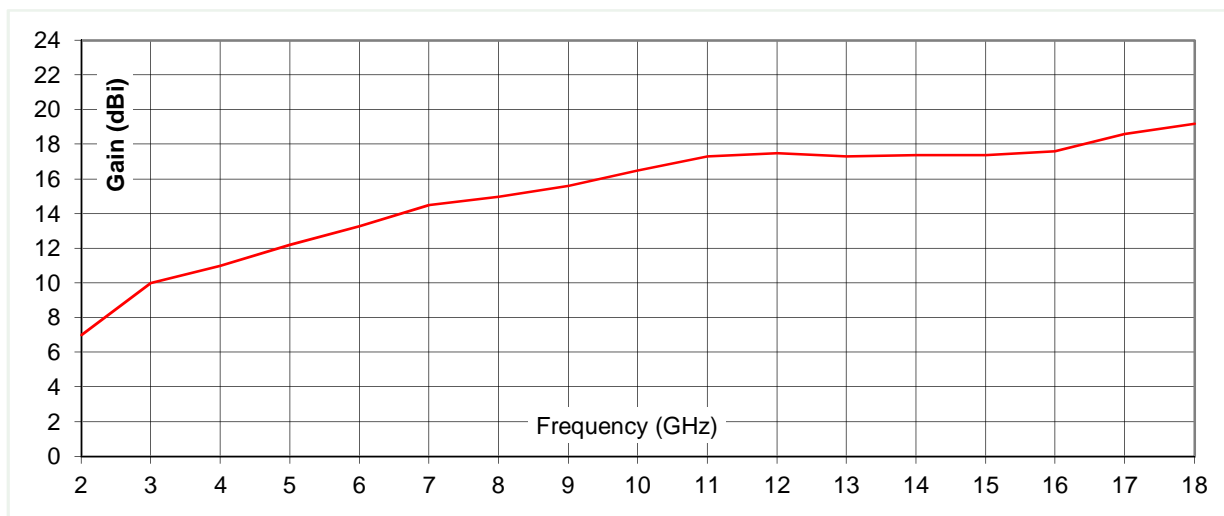


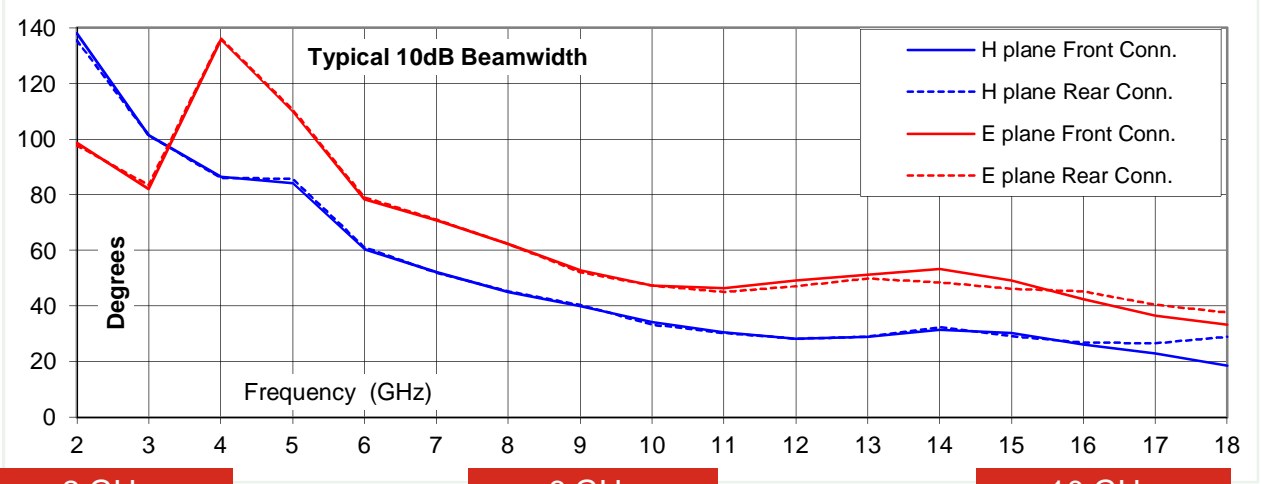
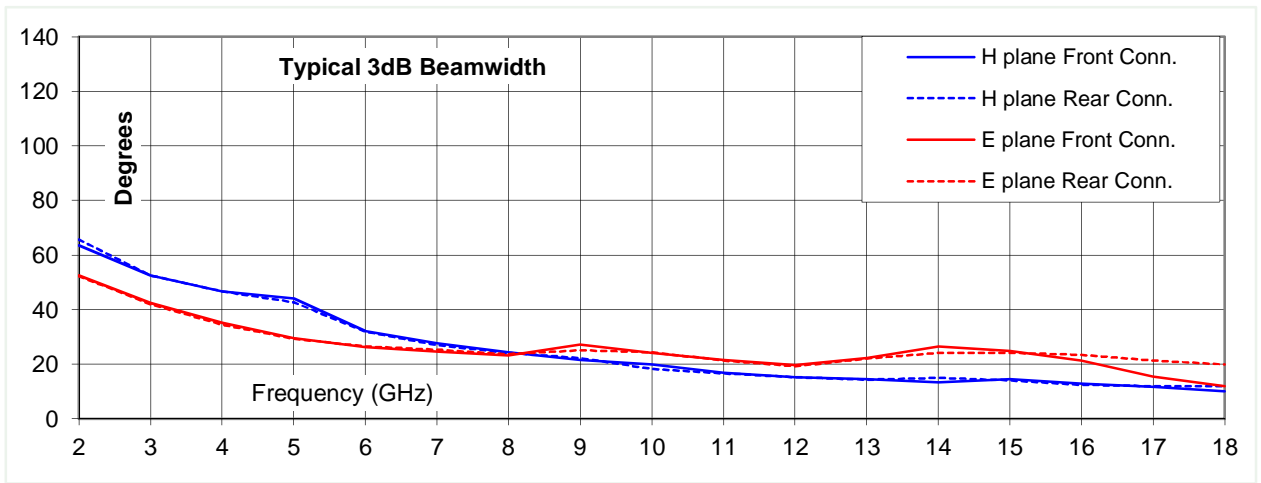
## Typical Specification

<b>Frequency</b>	2 to 18 GHz
<b>Connector type</b>	2 x N type jack
<b>Power Handling</b>	40 Watt c.w.
<b>VSWR</b>	Typically < 2.5:1
<b>Isolation</b>	Typically > 30 dB
<b>Gain</b>	7 to 19.2 dBi
<b>Antenna Factor</b>	29 to 37 dB/m
<b>3dB Beamwidth</b>	10 to 67 degrees
<b>10dB Beamwidth</b>	18 to 138 degrees
<b>Weight</b>	938 g nominal
<b>Size- max.</b>	130 mm x 130 mm external aperture x 293 mm long
<b>Mounting</b>	Mounting Plate 64 mm x 64 mm with 4 holes, diameter 5 mm, 50 mm centres
<b>Construction</b>	Composite aluminium and plastic, painted.

## Typical Antenna Gain / Factor

This is calculated by reference to standard gain horn antennas, and cross checked with reference to the antenna beamwidth, with an estimated error of +/- 0.8dB.

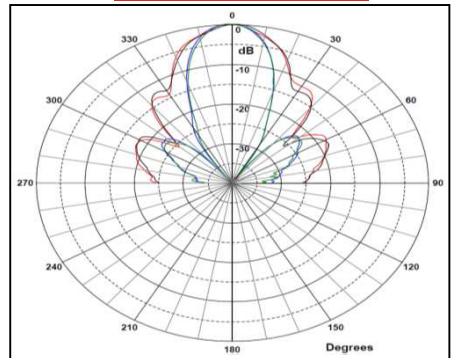
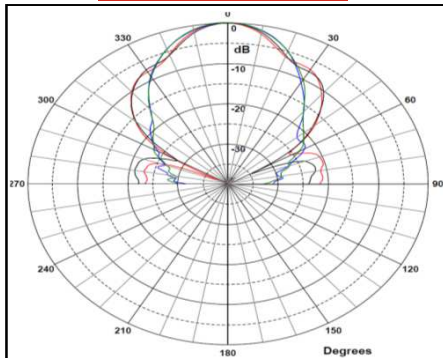
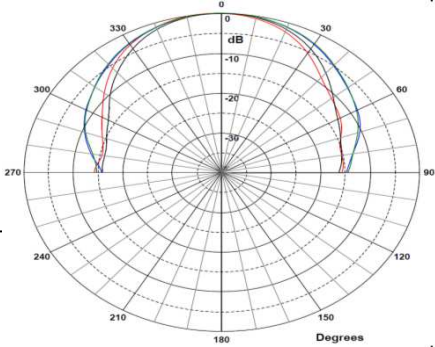




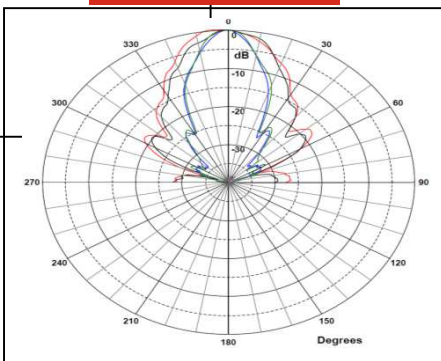
**2 GHz**

**6 GHz**

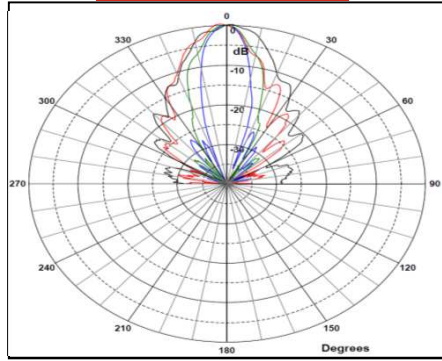
**10 GHz**



**14 GHz**



**18 GHz**



Red & Black = E plane cut, Blue & Green = H plane cut

