

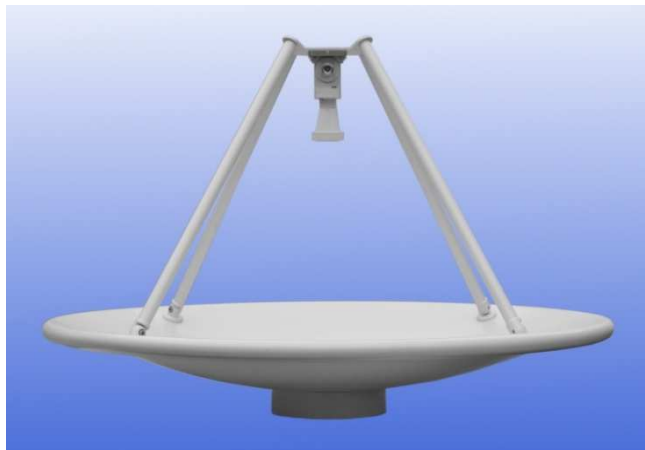


0.7 m Aluminium Reflector & 6.5 - 18 GHz Wideband Reflector Feed fitted with an N type Connector and a Radome

Catalogue number **QSR-700-A-337 & QWF-SL-6.5-18-N-R**

Q-par reference **QMS-00621**

Contents **Summary**
Typical Gain / Antenna Factor
Typical Beamwidth / Patterns
VSWR

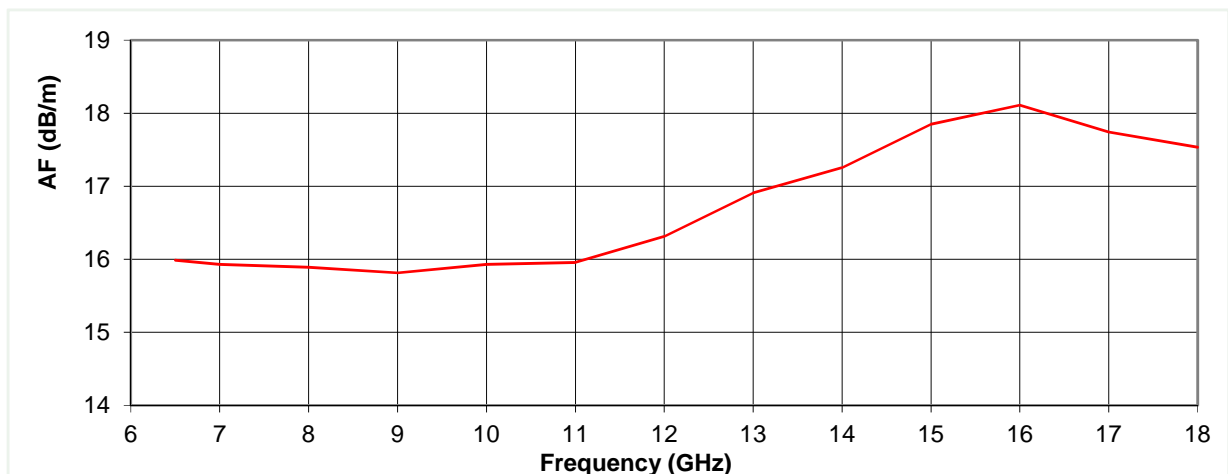
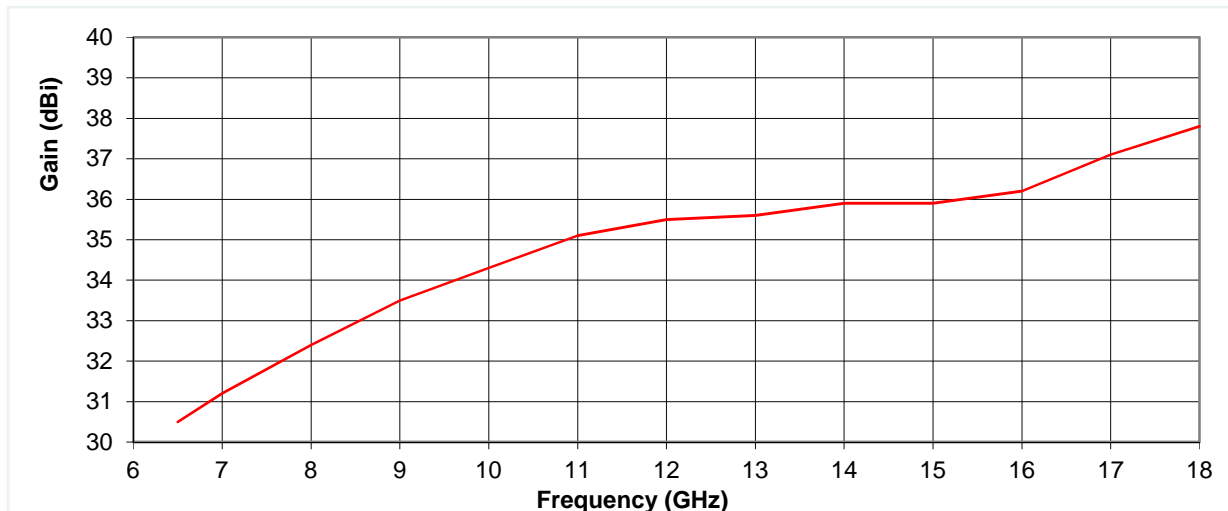


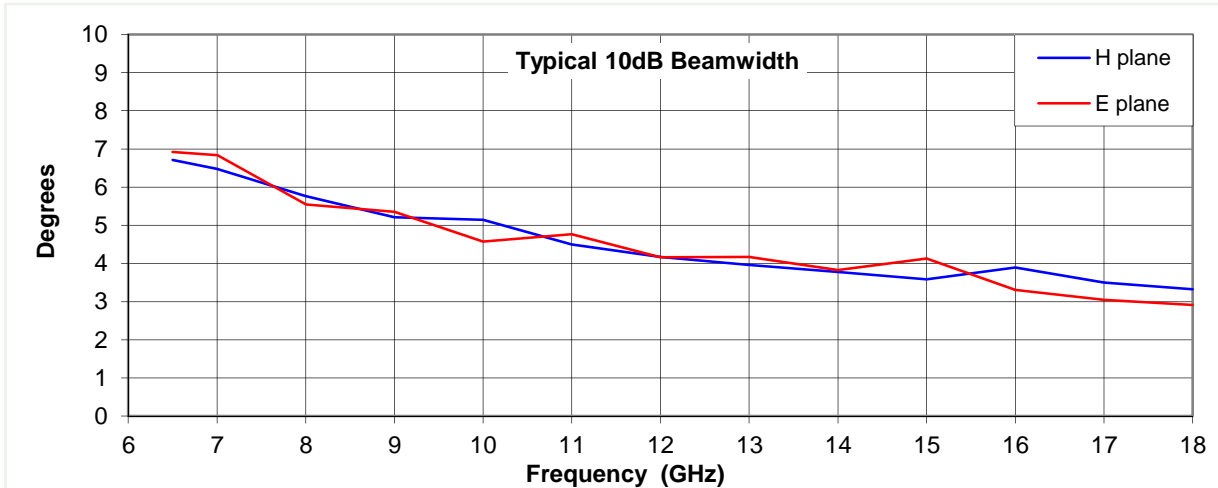
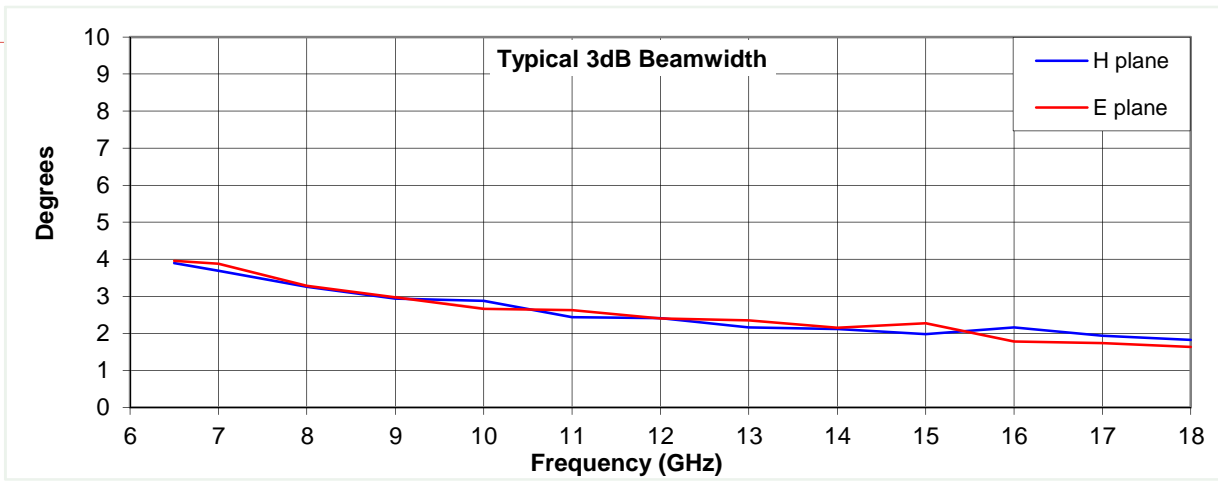
Typical Specification

Frequency	6.5 to 18 GHz
Connector Type	N type jack
Power Handling	400 Watt c.w.
VSWR	typically <2.0:1
Gain	30.5 to 37.8 dBi
Antenna Factor	15.8 to 18.1 dB/m
3dB Beamwidth	2 to 4 degrees
10dB Beamwidth	3 to 7 degrees
Weight	5.8 kg nominal
Maximum Size	Diameter 740 mm
Reflector F/D	0.38
Mounting	8 holes, tapped M6, 125 mm pitch circle diameter
Construction	Aluminium reflector, powdercoat finish. Composite brass / copper / plastic feed, with aluminium transition, painted.

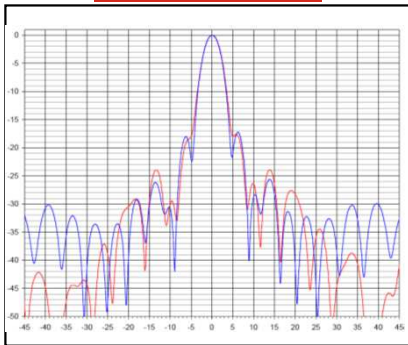
Typical Antenna Gain / Factor

This is calculated by reference to standard gain horn antennas, and cross checked with reference to the antenna beamwidth, with an estimated error of +/- 0.8dB.

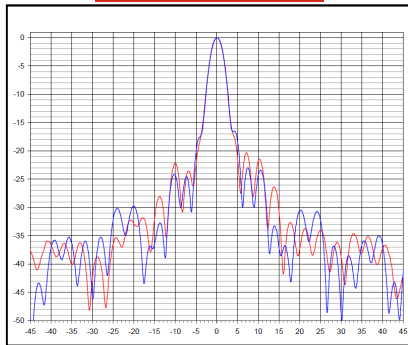




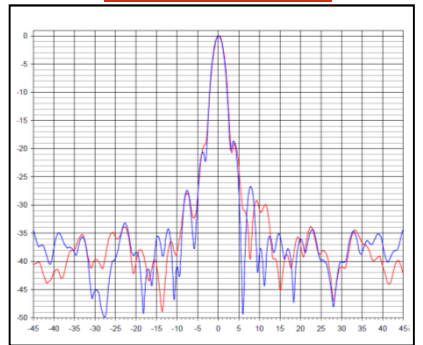
6.5 GHz



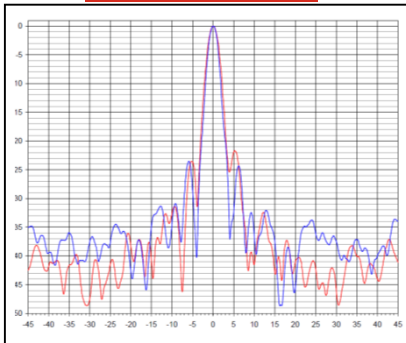
9 GHz



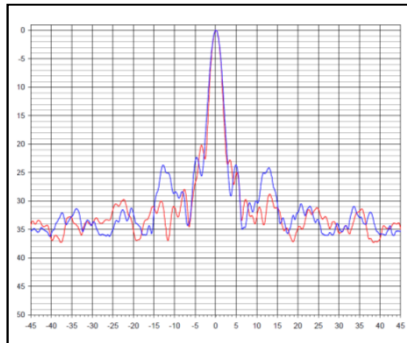
12 GHz



15 GHz



18 GHz



Red trace = E-plane, Blue trace = H-plane cut

