



1.2 m Reflector Antenna

7.5 to 18 GHz

Wideband Feed

Reflector catalogue number: **QSR-1200-A-457 & QWF-SL-7.5-18-N-R**

Q-par reference: **QMS-00393**

Contents: **Summary**
Typical Antenna Gain
Typical Beamwidth / Patterns
VSWR



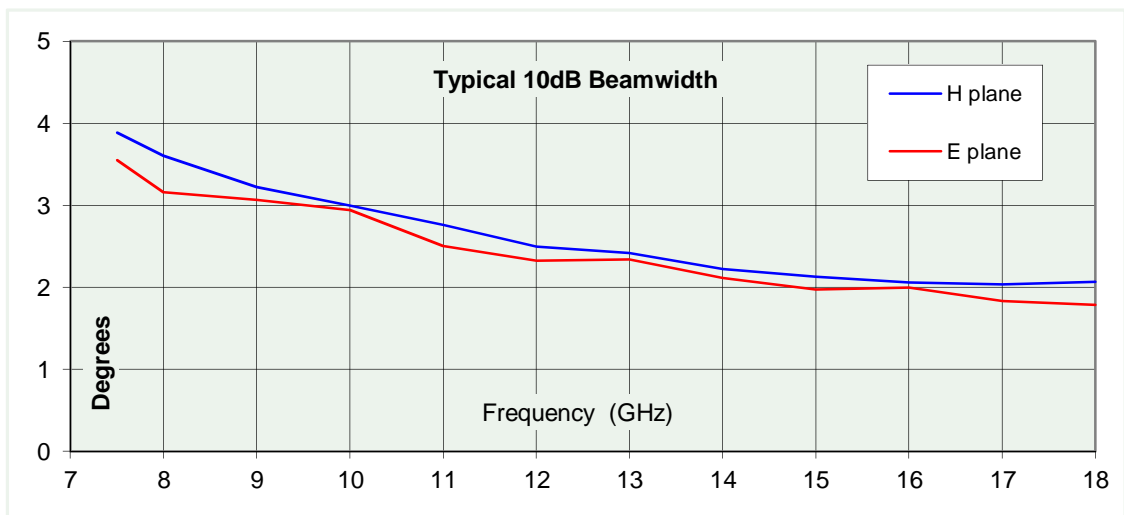
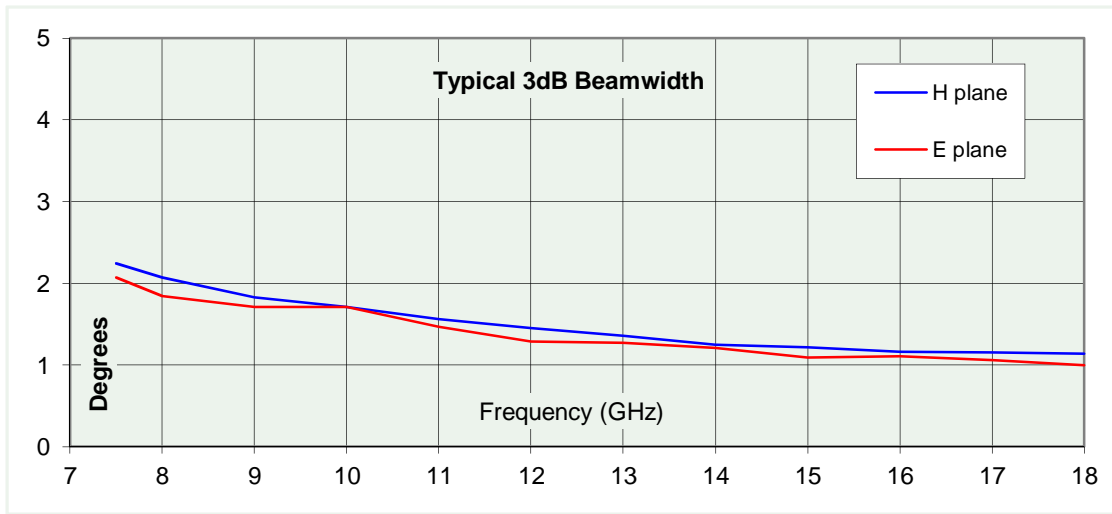
Typical Specification

Frequency	7.5 to 18 GHz	
Connector type	WRD750 Flange	
Power Handling	2 kWatt c.w.	
VSWR	Typically < 1.6:1	1.8:1 max.
Gain	37 to 44 dBi	
3dB Beamwidth	1 to 2.2 degrees	
10dB Beamwidth	1.8 to 3.9 degrees	
Weight	14 kg nominal	
Focal Length	457 mm	
F/D	0.38	
Size- max.	Reflector diameter 1230 mm max	
Mounting	8 holes, tapped M6, 125 mm p.c.d.	
Construction	Spun aluminium reflector, powdercoat finish. Gold plated copper feed, copper waveguide, painted.	

Typical Antenna Gain

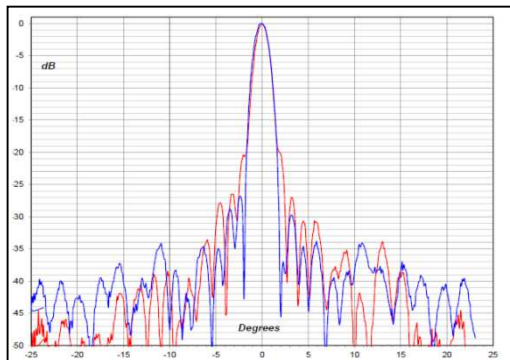
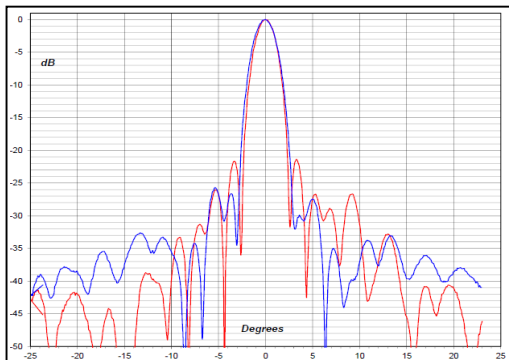
This is calculated by reference to standard gain horn antennas, and cross checked with reference to the antenna beamwidth, with an estimated error of +/- 0.8dB.



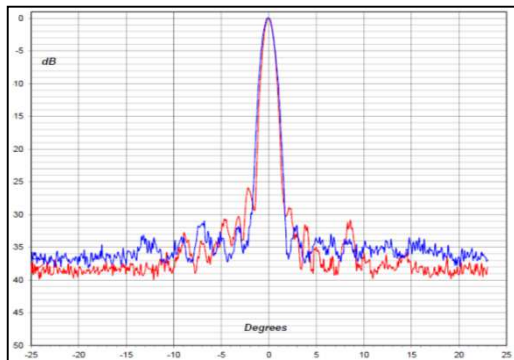


7.5 GHz

12 GHz



18 GHz



Red trace = E-plane, Blue trace = H-plane cut

