



1.2 m Aluminium Reflector & 2 - 8 GHz Wideband Feed fitted with an N type Connector and Radome

Catalogue number **QSR-1200-A-457 & QWF-SL-2-8-N-R**

Q-par reference **QMS-00264**

Contents **Summary**
Typical Gain / Antenna Factor
Typical Beamwidth / Patterns
VSWR

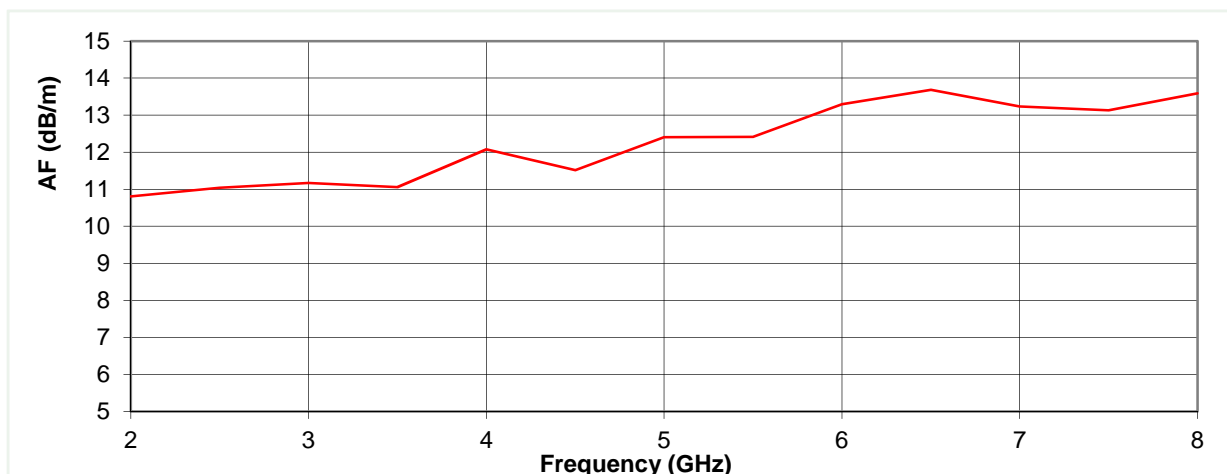
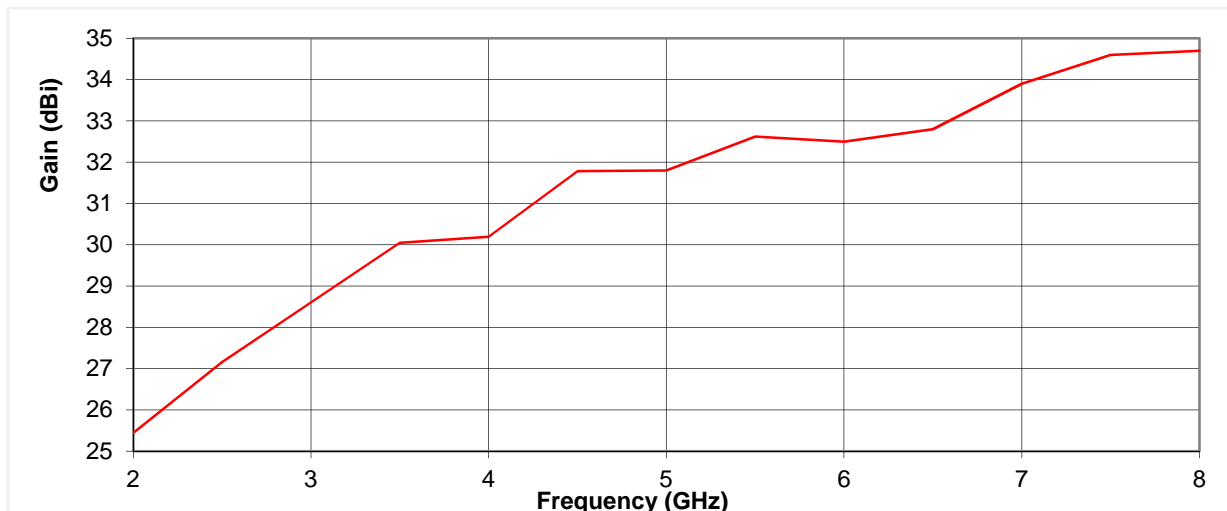


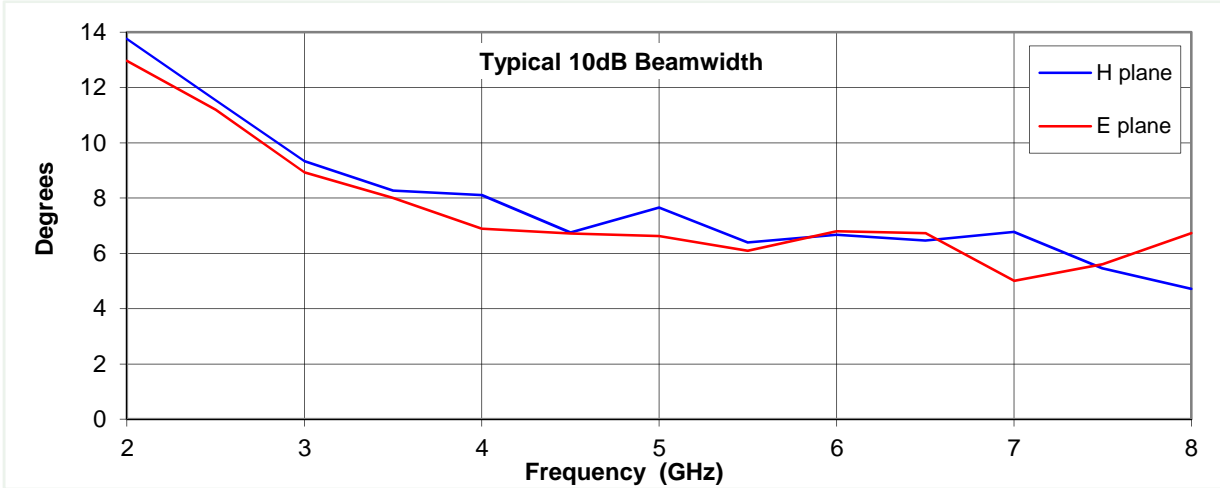
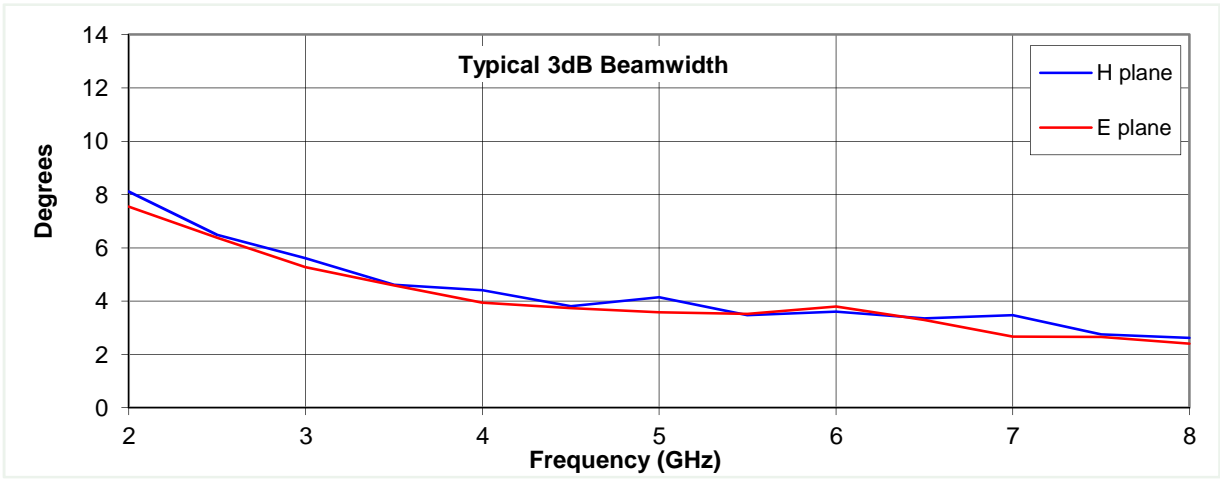
Typical Specification

Frequency	2 to 8 GHz
Connector type	N type jack
Power Handling	500 Watt c.w.
VSWR	< 2.3:1 Typically < 2.0:1
Gain	25.5 to 34.7 dBi
Antenna Factor	10.8 to 13.7 dB/m
3dB Beamwidth	2 to 8 degrees
10dB Beamwidth	5 to 14 degrees
Weight	13.7 kg nominal
Maximum size	Reflector diameter 1230 mm
Mounting	8 holes, tapped M6, 125 mm pitch circle diameter
Construction	Aluminium reflector, painted. Brass/ copper plastic composite feed, painted

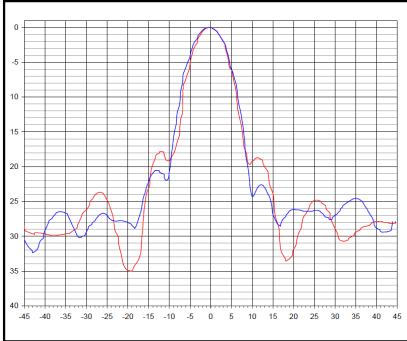
Typical Antenna Gain / Factor

This is calculated by reference to standard gain horn antennas, and cross checked with reference to the antenna beamwidth, with an estimated error of +/- 0.8dB.

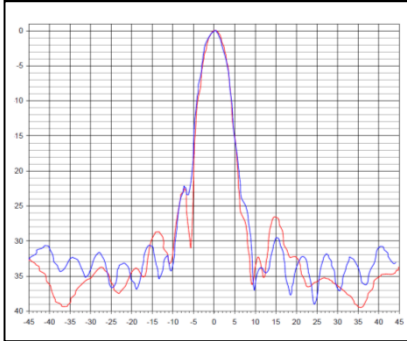




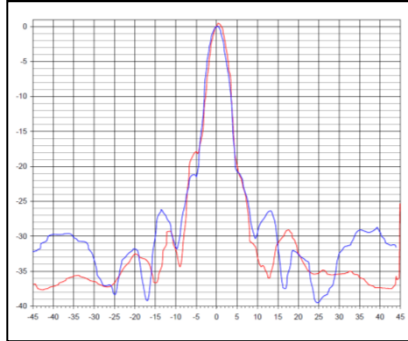
2 GHz



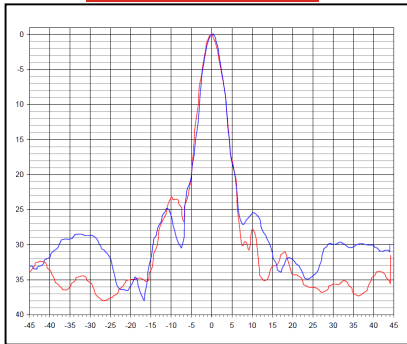
3.5 GHz



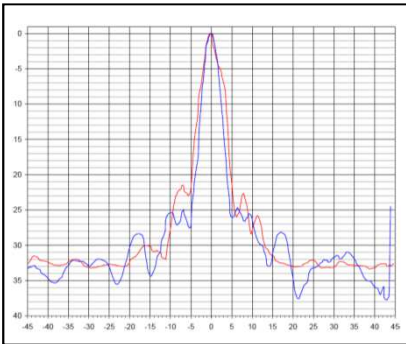
5 GHz



6.5 GHz



8 GHz



Red trace = E-plane, Blue trace = H-plane cut

