



# Dual Linearly Polarised Sinuous Antenna

## 2 to 18 GHz

Catalogue number: **QSI-DL-2-18-S-SG**

Q-par reference: **QMS-00015**

Contents: **Summary**  
**Typical Antenna Gain**  
**Typical Beamwidth / Patterns**  
**VSWR**  
**Isolation**

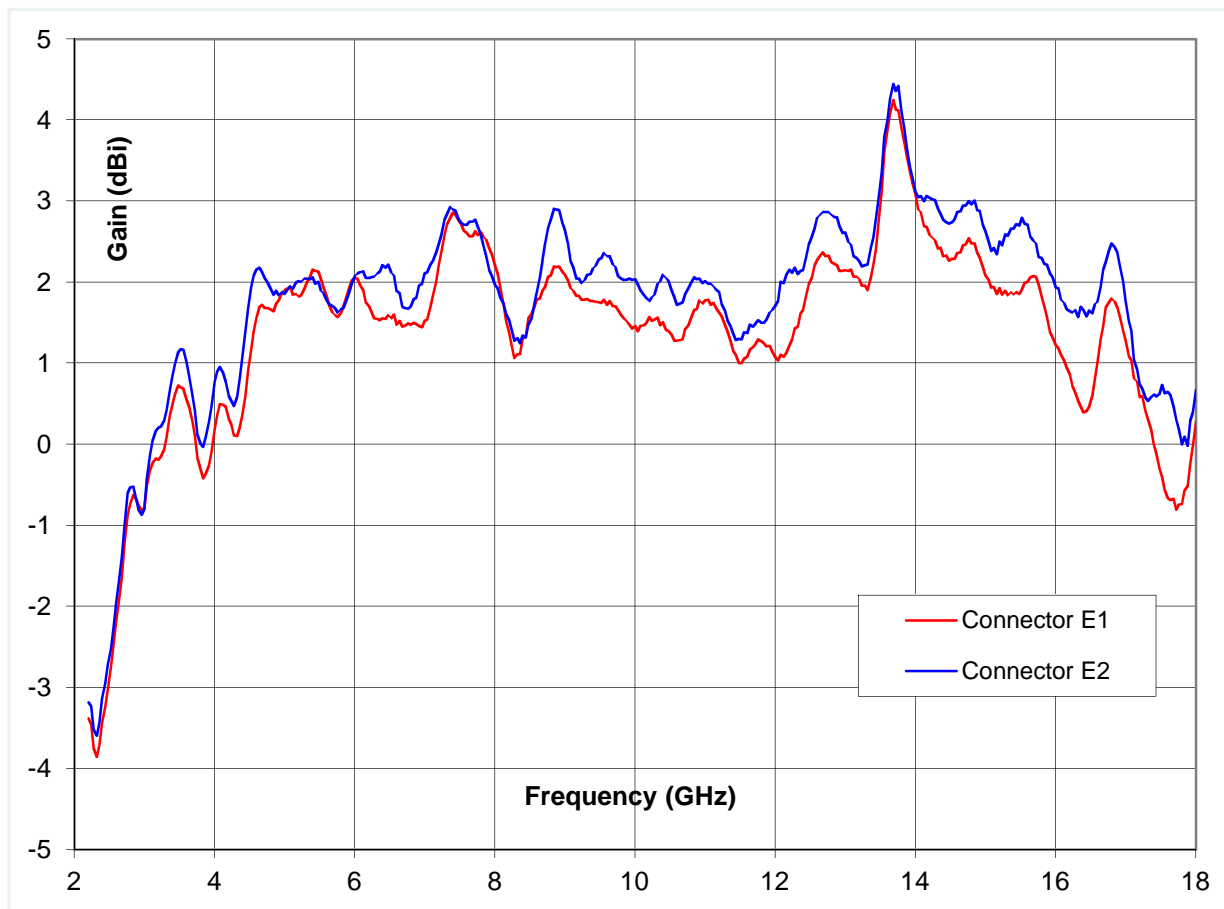


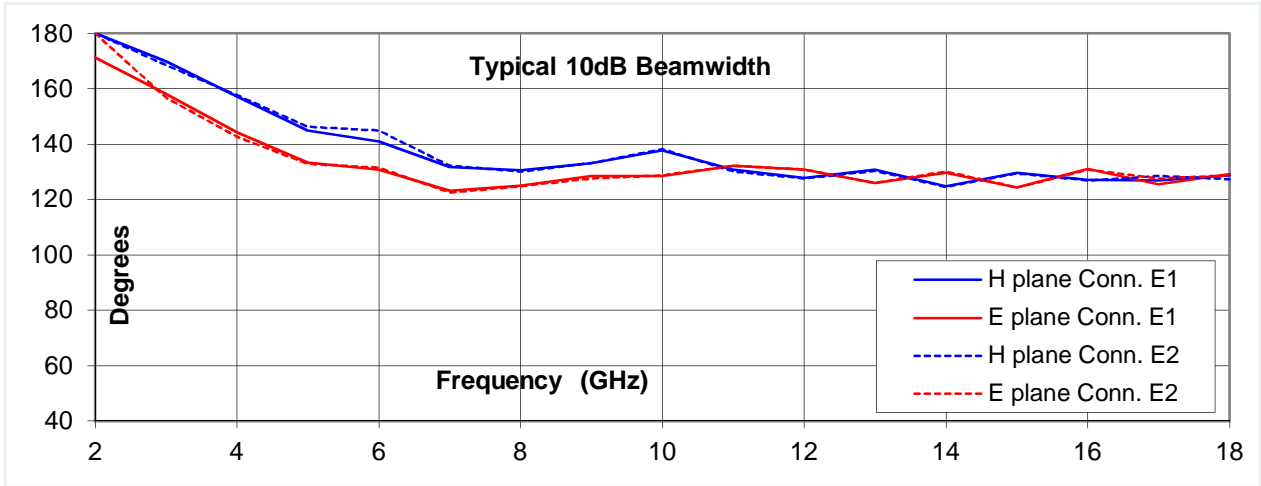
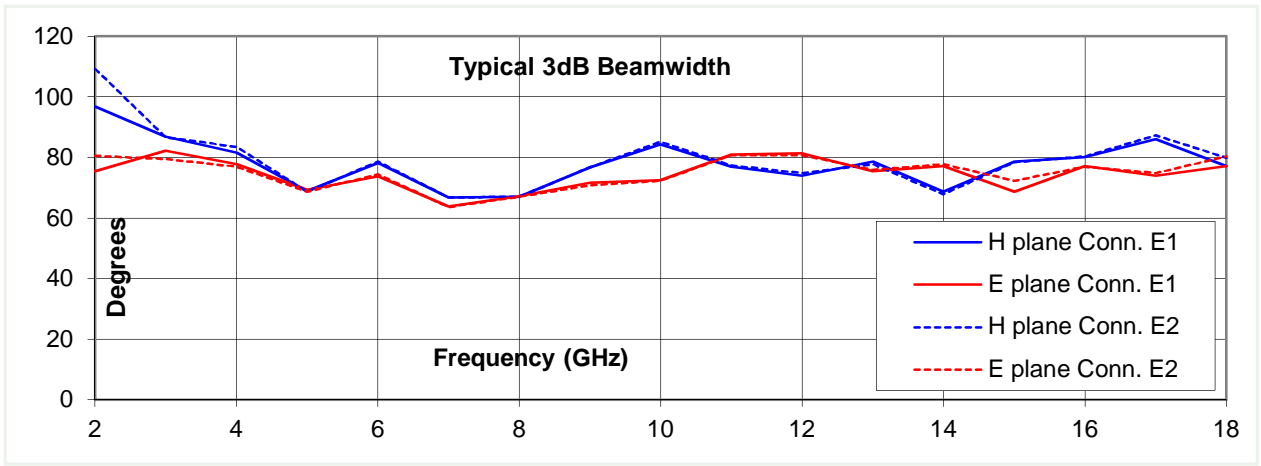
## Typical Specification

<b>Frequency</b>	2 to 18 GHz
<b>Connector type</b>	2 x SMA type jack
<b>Power handling</b>	1 Watt c.w.
<b>VSWR</b>	Typically < 3.2:1
<b>Gain</b>	-3.8 to 4.4 dBi
<b>Polarisation wander</b>	Typically within +/- 10 degrees
<b>3dB Beamwidth</b>	64 to 109 degrees
<b>Isolation</b>	> 25 dB between connectors, typically > 32 dB
<b>Weight</b>	260 g
<b>Size</b>	60 mm aperture x 82 mm long (incl. Connectors)
<b>Mounting</b>	81 mm diameter flange with 8 holes, diameter 3.3 mm on 75 mm p.c.d.
<b>Construction</b>	Aluminium and Engineering Plastics, painted

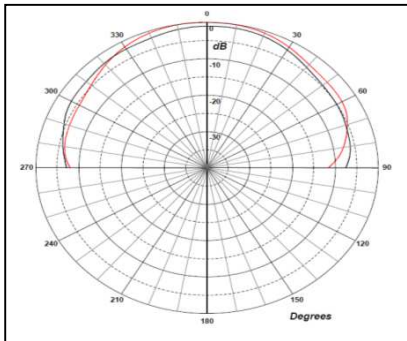
## Typical Antenna Gain

Gain is calculated by reference to standard gain horn antennas, and cross checked with reference to the antenna beamwidth, with an estimated error of +/- 0.8dB.

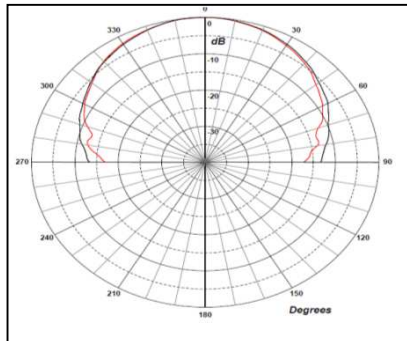




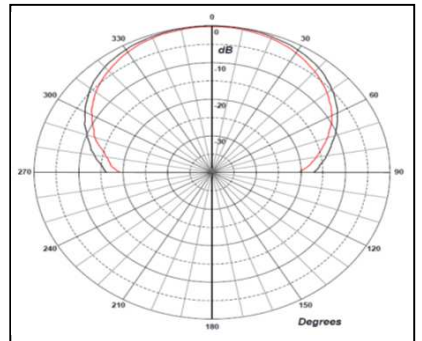
2 GHz



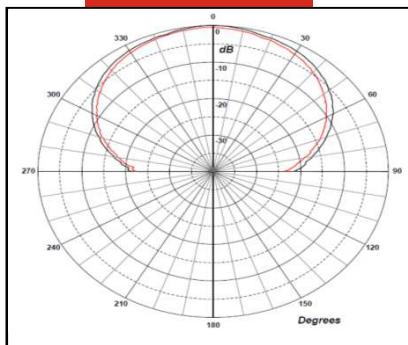
5 GHz



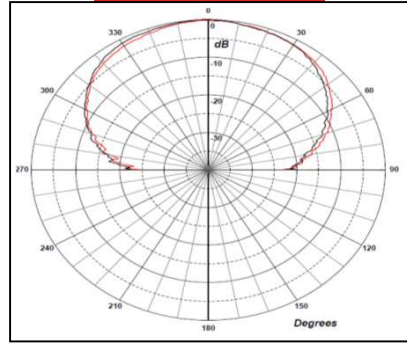
10 GHz



15 GHz



18 GHz



Note: **Red trace = E-plane**, **Black trace = H-plane**

