

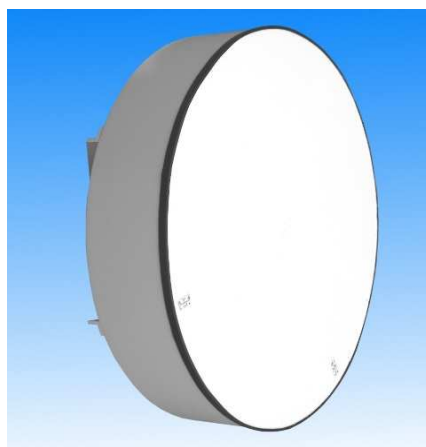


0.2 - 2 GHz Dual Linearly Polarised Sinuous Antenna fitted with N type Connectors

Catalogue number **QSI-DL-0.2-2-N-SG**

Q-par reference **QMS-00035**

Contents **Summary**
Typical Gain / Antenna Factor
Typical Beamwidth / Patterns
VSWR
Isolation between ports



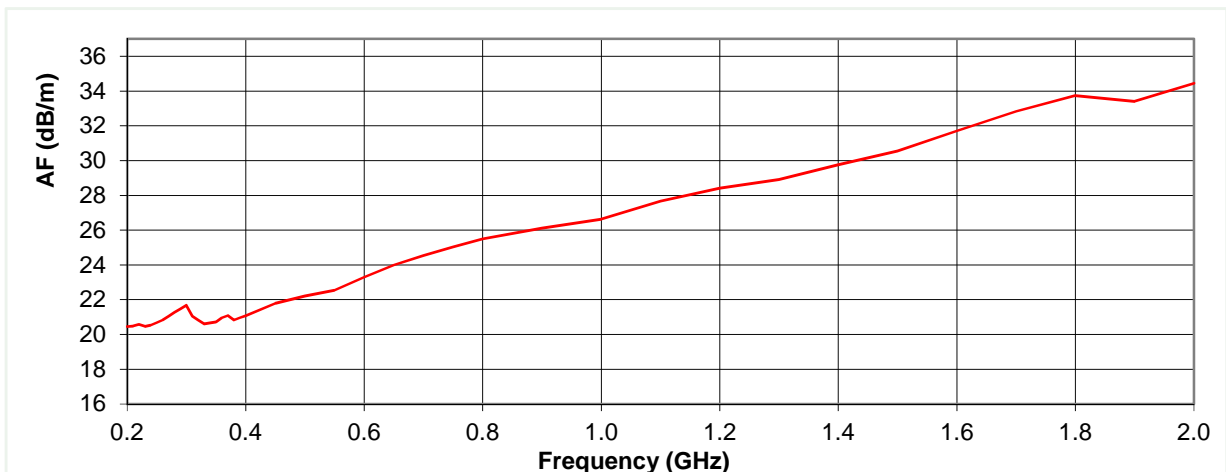
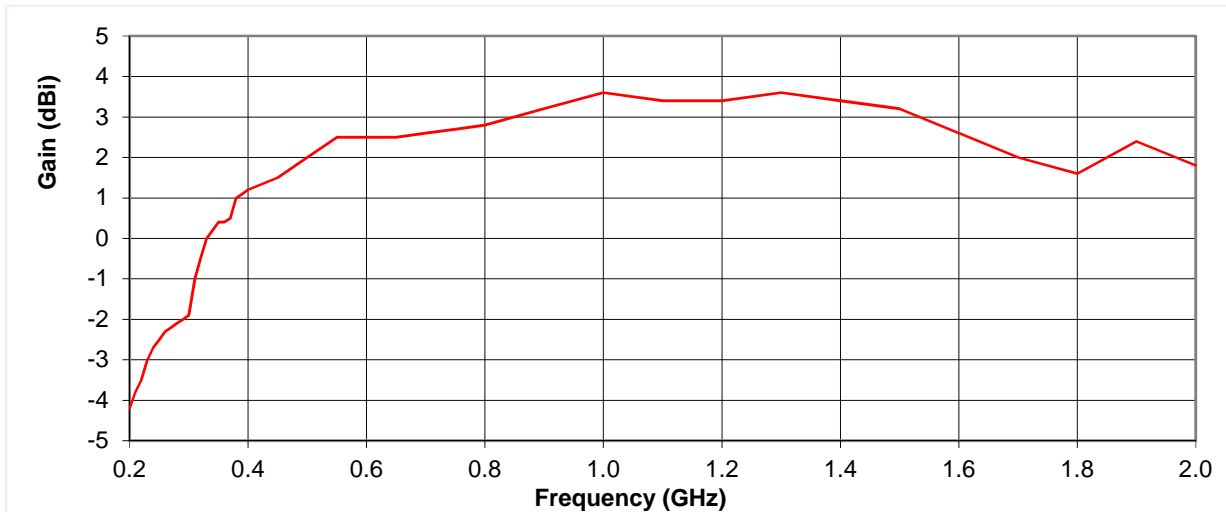
Typical photograph. Finish according to customer specifications.

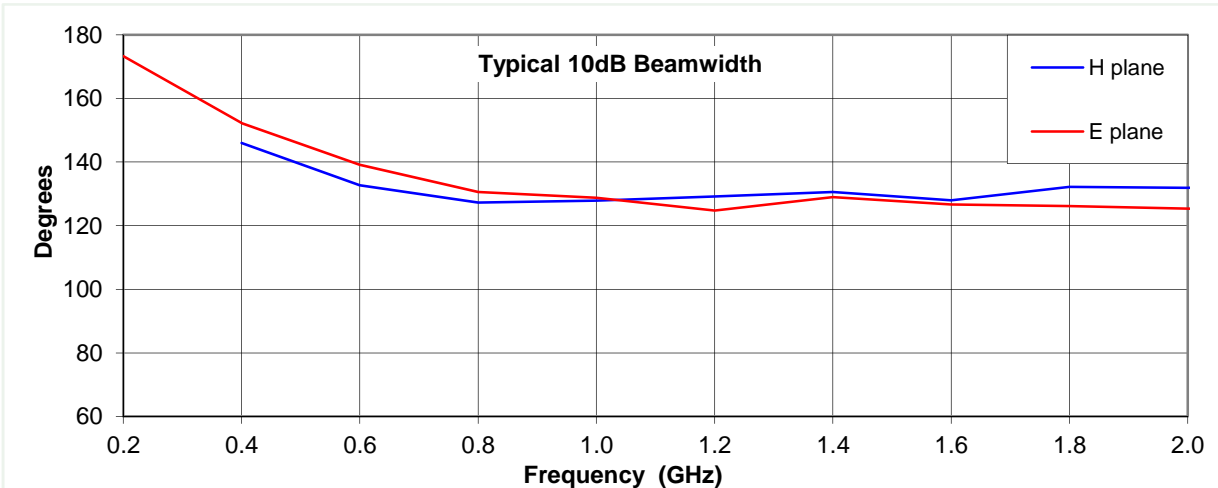
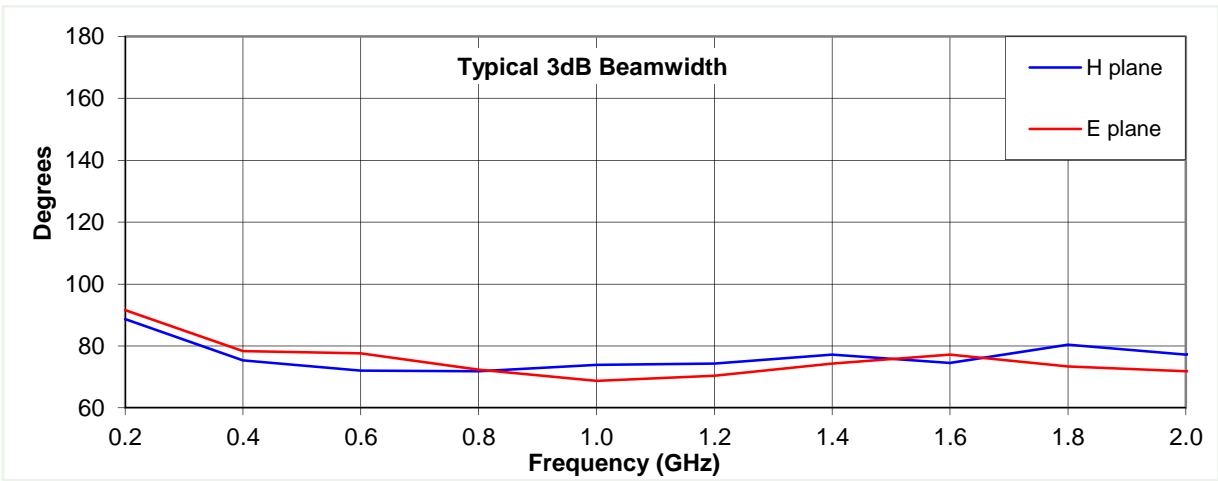
Typical Specification

Frequency	0.2 to 2 GHz
Connector Type	2 x N type jack
Power Handling	10 Watt c.w.
VSWR	4.2:1 maximum. Typically <2.4:1 over 90% band.
Gain	-4.2 to 3.6 dBi
Antenna Factor	20.5 to 34.5 dB/m
Isolation	>35 dB between ports
3dB Beamwidth	69 to 92 degrees
10dB Beamwidth	125 to 173 degrees
Weight	13.8 kg (31.2 lbs)
Maximum Size	Diameter 716 mm (28.2") x 350 mm deep (13.8"), including connectors
Construction	Aluminium and Engineering Plastics
Mounting	Circular mount & connector plate, having 8 holes, diameter 8.1 mm, 290 mm (11.417") pitch circle diameter

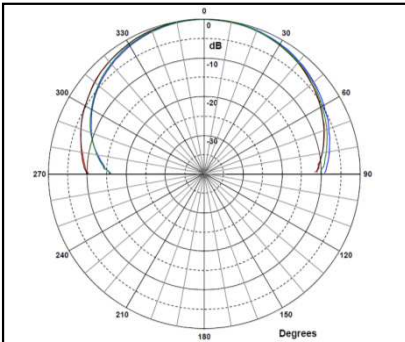
Typical Antenna Gain / Factor

This is calculated by reference to standard gain horn antennas, and cross checked with reference to the antenna beamwidth, with an estimated error of +/- 0.8dB.

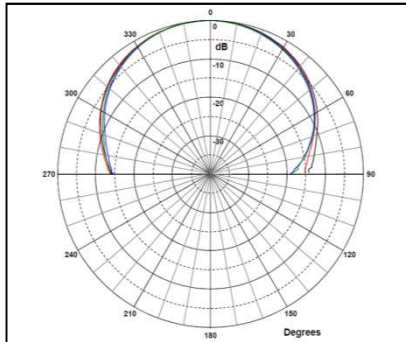




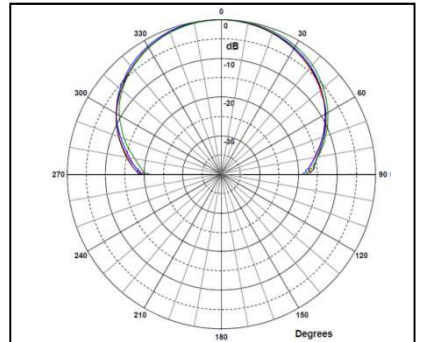
0.2 GHz



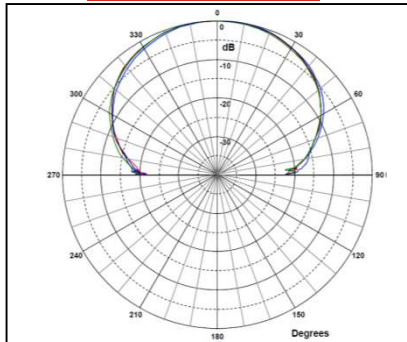
0.6 GHz



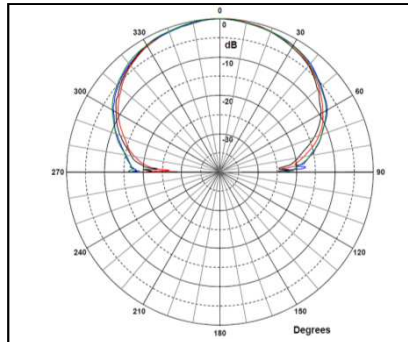
1.0 GHz



1.6 GHz



2.0 GHz



Red & Black trace = E-plane, Blue & Green trace = H-plane cut

