



# Standard Gain Horn Antenna

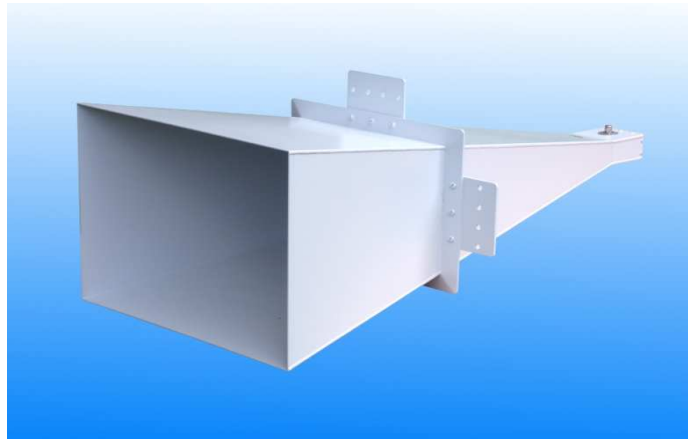
1.7 to 2.6 GHz

**WG8 WR430**

Catalogue number: **QSH-SL-1.7-2.6-A-20**

Q-par reference: **QMS-00342**

Contents: **Summary Antenna Gain  
Beamwidth VSWR**

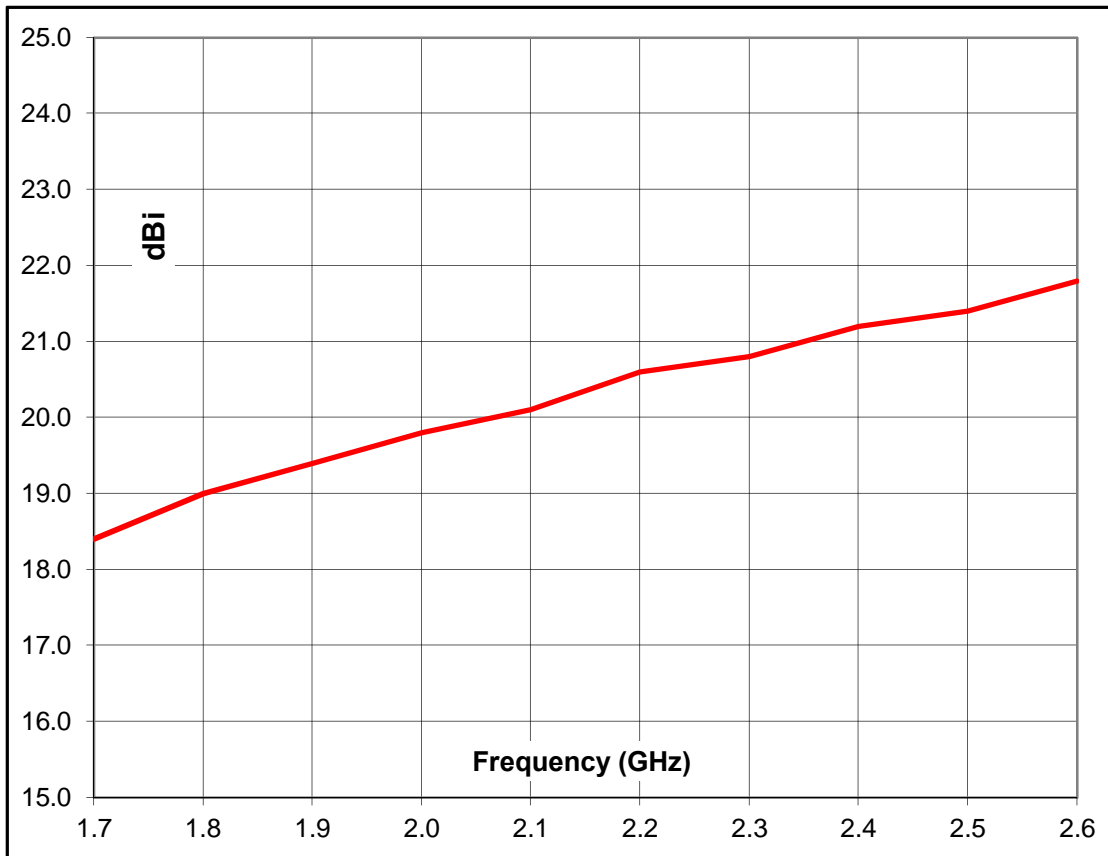


## Summary

Frequency	1.7 to 2.6 GHz
Connector type	N type jack
VSWR	<1.3:1
Gain	18.4 to 21.8 dBi
Power handling	300 Watts c.w.
Weight	11kg - nominal
Size- max.	575 mm x 410 mm external aperture x 1200 mm long
Mounting	Mounting Plates fitted at C of G on 2 sides each with 4 holes, diameter 10 mm, 40 mm centres

## Typical Antenna Gain

This is calculated by reference to standard gain horn antennas, and cross checked with reference to the antenna beamwidth, with an estimated error of +/- 0.8dB.



The recommended far field range for this antenna is > 5.6 Metres

Frequency	Gain	Antenna Factor
GHz	dBi	dB/m
1.7	18.4	16.4
2.0	19.8	16.5
2.2	20.6	16.5
2.4	21.2	16.6
2.6	21.8	16.7

