

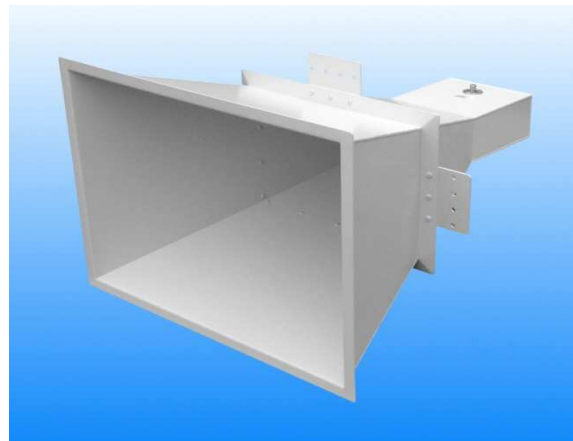


## 0.75 - 1.1 GHz Linearly Polarised 15 dBi Horn Antenna fitted with an N type Connector

Catalogue number **QSH-SL-0.7-1.1-N-15**

Q-par reference **QMS-00068**

Contents **Summary**  
**Typical Antenna Gain / Factor**  
**Typical Beamwidth**  
**VSWR**



Typical photograph. Finish according to customer specifications.

## Typical Specification

<b>Frequency</b>	0.75 to 1.1 GHz
<b>Connector type</b>	N type jack
<b>Power Handling</b>	400 Watt c.w.
<b>VSWR</b>	< 1.6 :1
<b>Gain</b>	13.6 to 17.1 dBi
<b>Antenna Factor</b>	14.1 to 14.4 dB/m
<b>3dB Beamwidth</b>	25 to 38 degrees
<b>10dB Beamwidth</b>	44 to 66 degrees
<b>Weight</b>	13.7 kg nominal
<b>Maximum size</b>	809 mm x 605 mm external aperture x 1050 mm long
<b>Mounting</b>	Mounting brackets fitted on two sides, at centre of gravity. Each having 4 holes, diameter 10 mm, 40 mm centres
<b>Construction</b>	Welded aluminium. Powdercoat finish

## Typical Antenna Gain / Factor

This is calculated by reference to standard gain horn antennas, and cross checked with reference to the antenna beamwidth, with an estimated error of +/- 0.8dB.

