



2 - 18 GHz Vertically Polarised Omnidirectional Antenna fitted with an SMA type Connector and Radome

Catalogue number: **QOM-SL-2-18-S-SG-R**

Q-par reference: **QMS-00019**

Contents: **Summary**
Typical Gain / Antenna Factor
Typical Beamwidth / Patterns
VSWR

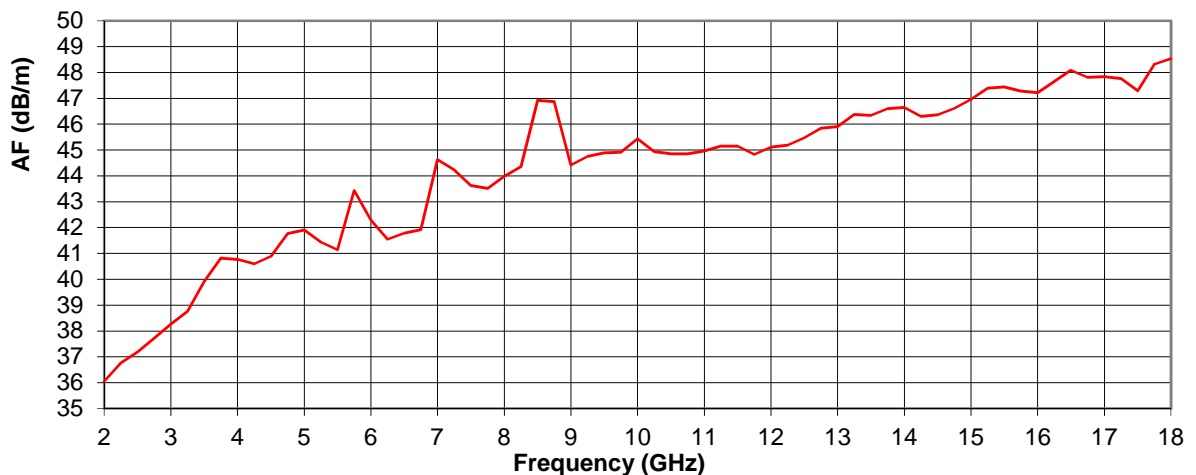
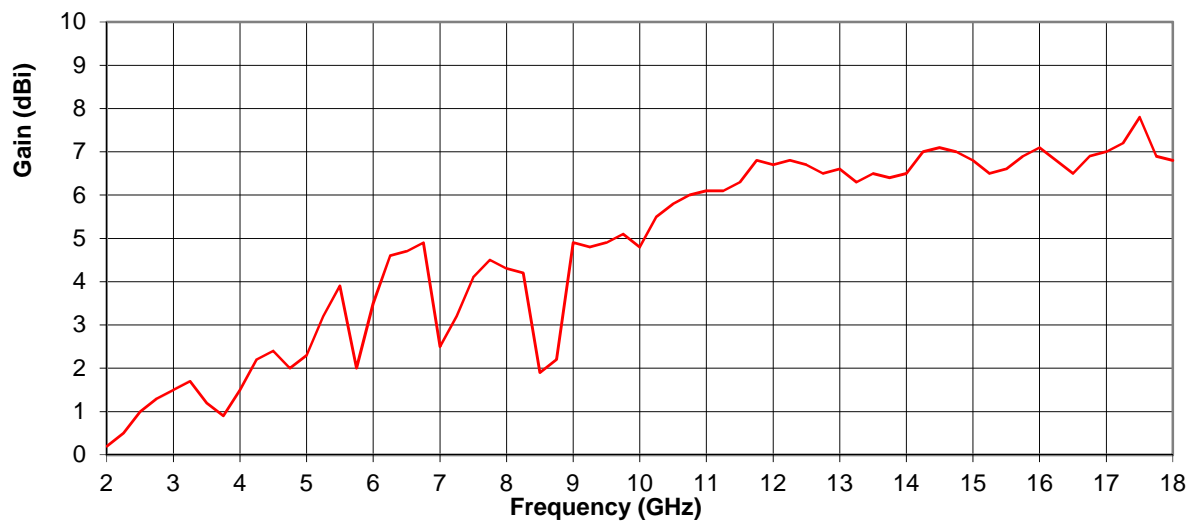


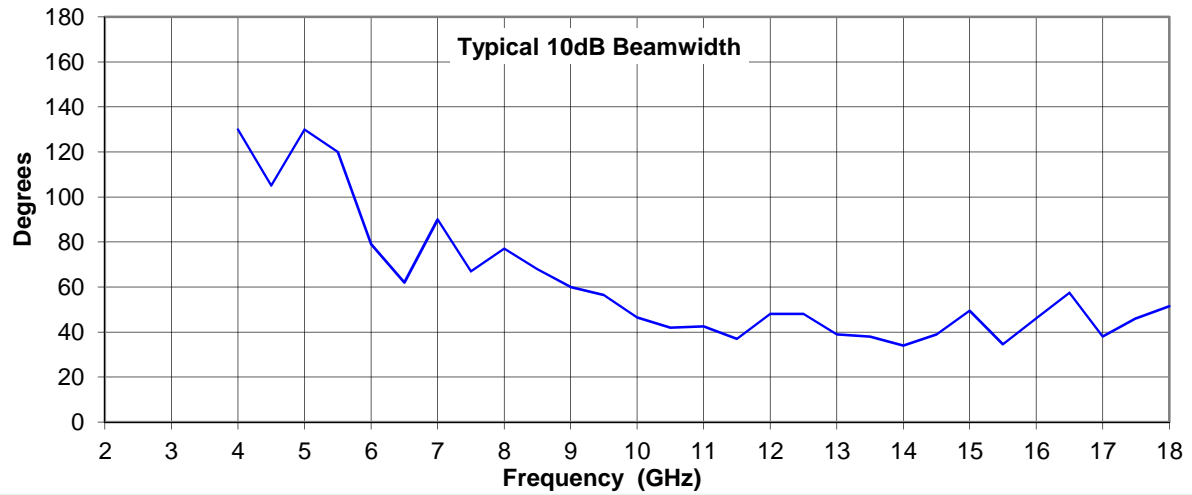
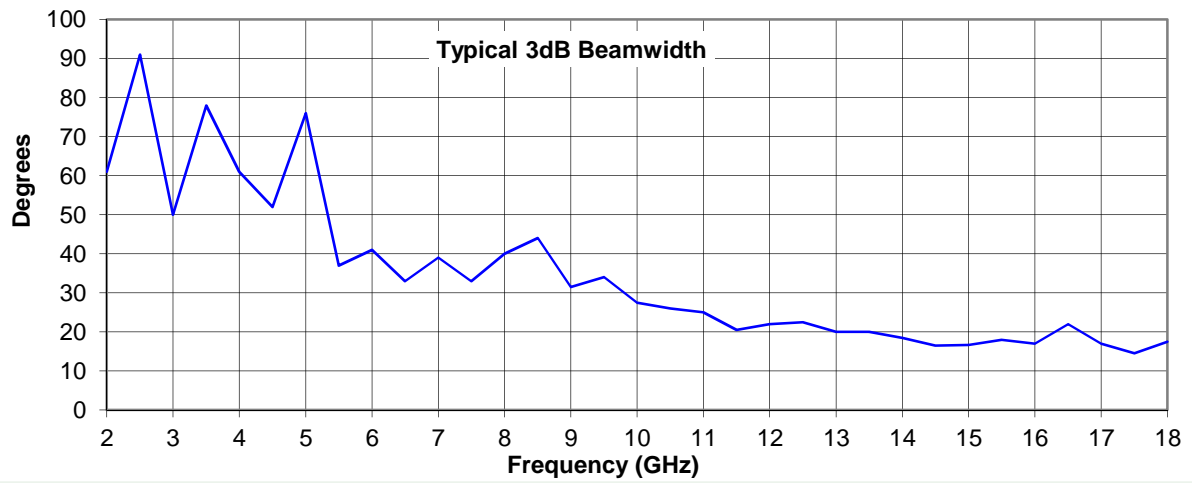
Typical Specification

Frequency	2 to 18 GHz
Connector type	SMA type jack
Power Handling	40 Watt c.w.
VSWR	< 2.5:1
Gain	0.2 to 7.8 dBi
Antenna Factor	36.1 to 48.5 dB/m
3dB Beamwidth	14.5 to 91 degrees
Weight	3.1 kg nominal
Maximum size	232 mm diameter x 170 mm overall height (incl. bracket)
Mounting	Mounting bracket attached with 2 'U' bolts, suitable for mounting on a pole up to diameter 60 mm
Construction	Stainless Steel, Aluminium and Engineering Plastics. Painted.

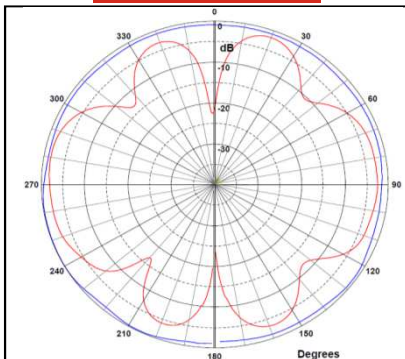
Typical Antenna Gain / Factor

This is calculated by reference to standard gain horn antennas, and cross checked with reference to the antenna beamwidth, with an estimated error of +/- 0.8dB.

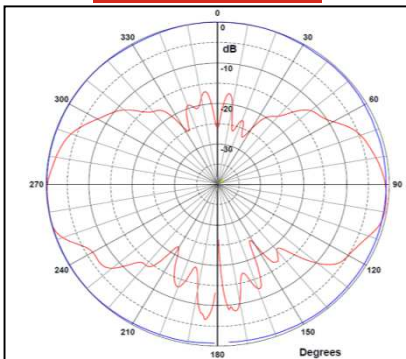




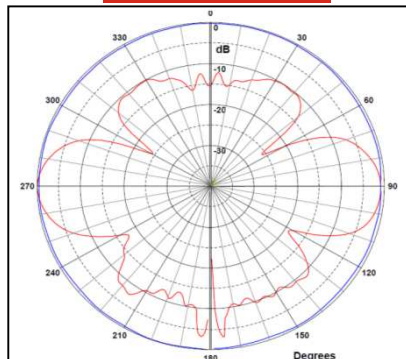
2 GHz



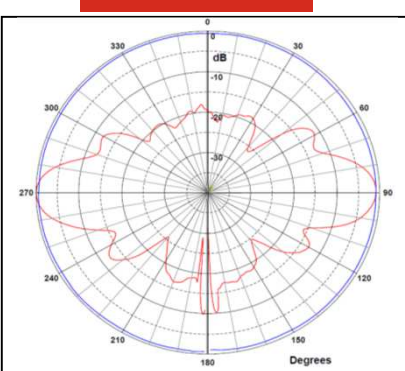
6 GHz



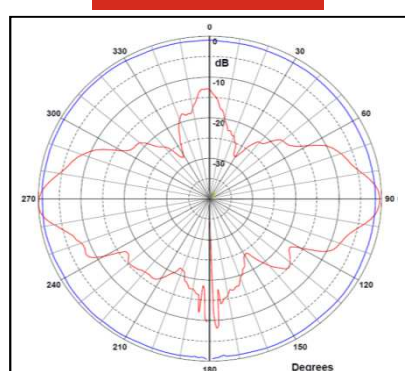
10 GHz



14 GHz



18 GHz



Red trace = Elevation, Blue trace = Azimuth cut

