

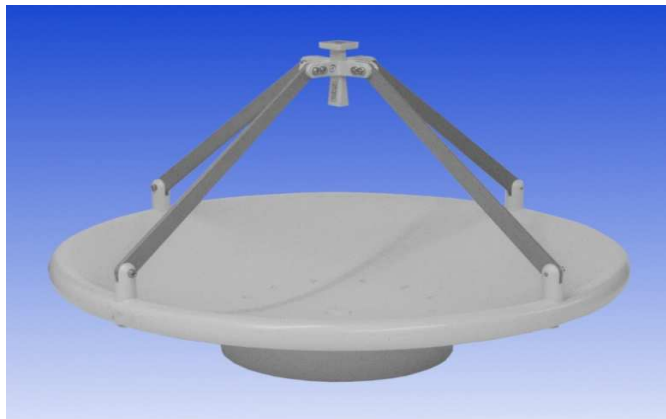


0.34 m Aluminium Reflector & 26 - 40 GHz Feed fitted with a Waveguide Flange

Catalogue number **QSR-340-A-152 & QSF-SL-26-40-F**

Q-par reference **QMS-00704**

Contents **Summary**
Typical Antenna Gain
Typical Beamwidth / Patterns
VSWR



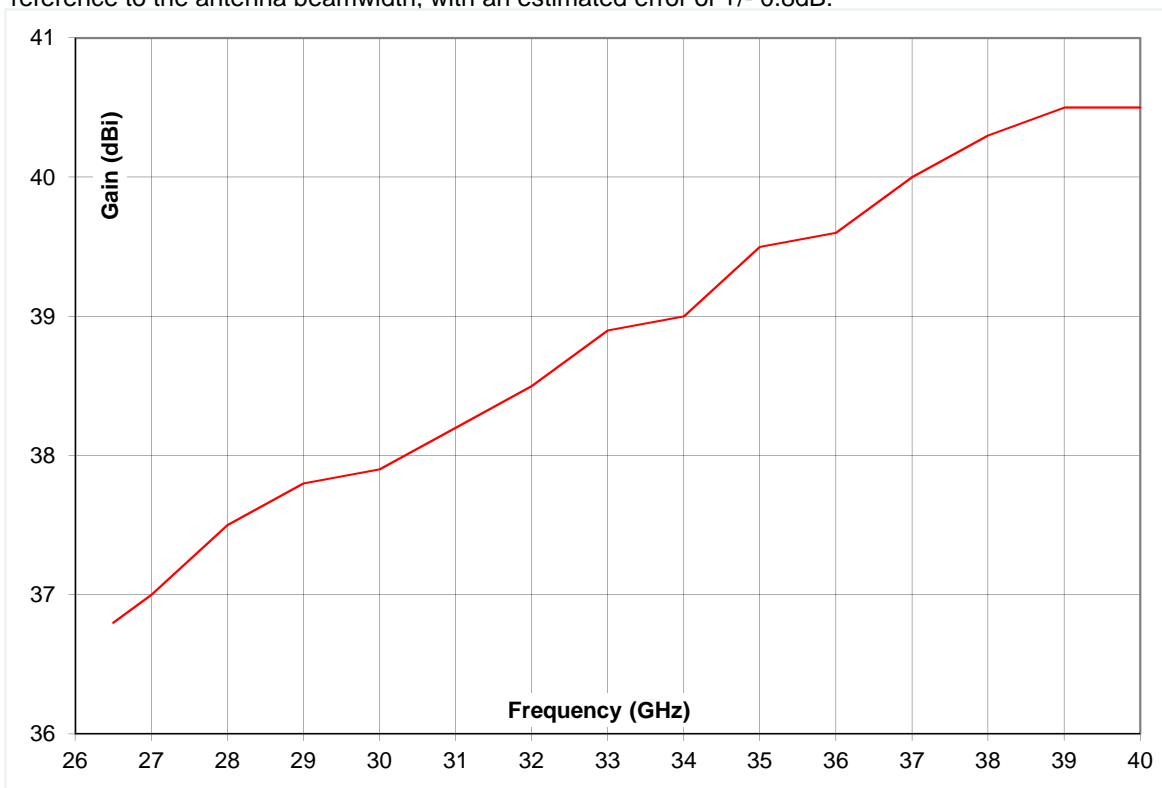
Typical photograph. Finish according to customer specifications.

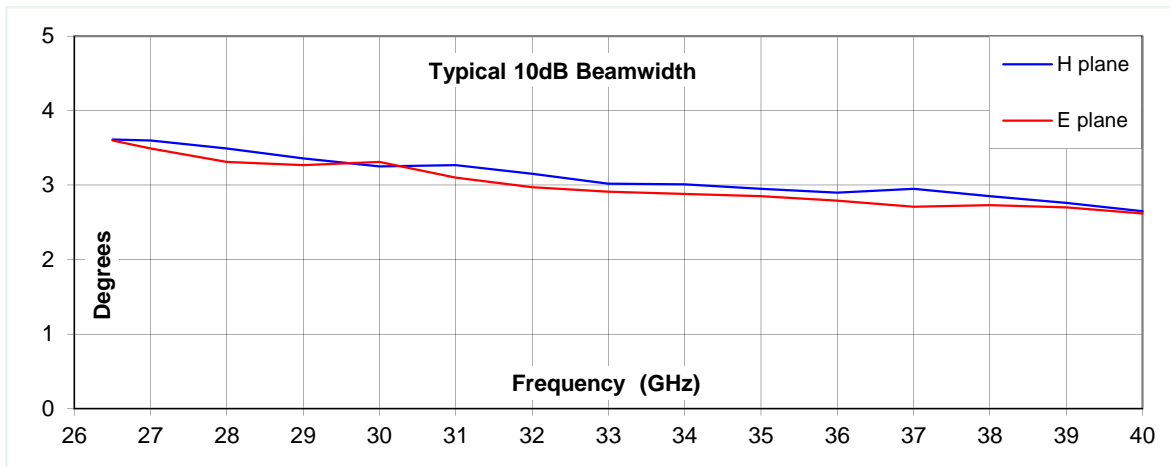
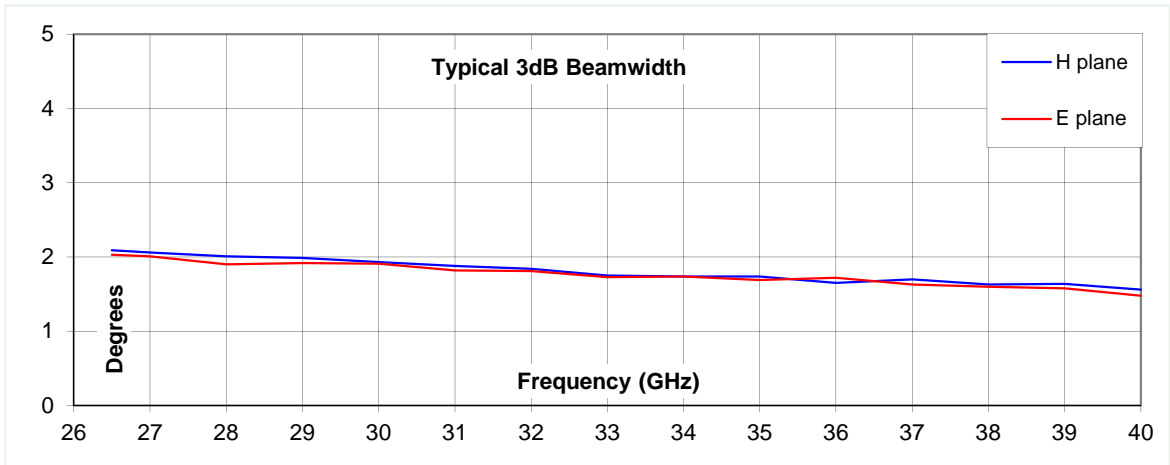
Typical Specification

Frequency	26.5 to 40 GHz
Connector type	WG22 R320 WR28 flange
Power Handling	5 kWatt c.w.
VSWR	Typically < 1.4:1
Gain	36.8 to 40.5 dBi
3dB Beamwidth	1.5 to 2.1 degrees
10dB Beamwidth	2.6 to 3.6 degrees
Weight	1.9 kg nominal
Focal Length	152 mm
F/D	0.45
Maximum size	Reflector diameter 370 mm maximum
Mounting	8 holes, tapped M6, 125 mm pitch circle diameter
Construction	Spun aluminium reflector. Powdercoat finish. Copper / brass feed, painted

Typical Antenna Gain

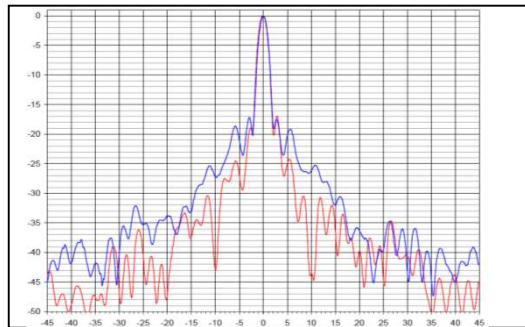
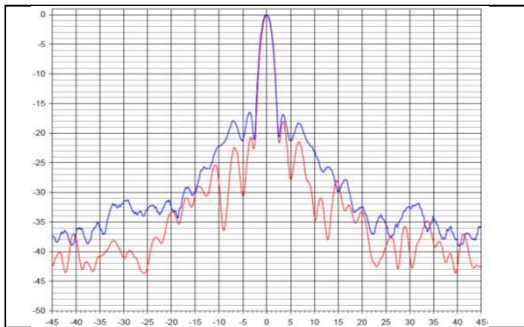
This is calculated by reference to standard gain horn antennas, and cross checked with reference to the antenna beamwidth, with an estimated error of +/- 0.8dB.



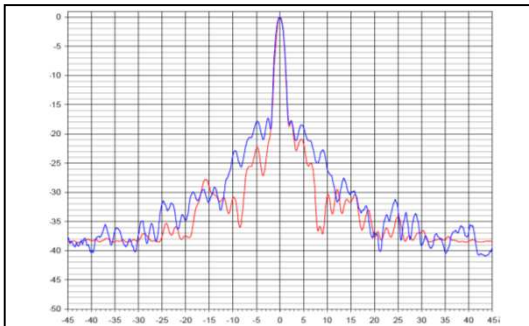


26.5 GHz

33 GHz



40 GHz



Red trace = E plane; blue trace = H plane.

