



# 0.6 m Aluminium Reflector & 2 - 18 GHz Wideband Reflector Feed fitted with an SMA type Connector and a Radome

Catalogue number **QSR-600-A-228 & QWF-SL-2-18-S-R**

Q-par reference **QMS-00617**

Contents **Summary**  
**Typical Gain / Antenna Factor**  
**Typical Beamwidth / Patterns**  
**VSWR**

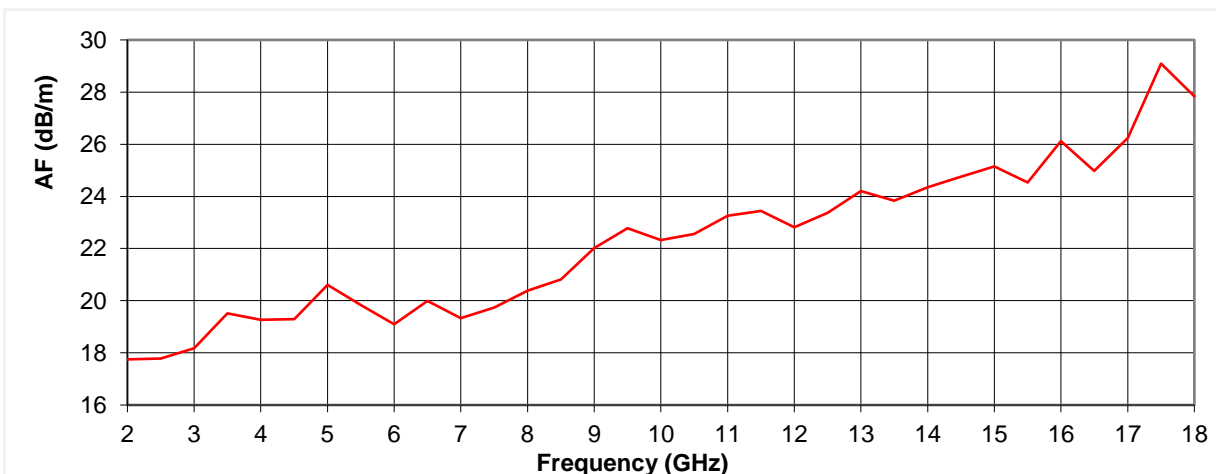
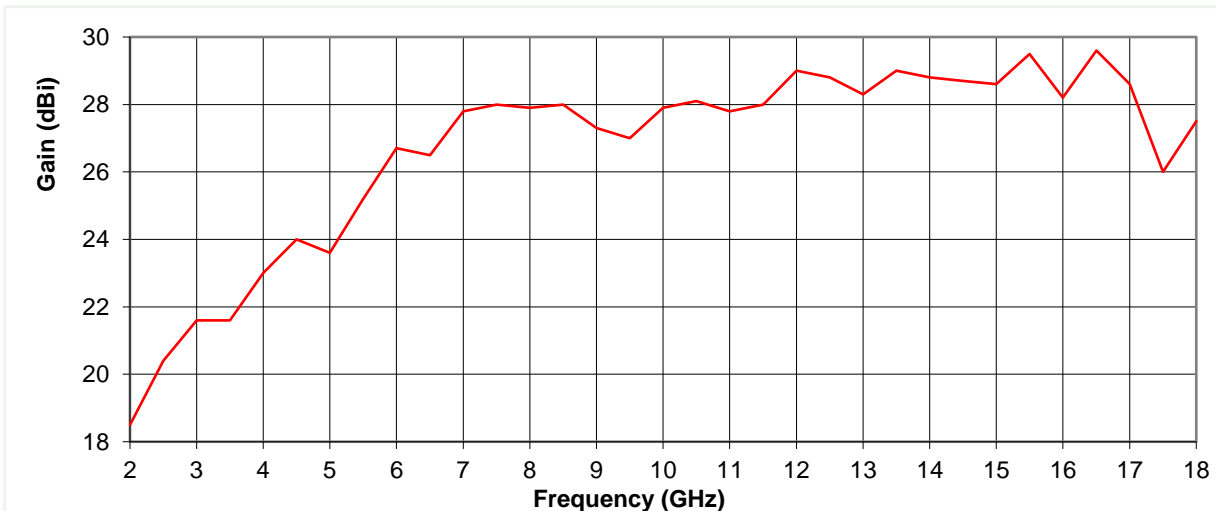


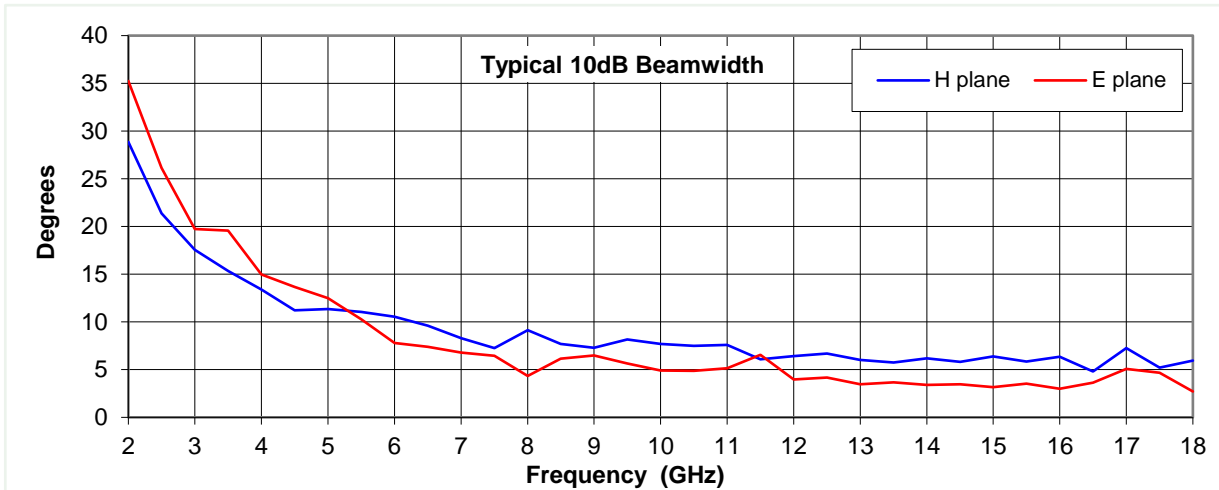
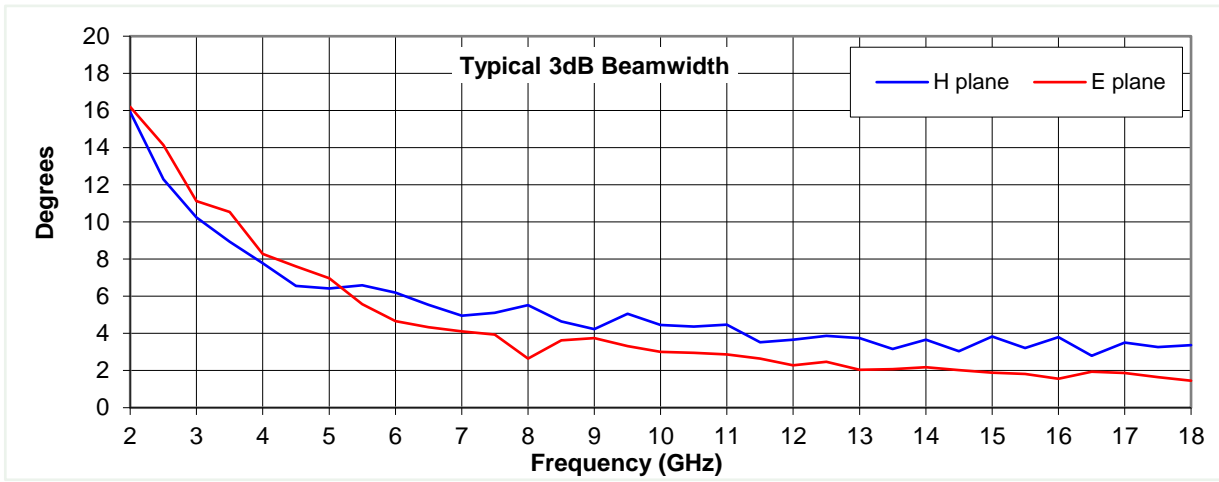
## Typical Specification

<b>Frequency</b>	2 to 18 GHz
<b>Connector Type</b>	SMA
<b>Power Handling</b>	20 Watt c.w.
<b>VSWR</b>	Typically < 2.5 : 1
<b>Gain</b>	18.5 to 29.6 dBi
<b>Antenna Factor</b>	17.8 to 29.1 dB/m
<b>3dB Beamwidth</b>	1 to 16 degrees
<b>10dB Beamwidth</b>	3 to 35 degrees
<b>Weight</b>	5 kg nominal
<b>Maximum Size</b>	Reflector diameter 625 mm max
<b>Mounting</b>	8 holes, tapped M6 on 125 mm pitch circle diameter
<b>Construction</b>	Spun aluminium reflector, powdercoat finish. Feed from aluminium and engineering plastics, painted.

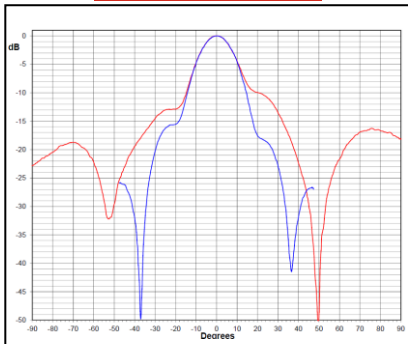
## Typical Antenna Gain / Factor

This is calculated by reference to standard gain horn antennas, and cross checked with reference to the antenna beamwidth, with an estimated error of +/- 0.8dB.

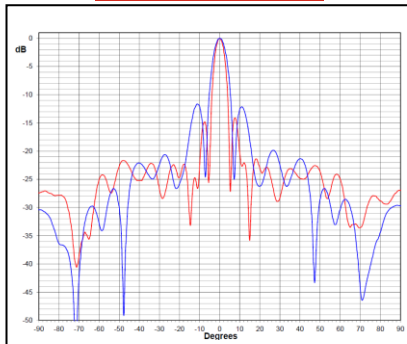




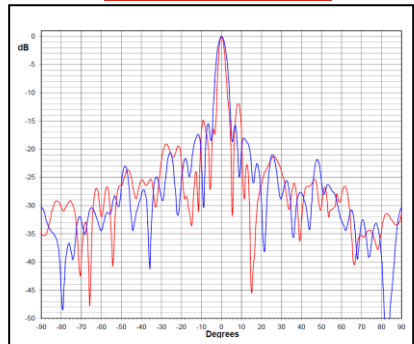
**2 GHz**



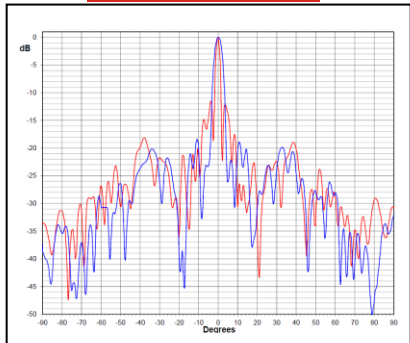
**6 GHz**



**11 GHz**



**15 GHz**



**18 GHz**

