

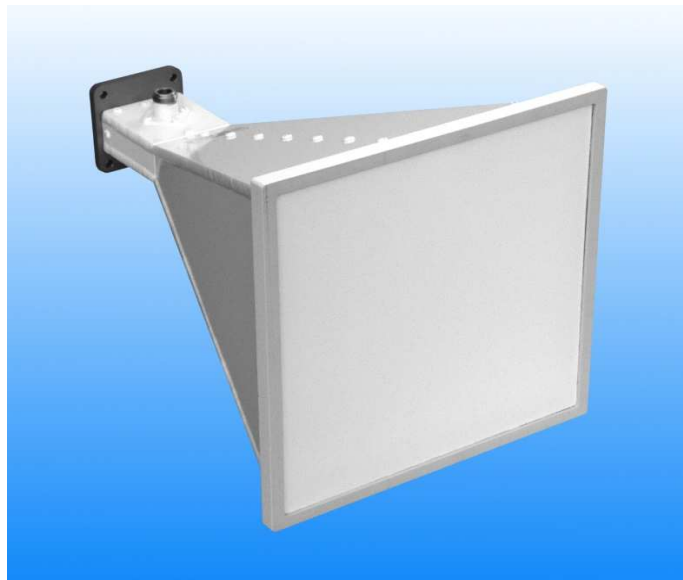
## **Wideband Horn Antenna**

### **2 to 8 GHz**

Catalogue number: **QWH-SL-2-8-N-13**

Q-par reference **QMS-00259**

Contents: **Summary**  
**Antenna Gain**  
**Beamwidth**  
**VSWR**



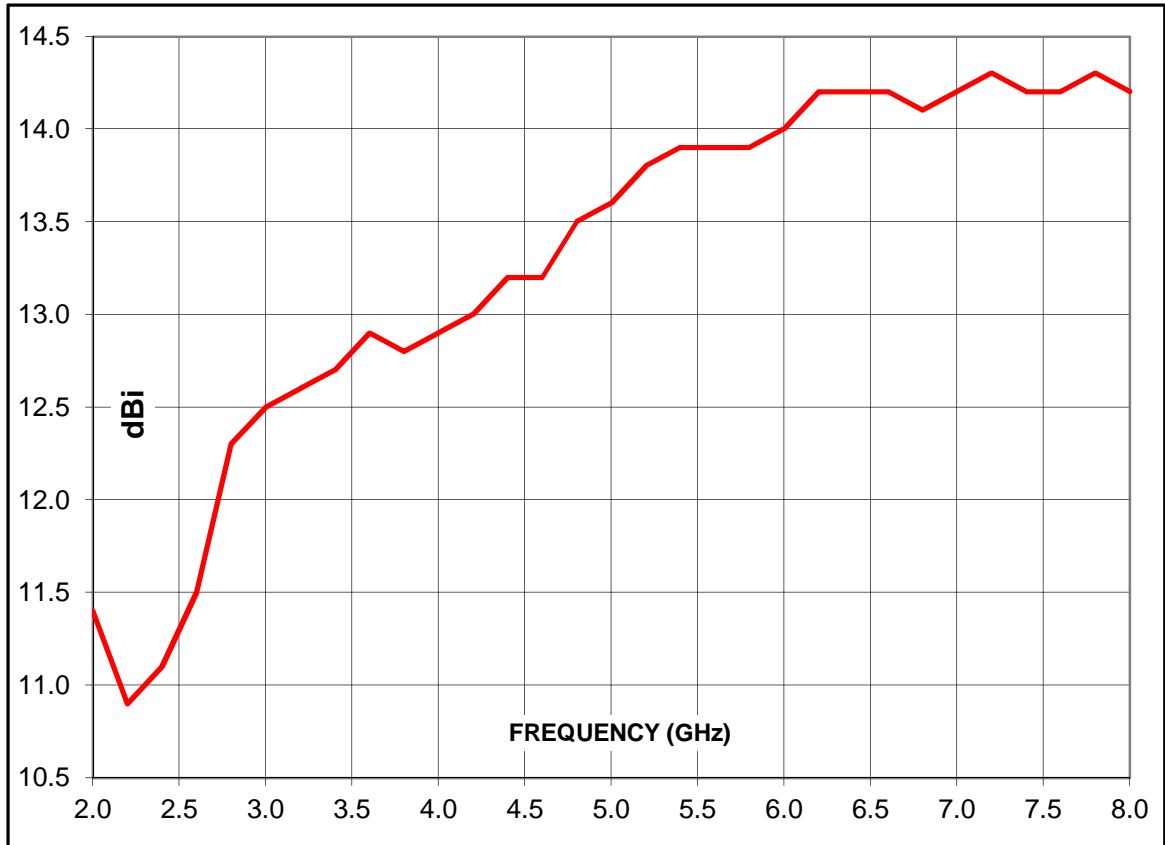
Test Report

## Summary

Frequency	2 to 8 GHz
Connector type	N type jack
VSWR	<1.5:1
Gain	10.9 to 14.3 dBi
Power handling	500 Watts cw
Weight	2.06 kg
Size- max.	216 mm x 216 mm ext. aperture, 323 mm long
Mounting	Rear mounting plate, 4 holes diameter 5.2 mm, 50 mm centres

## Typical Antenna Gain

This is calculated by reference to standard gain horn antennas, and cross checked with reference to the antenna beamwidth, with an estimated error of +/- 0.8dB.



The recommended far field range for this antenna is > 2.1 Metres

Frequency GHz	Gain dBi	Antenna Factor dB/m
2.0	11.4	24.9
3.0	12.5	27.3
5.0	13.6	30.6
7.0	14.2	32.9
8.0	14.2	34.1

