

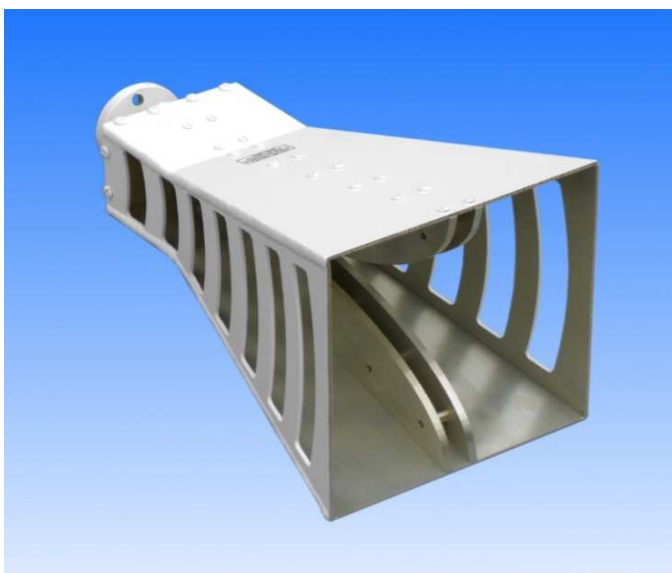
## Wideband High-Power Horn Antenna

### 1 to 8 GHz

Catalogue number: **QWH-SL-1-8-B-SG**

Q-par reference: **QMS-00058**

Contents: **Summary**  
**Typical Gain / Antenna Factor**  
**Typical Beamwidth / Patterns**  
**VSWR**



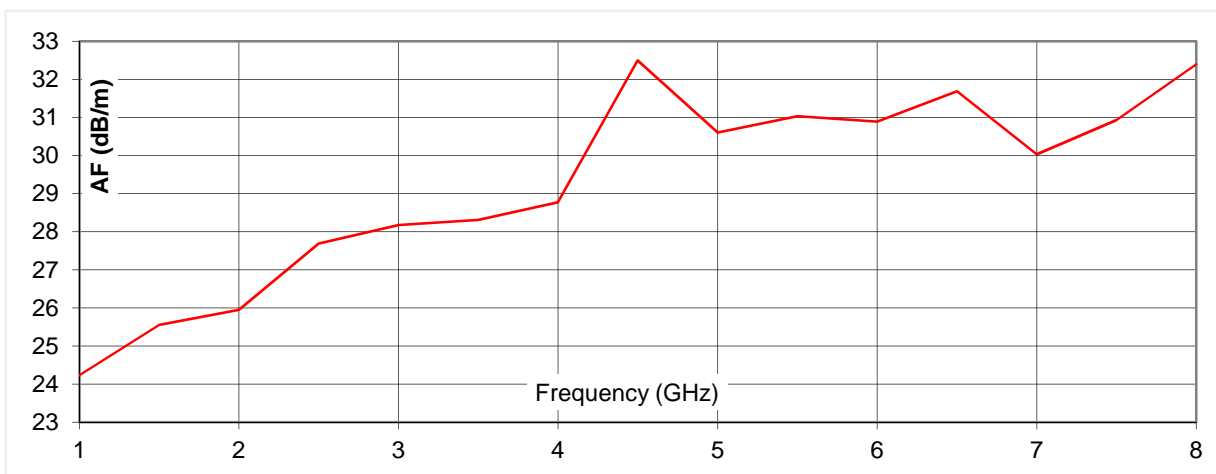
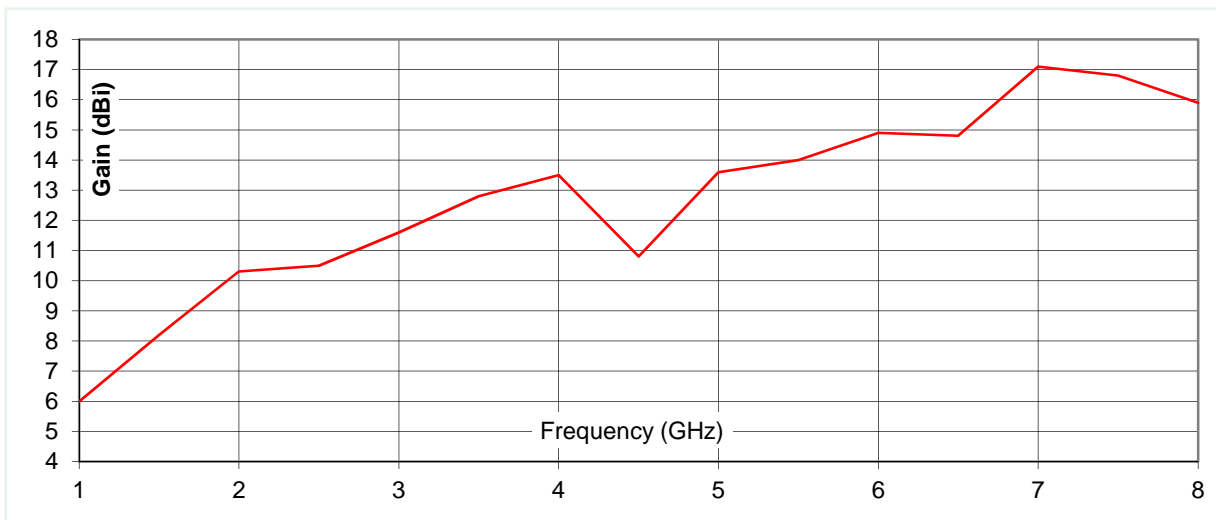
Test Report

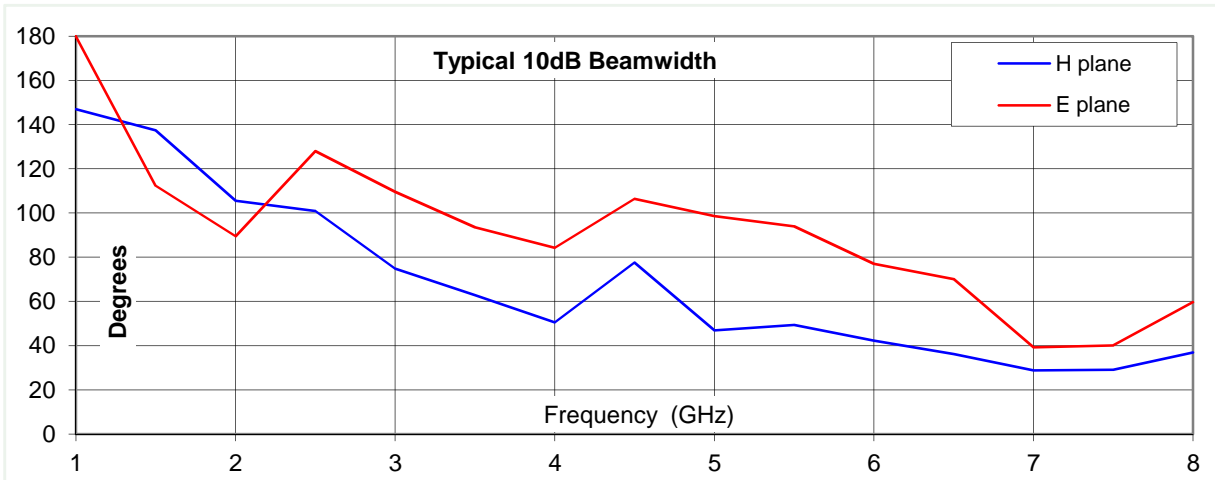
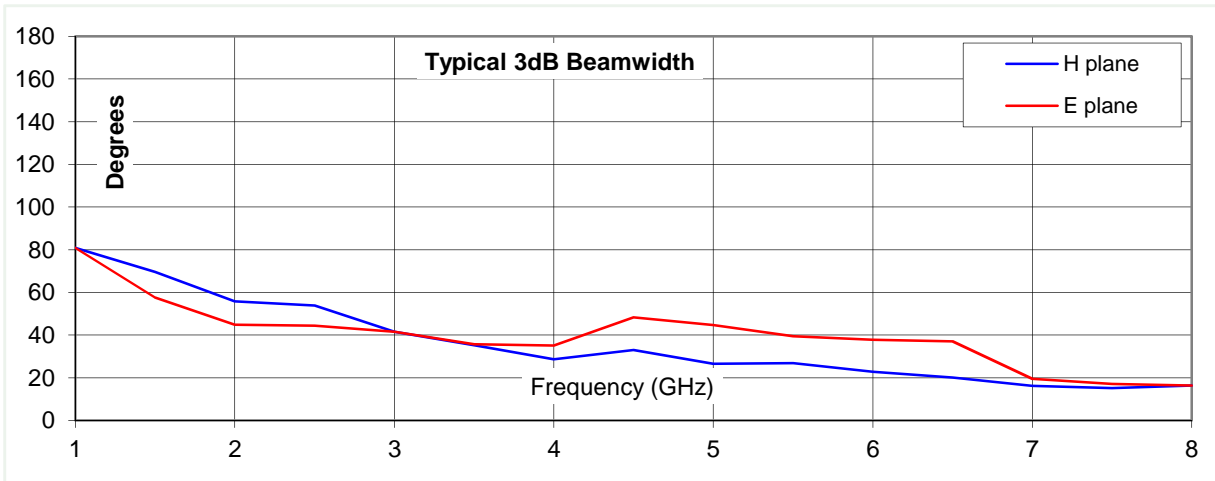
### Typical Specification

<b>Frequency</b>	1 to 8 GHz
<b>Connector type</b>	7/8 IEC / EIA female
<b>Power Handling</b>	1.5 kW c.w.
<b>VSWR</b>	Typically < 1.4:1
<b>Gain</b>	6 to 17 dBi
<b>Antenna Factor</b>	24.2 to 32.5 dB/m
<b>3dB Beamwidth</b>	15 to 81 degrees
<b>10dB Beamwidth</b>	29 to 180 degrees
<b>Weight</b>	1.7 kg - nominal
<b>Size- max.</b>	186 x 184 mm aperture x 324 mm long
<b>Mounting</b>	via 7/8" connector flange
<b>Construction</b>	Aluminium

### Typical Antenna Gain / Factor

This is calculated by reference to standard gain horn antennas, and cross checked with reference to the antenna beamwidth, with an estimated error of +/- 0.8dB.

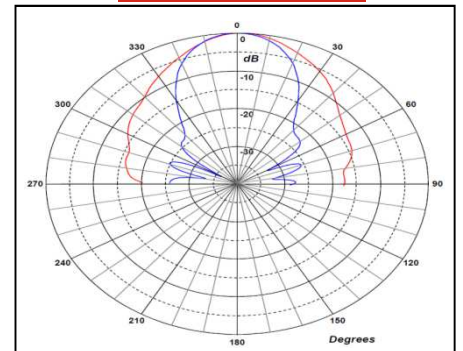
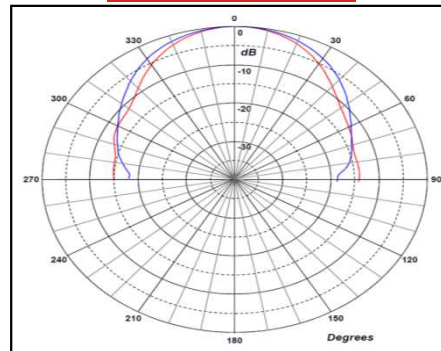
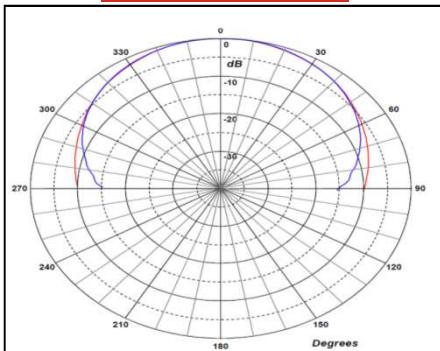




1 GHz

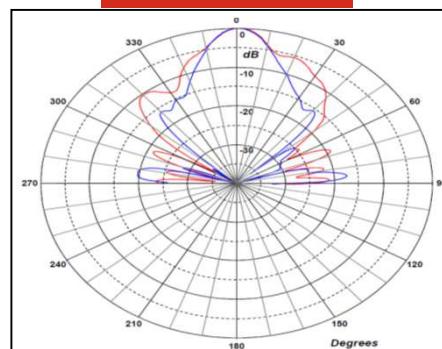
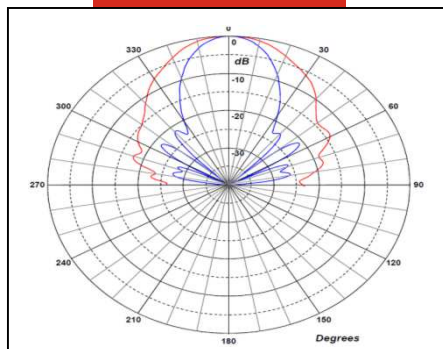
2 GHz

4 GHz



6 GHz

8 GHz



Red trace = E-plane, Blue trace = H-plane cut