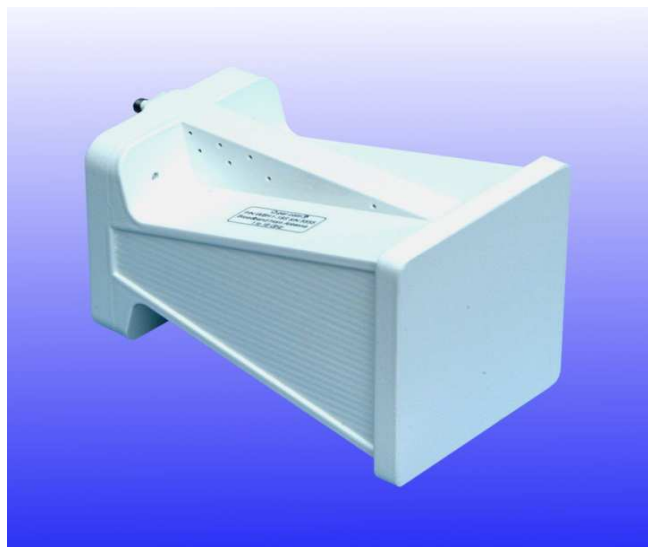


Wideband Horn Antenna 1 to 18 GHz

Catalogue number: **QWH-SL-1-18-S-SG-R**

Q-par ref: **QMS-00059**

Contents: **Summary**
Typical Antenna Gain / Factor
Typical Beamwidth / Patterns
VSWR



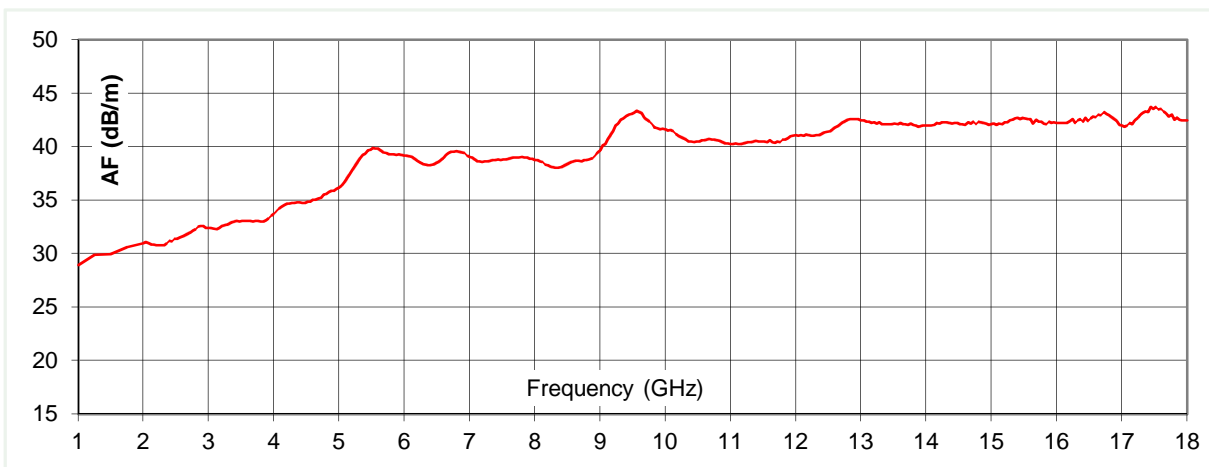
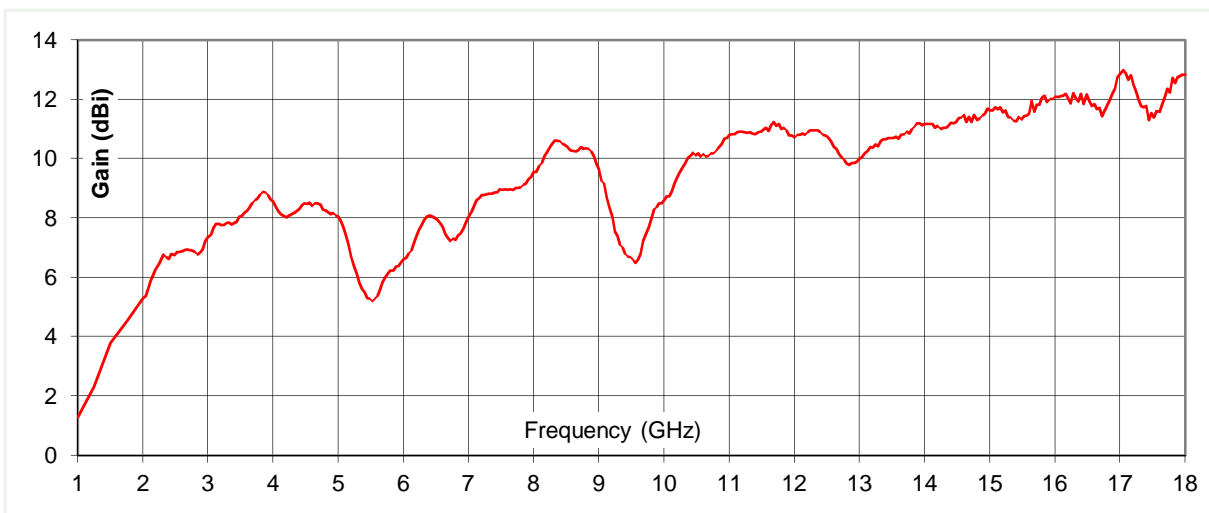
Test Report

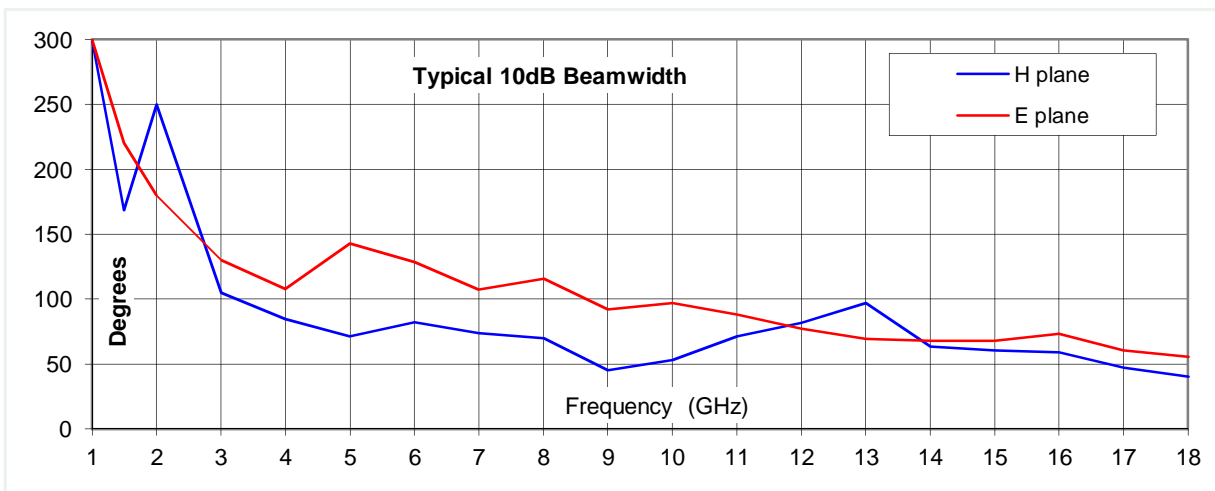
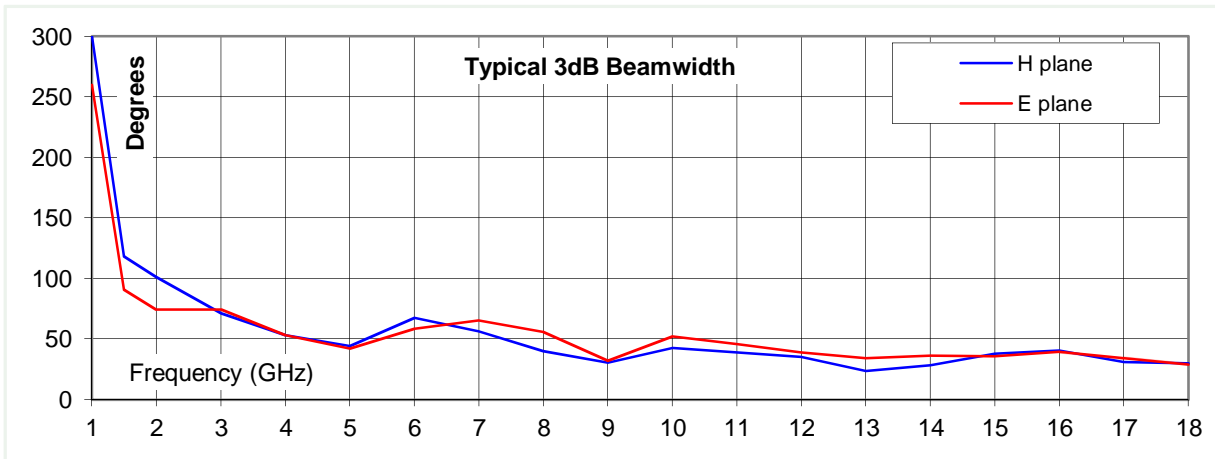
Typical Specification

Frequency	1 to 18 GHz
Connector type	SMA type jack
Power Handling	40 Watt c.w.
VSWR	Typically < 2:1
Gain	1.3 to 12.8 dBi
Antenna Factor	28.9 to 43.6 dB/m
3dB Beamwidth	23 to 300 degrees
10dB Beamwidth	40 to 300 degrees
Weight	0.7 kg
Size- max.	96 mm x 90 mm x 148 mm long (incl. connector)
Mounting	2 x M5 tapped holes, 38 mm centres
Construction	Aluminium and engineering plastics. Painted.

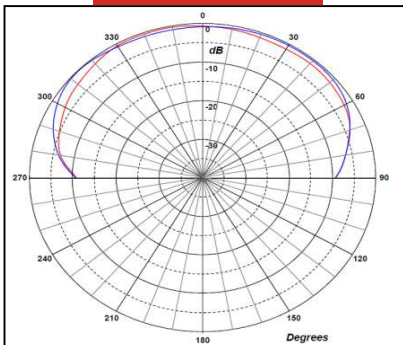
Typical Antenna Gain / Factor

This is calculated by reference to standard gain horn antennas, and cross checked with reference to the antenna beamwidth, with an estimated error of +/- 0.8dB.

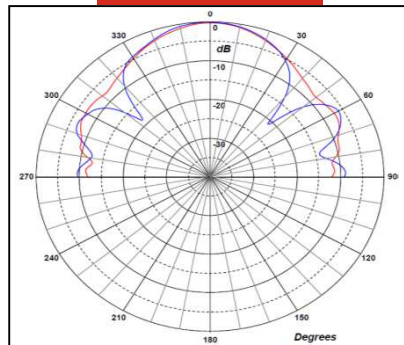




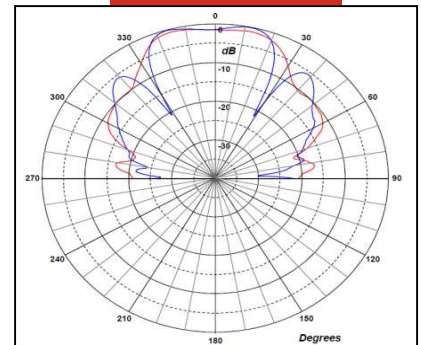
1.8 GHz



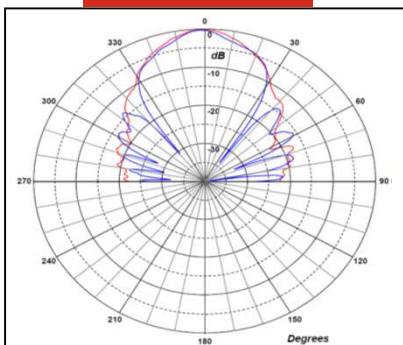
5 GHz



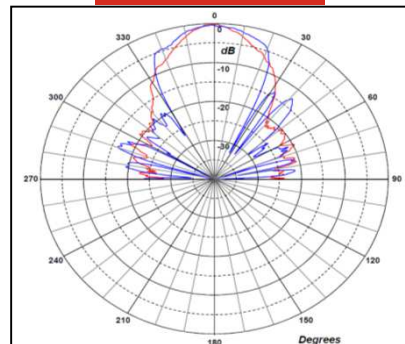
10 GHz



15 GHz



18 GHz



Note: Red trace = E-plane, Blue trace = H-plane cut