

0.7 m Offset Antenna

0.9 to 18 GHz

Dual Polar Feed

Reflector catalogue number: **QSR-700-A-OST**

Feed catalogue number: **QWH-DL-0.9-18-S-SG-R**

Q-par reference: **QMS-00733**

Contents: **Summary**
Typical Antenna Gain
Typical Beamwidth / Patterns
VSWR
Isolation-between connectors



KG 14/08/2014 0307

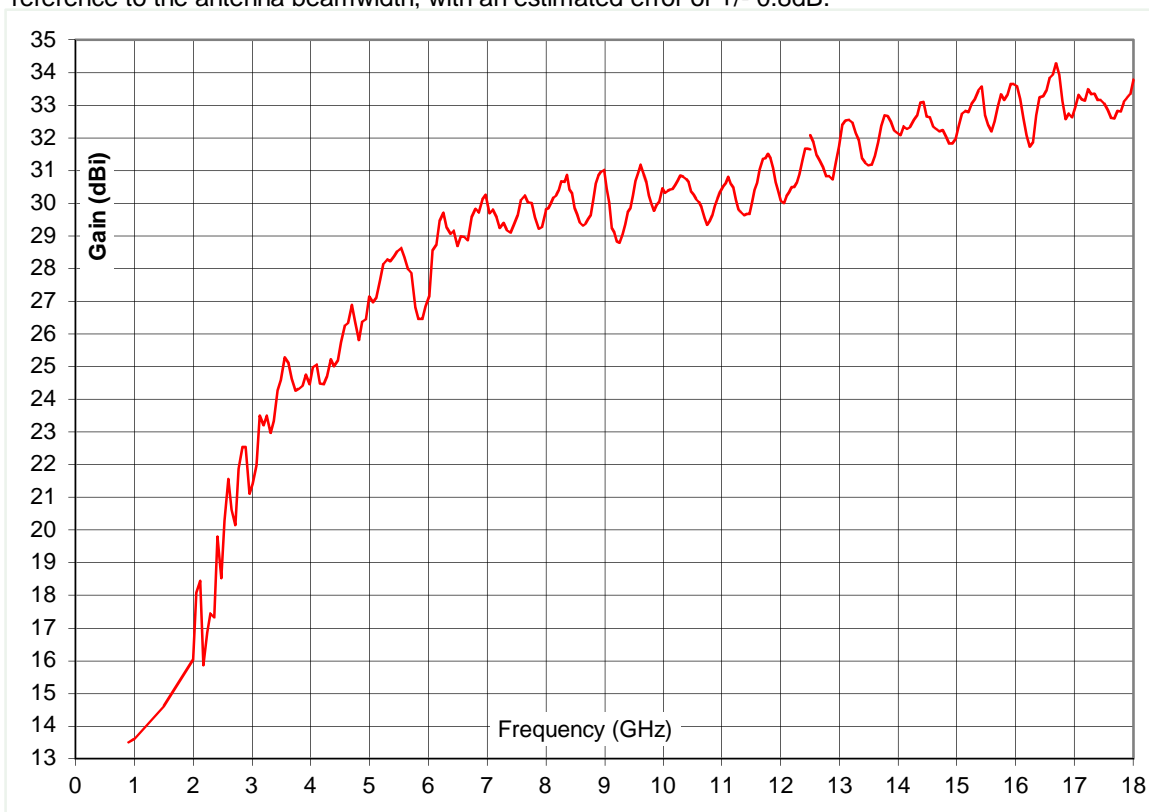
Test Report

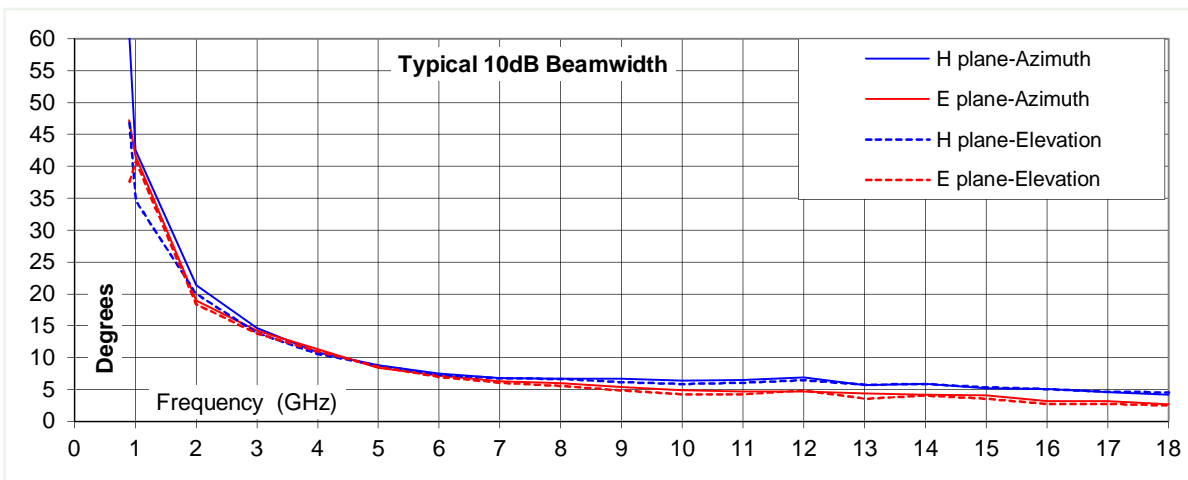
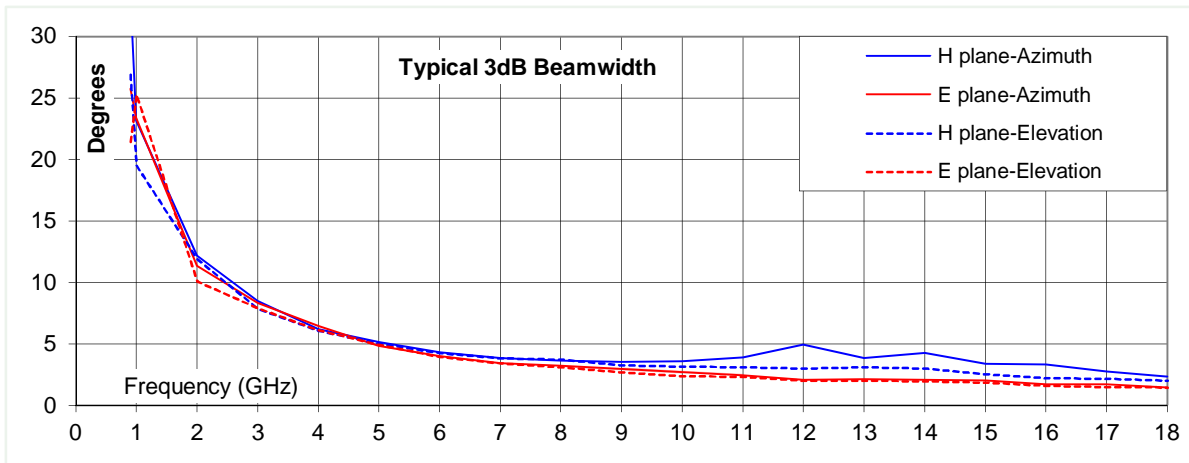
Typical Specification

Frequency	0.9 to 18 GHz
Connector type	2 x SMA type jack
Power Handling	40 Watt c.w.
VSWR	Typically < 2.3:1 2.6:1 Max.
Gain	17.5 to 34.5 dBi
3dB Beamwidth	1.5 to 34 deg. Azimuth; 1.5 to 27 deg. Elevation
10dB Beamwidth	2.7 to 61 deg. Azimuth; 2.5 to 47 deg. Elevation
Weight	10 kg nominal
Isolation	> 20 db (between connectors) Typically > 25dB
Size- max.	Reflector diameter 760 mm (electrical)
Mounting	Tripod mount plate. See interface drawing.
Construction	Pressed aluminium reflector. Powdercoat finish. Composite feed, painted.

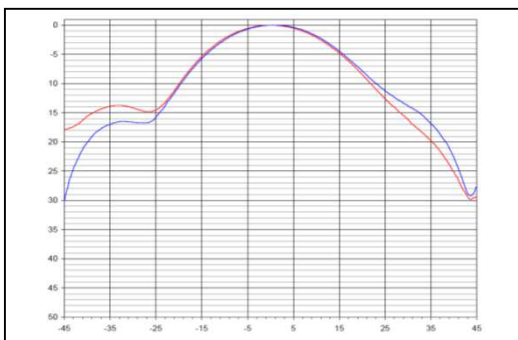
Typical Antenna Gain

This is calculated by reference to standard gain horn antennas, and cross checked with reference to the antenna beamwidth, with an estimated error of +/- 0.8dB.

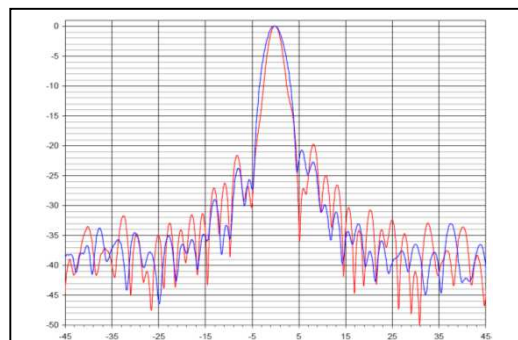




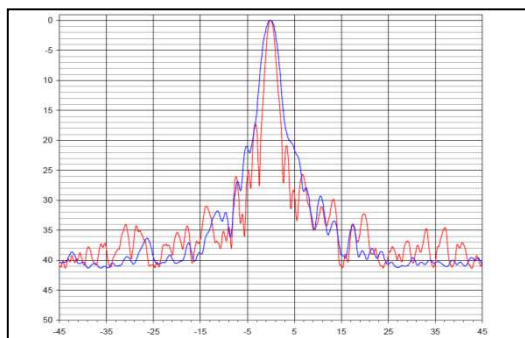
0.9 GHz



10 GHz



18 GHz



Azimuth
Patterns

Red trace = E-plane, Blue trace = H-plane cut