

## 0.7 m Aluminium Reflector & 2 - 8 GHz Wideband Feed fitted with an N type Connector

Catalogue number **QSR-700-A-337 & QWF-SL-2-8-N-R**

Q-par reference **QMS-00339**

Contents **Summary**  
**Typical Gain / Antenna Factor**  
**Typical Beamwidth**  
**VSWR**



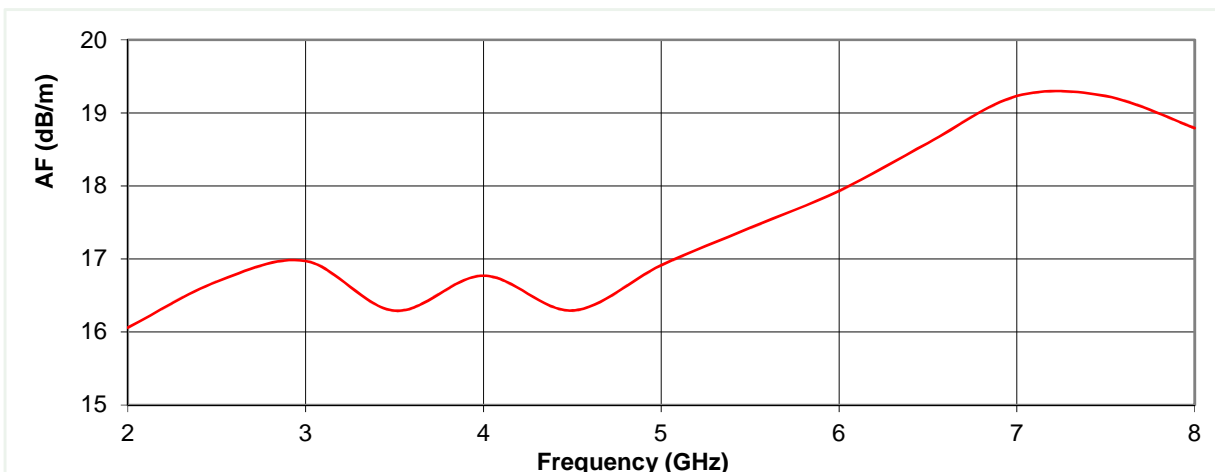
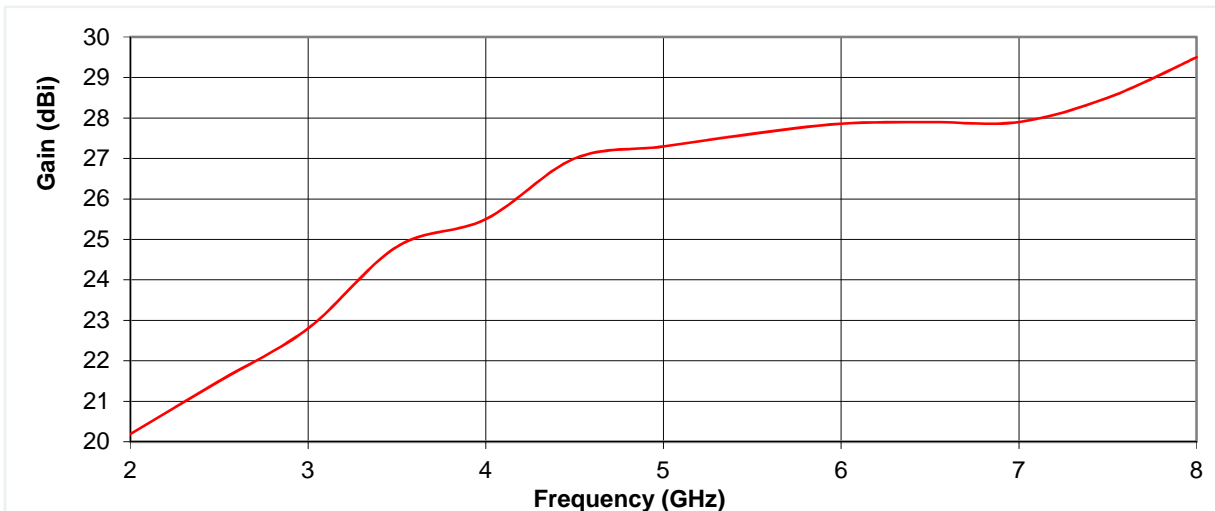
Typical photograph. Finish according to customer specifications.

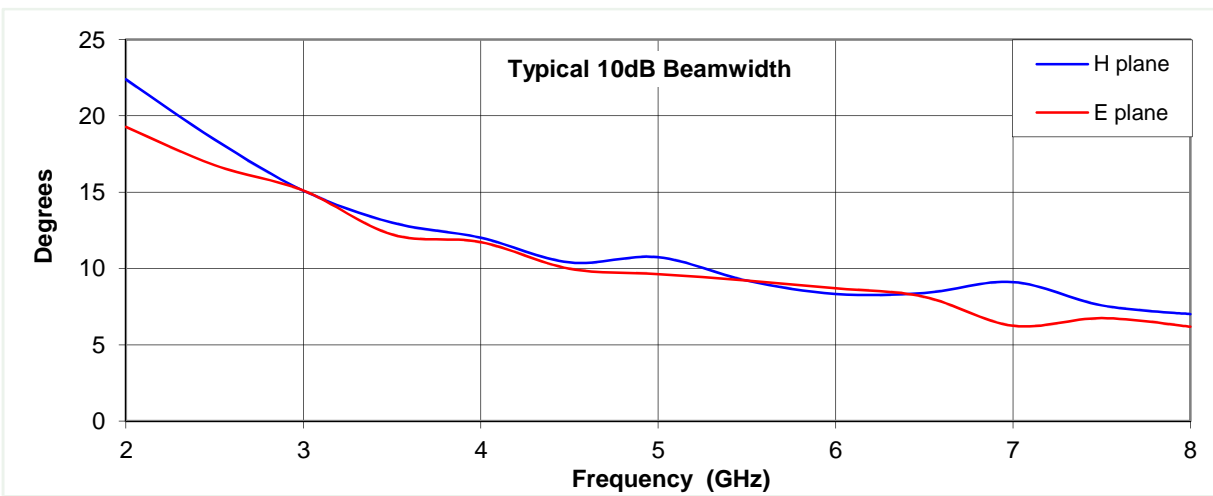
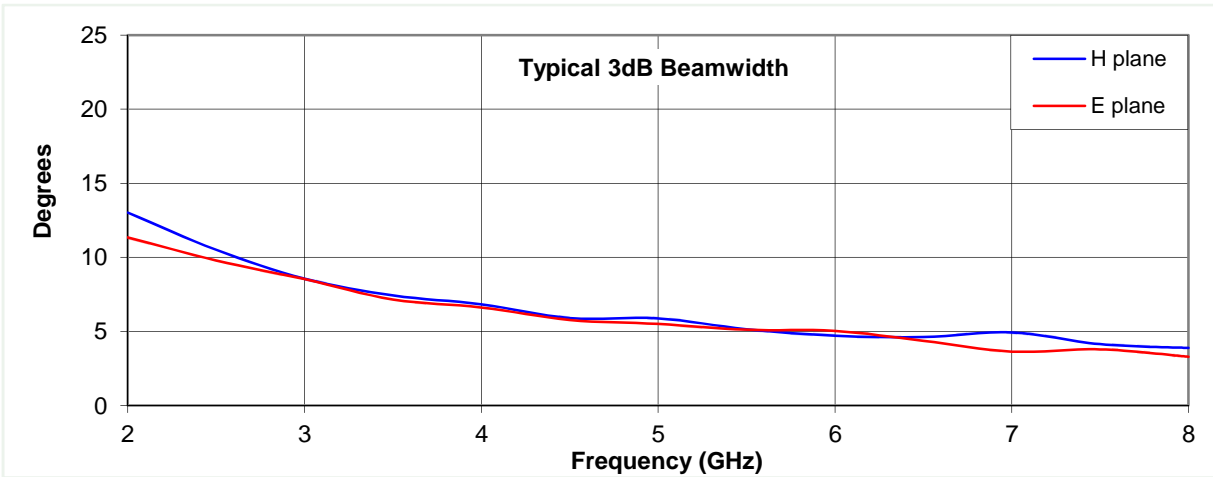
### Typical Specification

<b>Frequency</b>	2 to 8 GHz
<b>Connector Type</b>	N type jack
<b>Power Handling</b>	500 W c.w.
<b>VSWR</b>	Typically < 2.5:1
<b>Gain</b>	20.2 to 29.5 dBi
<b>Antenna Factor</b>	16.1 to 19.2 dB/m
<b>3dB Beamwidth</b>	3 to 13 degrees
<b>10dB Beamwidth</b>	6 to 22 degrees
<b>Weight</b>	7 kg
<b>Maximum Size</b>	Reflector 740 mm diameter
<b>Mounting</b>	Eight holes, tapped M6 on 125 mm pitch circle diameter
<b>Construction</b>	Aluminium reflector, powdercoat finish. Copper / brass/ engineering plastic feed horn, painted

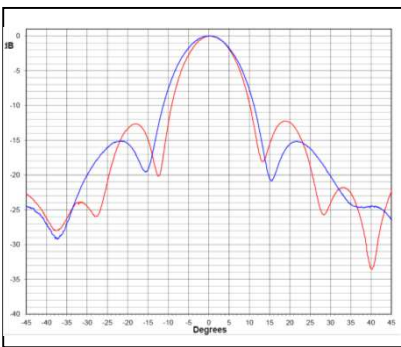
### Typical Antenna Gain / Factor

This is calculated by reference to standard gain horn antennas, and cross checked with reference to the antenna beamwidth, with an estimated error of +/- 0.8dB.

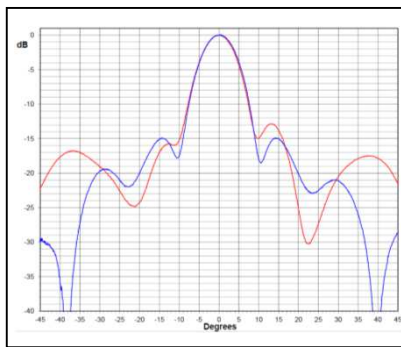




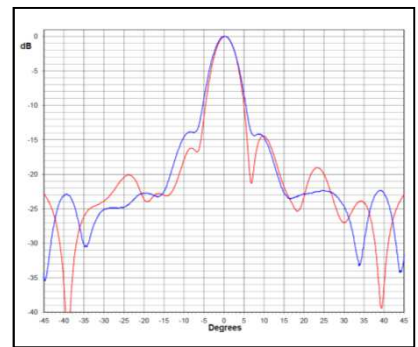
**2 GHz**



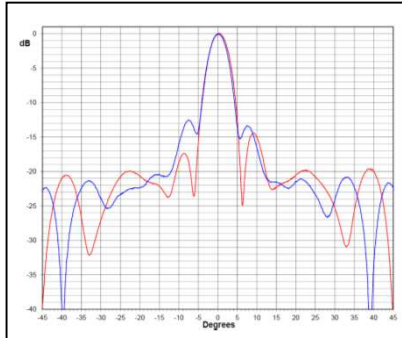
**3 GHz**



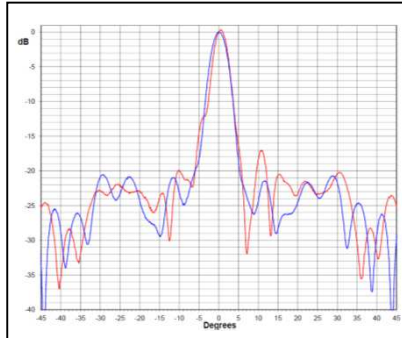
**5 GHz**



**6 GHz**



**8 GHz**



Red trace = E-plane cut, Blue trace = H-plane cut