

1.2 m Reflector Antenna

2 to 18 GHz

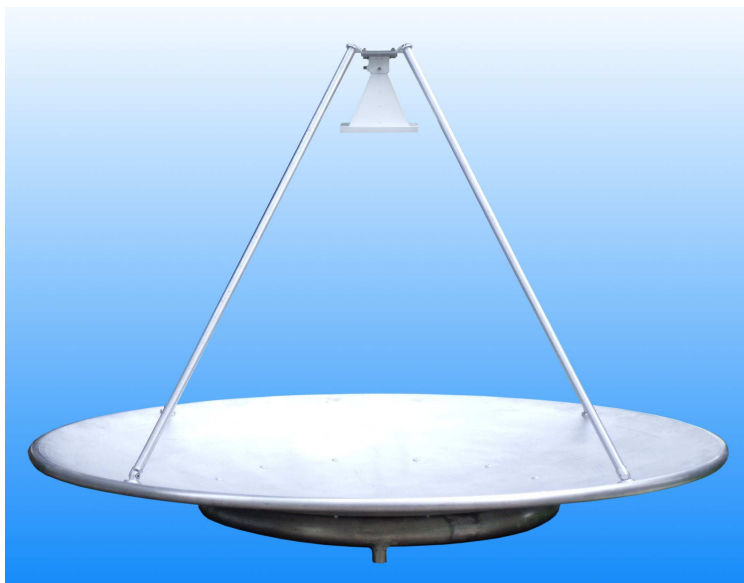
Dual Polar Feed

Reflector catalogue number: **QSR-1200-A-755**

Feed catalogue number: **QWF-DL-2-18-S-R**

Q-par reference: **QMS-00262**

Contents: **Summary**
Typical Antenna Gain
Typical Beamwidth / Patterns
VSWR
Isolation-*between connectors*



Test Report

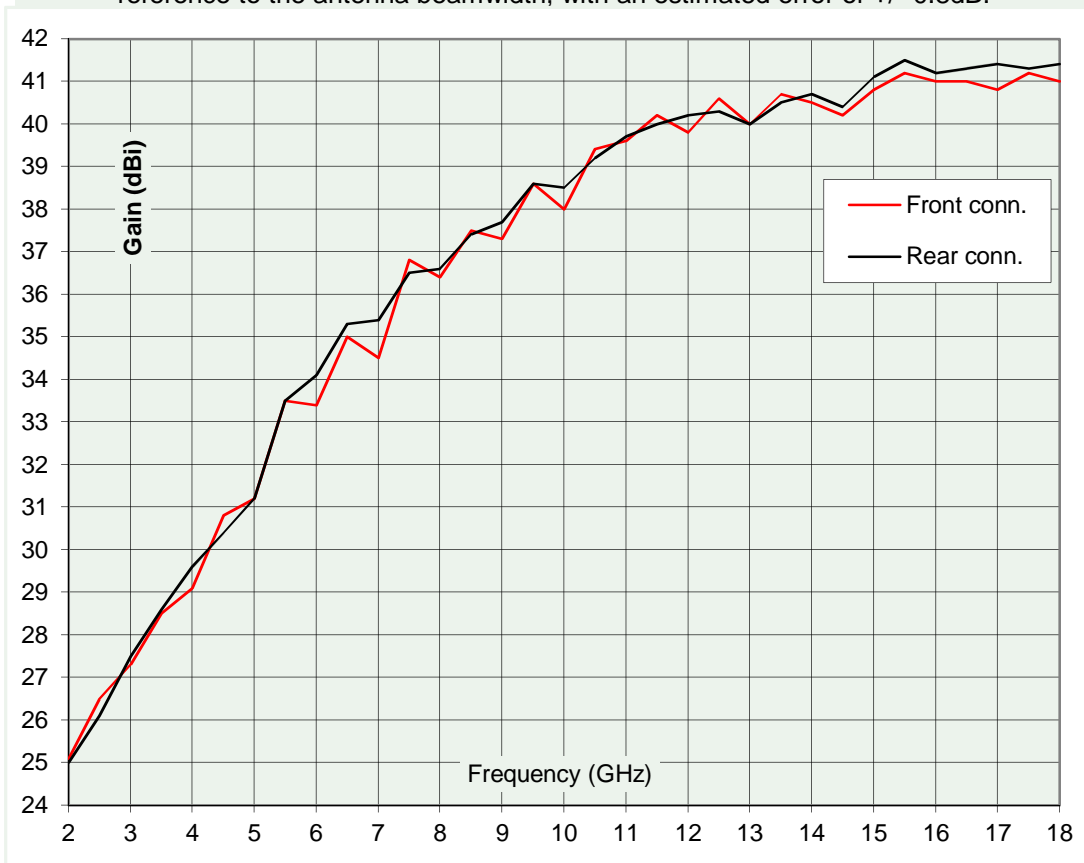
SD 01/07/2013 4053

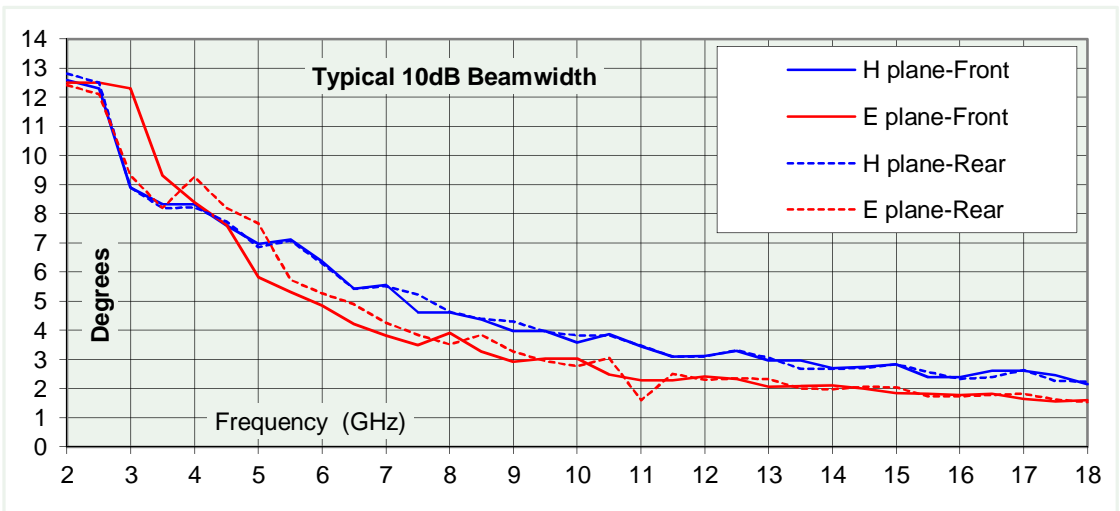
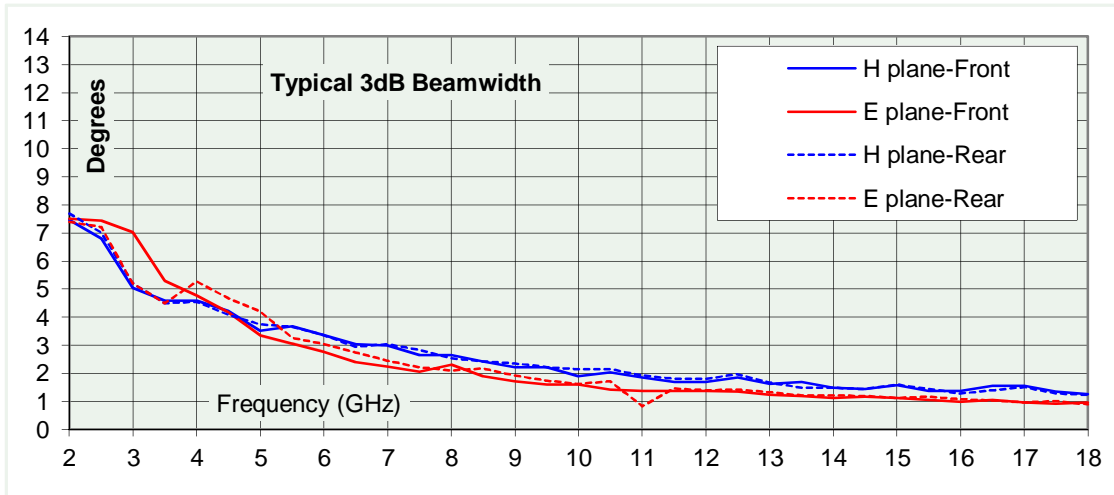
Typical Specification

Frequency	2 to 18 GHz
Connector type	SMA type jack
Power Handling	40 Watt c.w.
VSWR	Typically < 2.5:1 (3.2:1 max.)
Gain	25 to 41.5 dBi
3dB Beamwidth	0.8 to 7.7 degrees
10dB Beamwidth	1.5 to 12.8 degrees
Weight	11.8 kg nominal
Focal Length	756 mm
F/D	0.63
Size- max.	Reflector diameter 1230 mm max
Mounting	Rear Mounting Boss with 8 holes, M6 x 12 mm deep, 125 PCD. Plus rear mount ring with 3 holes, tapped M12, 519.6 centres.
Construction	Spun aluminium reflector. Powdercoat finish. Composite feed, painted.

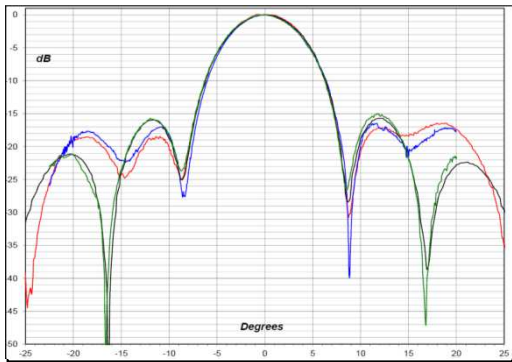
Typical Antenna Gain

This is calculated by reference to standard gain horn antennas, and cross checked with reference to the antenna beamwidth, with an estimated error of +/- 0.8dB.

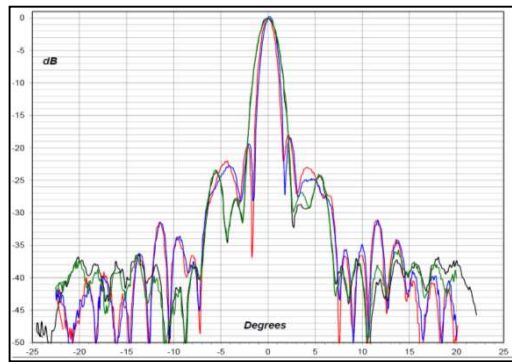




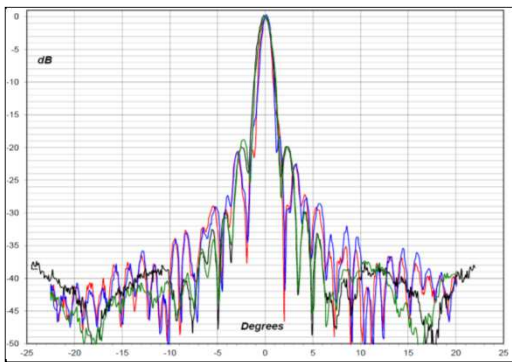
2 GHz



12 GHz



18 GHz



* Red & Blue trace = E-plane, Black & Green trace = H-plane cut