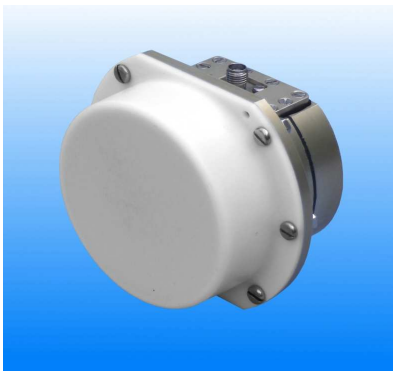




## Dual Linear Polarised Sinuous Antenna

**2 to 24 GHz**

Customer	<b>Q-par Angus Ltd</b>
P/N:	<b>QSPDP2-24S</b>
S/N:	-
Q-par ref:	<b>D2289</b>
Date:	<b>21-Mar-12</b>
Contents:	<b>Summary</b> <b>Antenna Gain</b> <b>Beamwidth / Patterns</b> <b>VSWR</b>



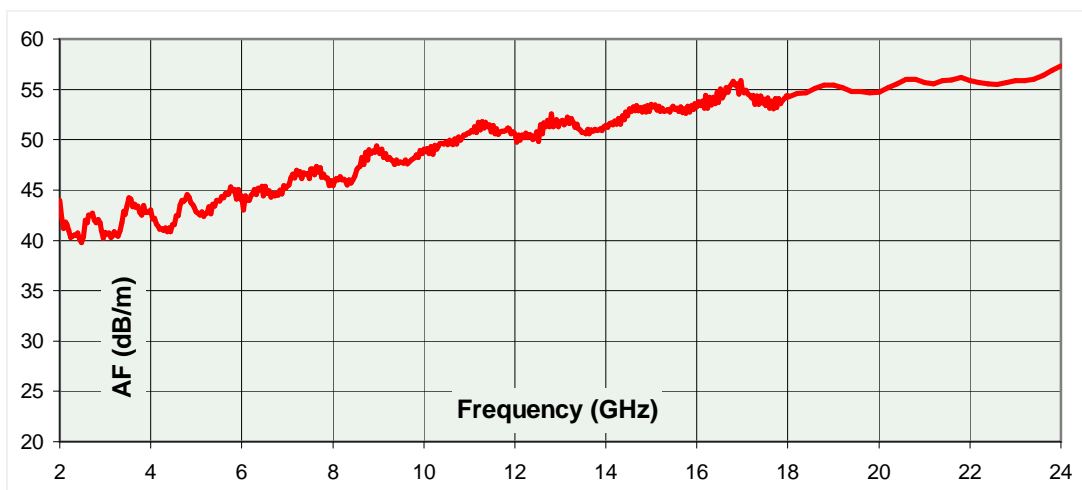
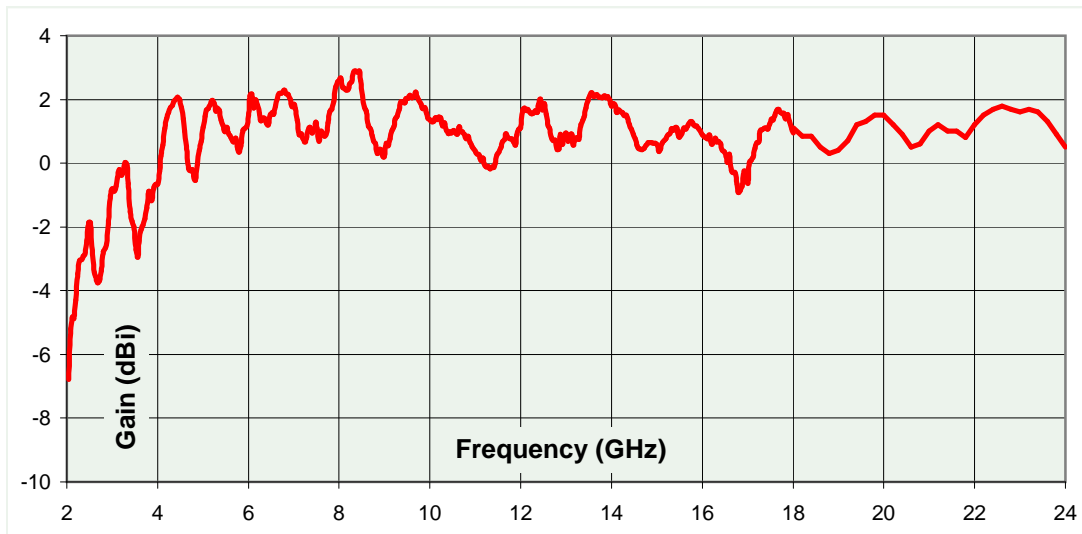
Test Report

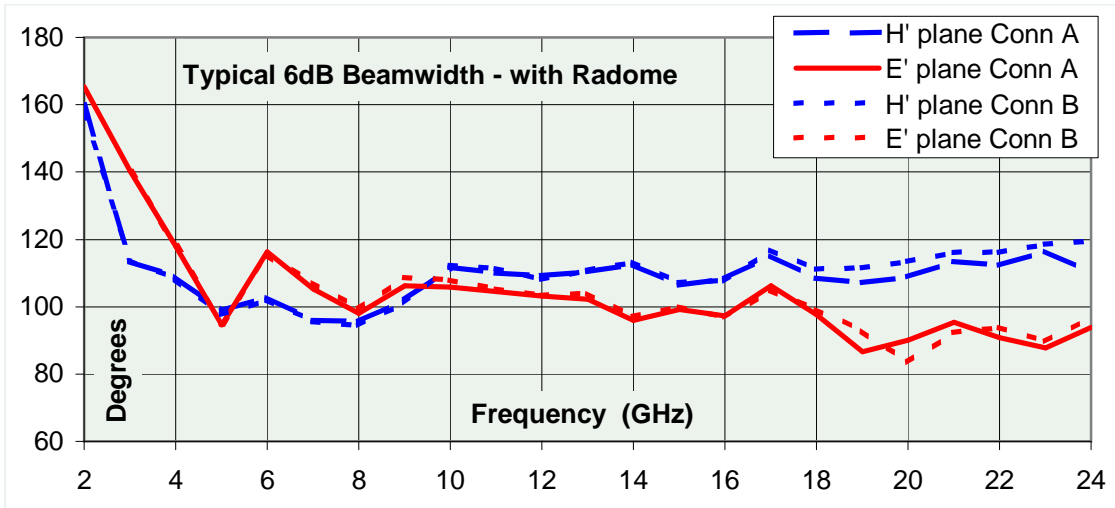
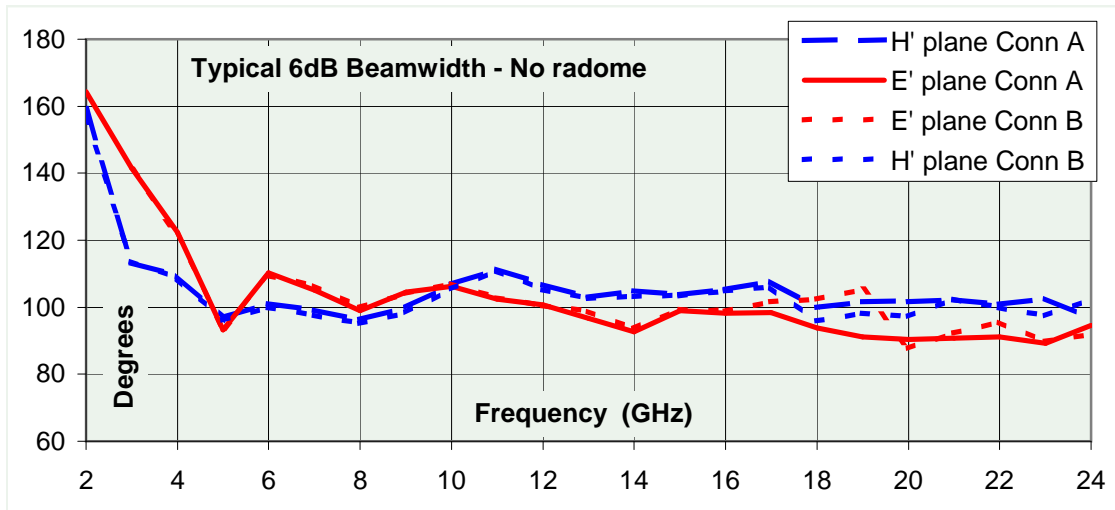
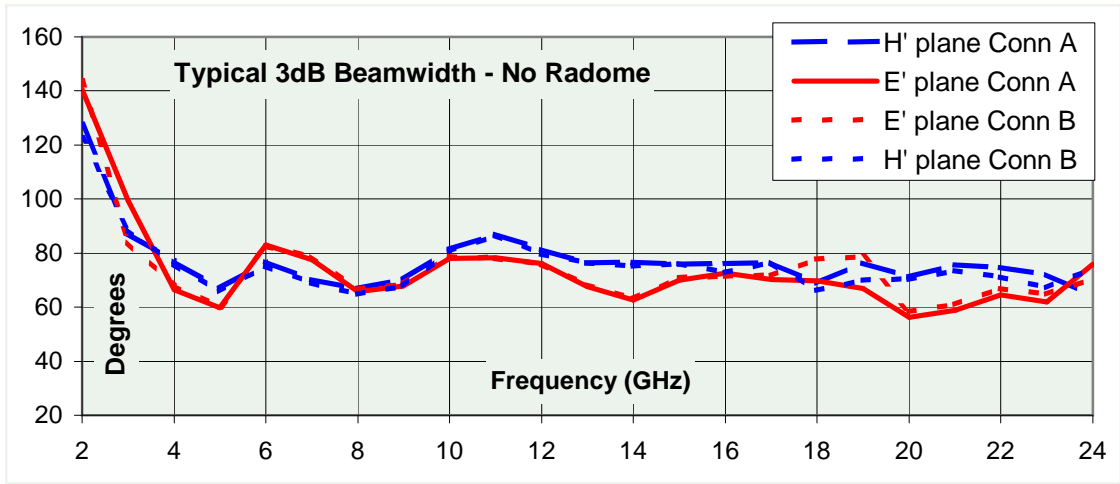
## Typical Specification

Frequency	2 to 24 GHz
Connector type	2 x SMA jack
Power Handling	2 Watt c.w.
VSWR	typically < 3 :1, < 2.6 :1 above 9 GHz
Isolation	> 30dB between connectors
Gain	-8 to 3 dBi
Antenna Factor	40 to 57 dB/m
3dB Beamwidth	145 to 60 degrees
6dB Beamwidth	165 to 87 degrees
Weight	240 g
Size- max.	81 mm flange diameter x 51 mm length (with radome)
Mounting	Integral flange
Construction	Alocrom aluminium & engineering plastics

## Typical Antenna Gain / Factor

This is calculated by reference to standard gain horn antennas, and cross checked with reference to the antenna beamwidth, with an estimated error of +/- 0.8dB.





2 GHz

14 GHz

24 GHz

