

Dual Linearly Polarised Sinuous Antenna

2 to 18 GHz

Catalogue number: **QSI-DL-2-18-S-SG**

Q-par reference: **QMS-00015**

Contents: **Summary**
Typical Antenna Gain
Typical Beamwidth / Patterns
VSWR
Isolation

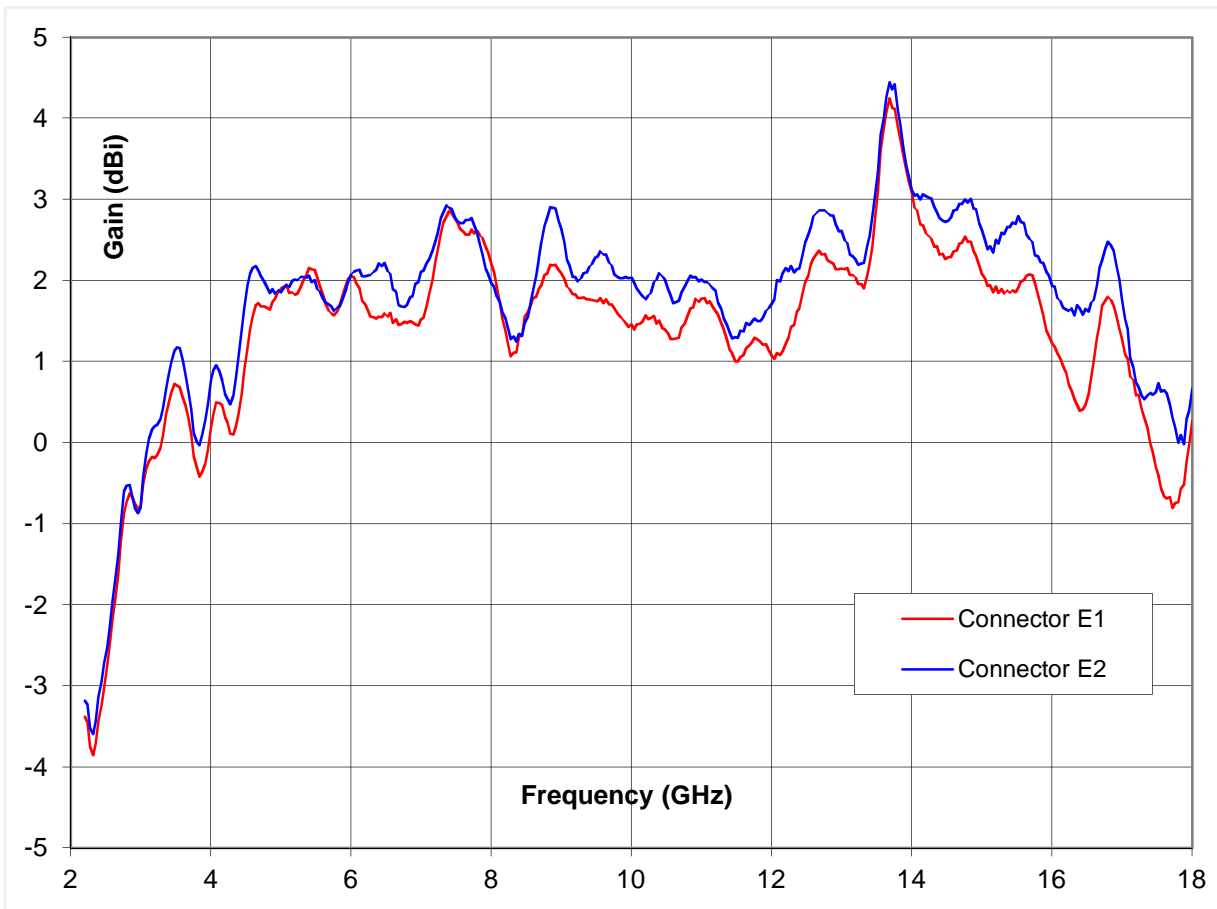


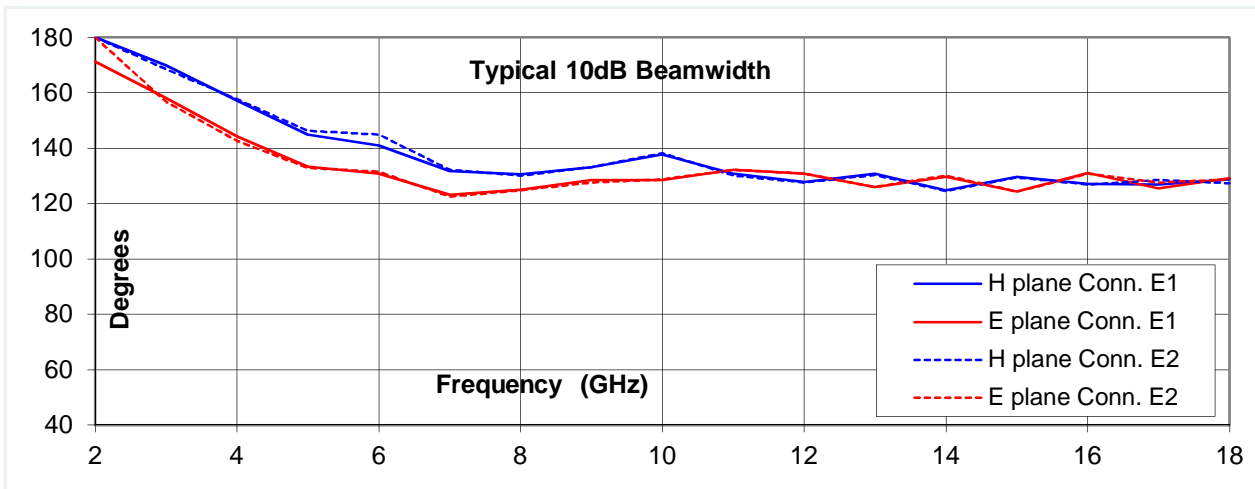
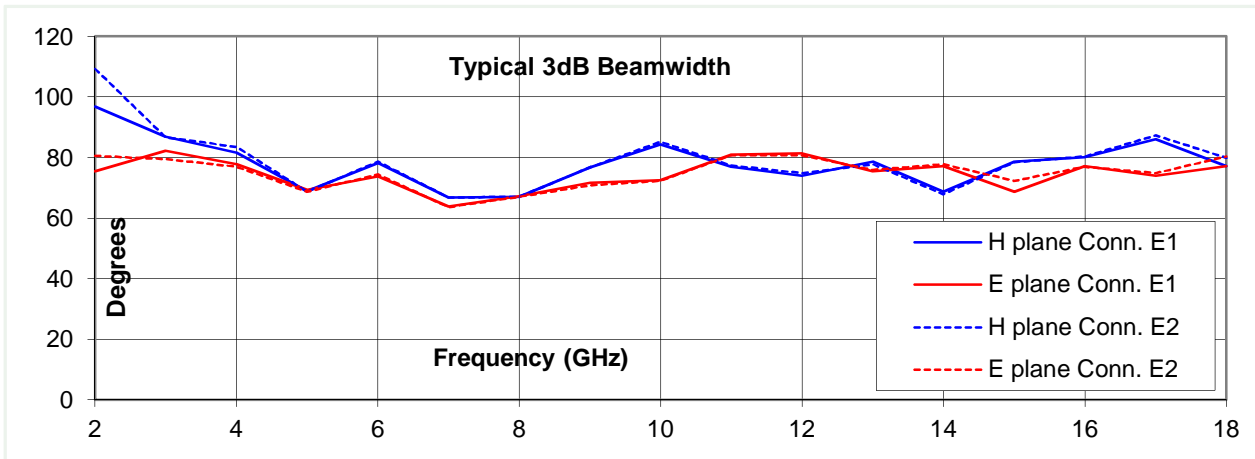
Typical Specification

Frequency	2 to 18 GHz
Connector type	2 x SMA type jack
Power handling	1 Watt c.w.
VSWR	Typically < 3.2:1
Gain	-3.8 to 4.4 dBi
Polarisation wander	Typically within +/- 10 degrees
3dB Beamwidth	64 to 109 degrees
Isolation	> 25 dB between connectors, typically > 32 dB
Weight	260 g
Size	60 mm aperture x 82 mm long (incl. Connectors)
Mounting	81 mm diameter flange with 8 holes, diameter 3.3 mm on 75 mm p.c.d.
Construction	Aluminium and Engineering Plastics, painted

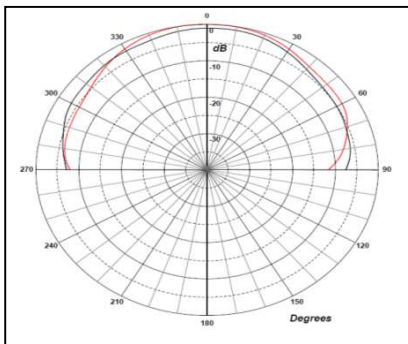
Typical Antenna Gain

Gain is calculated by reference to standard gain horn antennas, and cross checked with reference to the antenna beamwidth, with an estimated error of +/- 0.8dB.

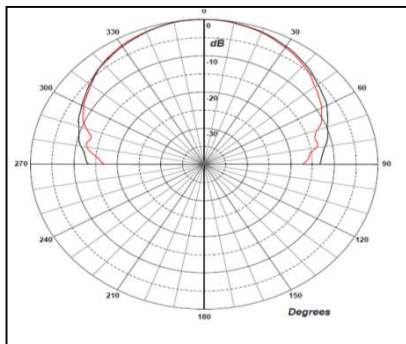




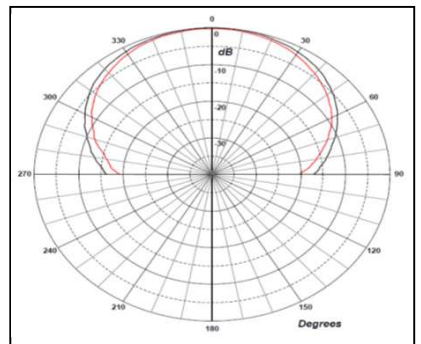
2 GHz



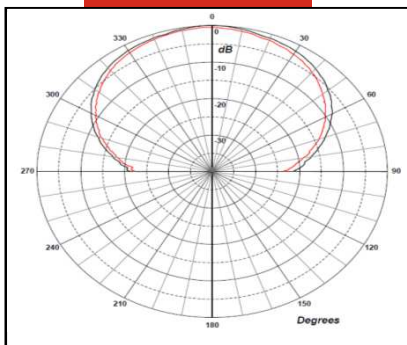
5 GHz



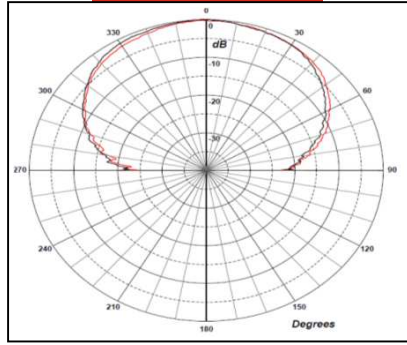
10 GHz



15 GHz



18 GHz



Note: **Red trace = E-plane**, **Black trace = H-plane**