

High Gain Horn Antenna

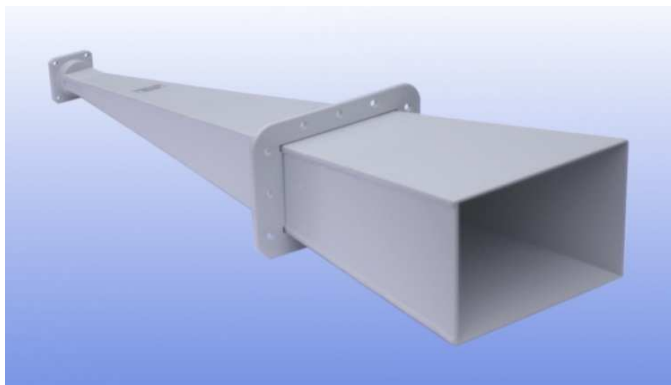
8 to 12.5 GHz

WG16 R100 WR90

Catalogue number: **QSH-SL-8-12-F-23**

Q-par reference: **QMS-00171**

Contents: **Summary**
Typical Gain / Antenna Factor at 1m
Typical Beamwidth / Patterns at 1m
VSWR



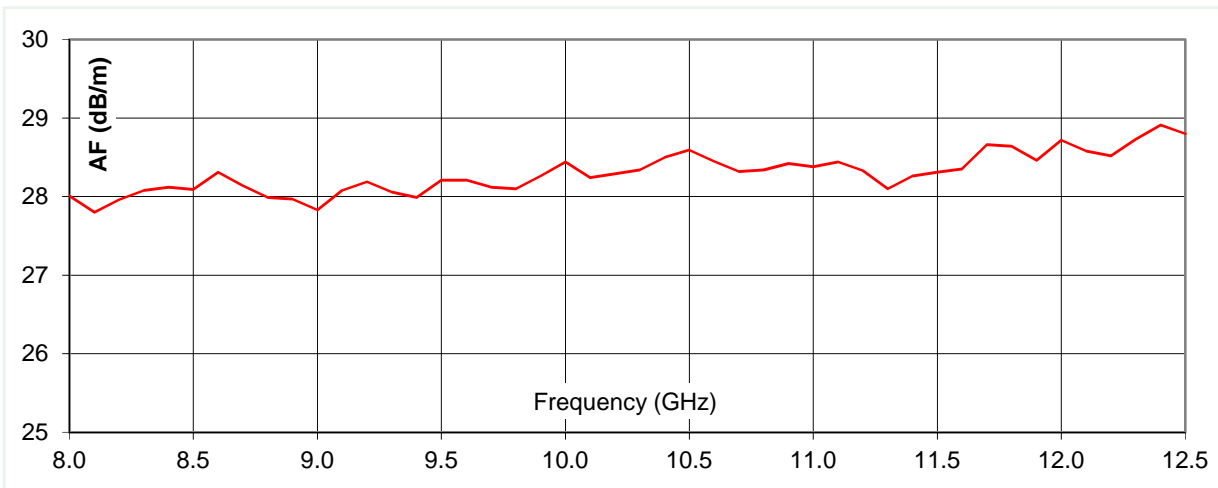
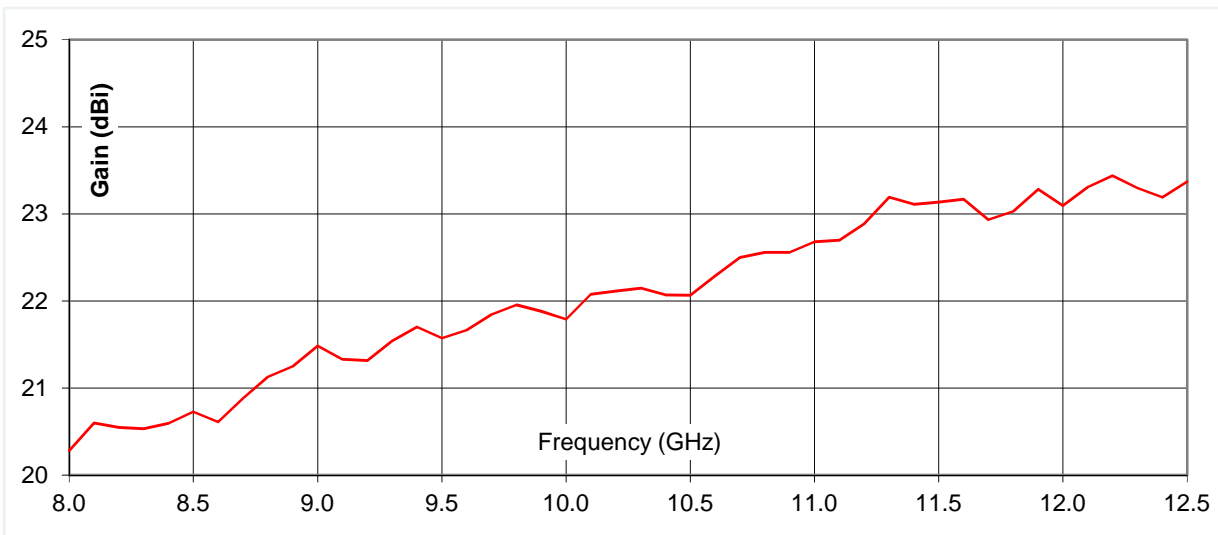
Test Report

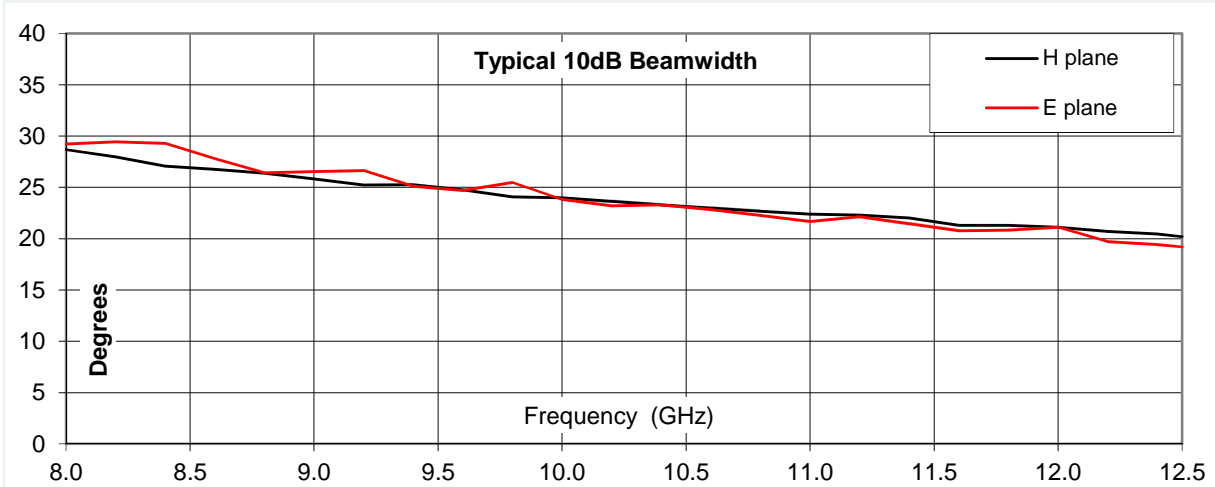
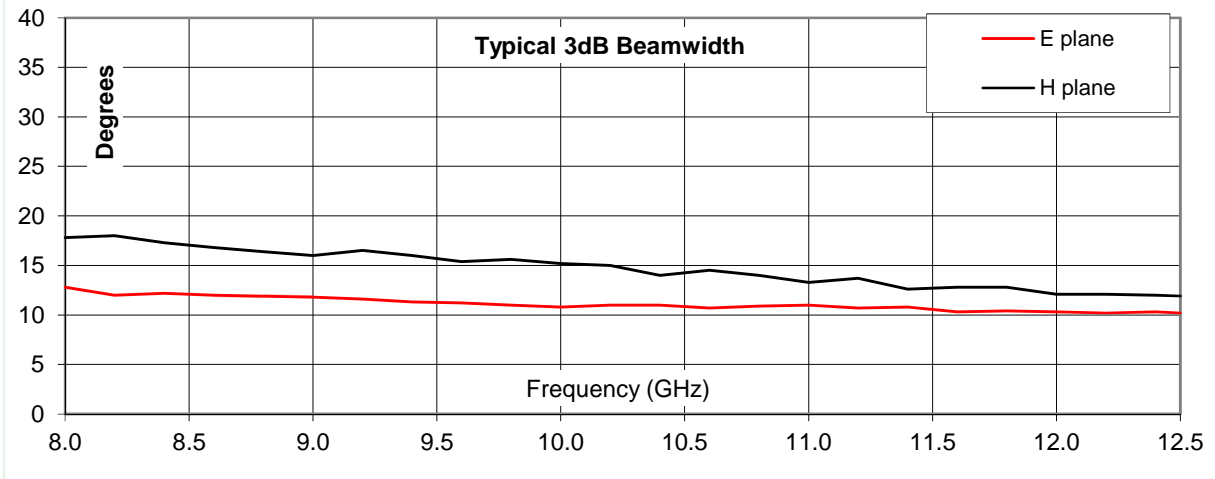
Typical Specification

Frequency	8 to 12.5 GHz
Connector type	UBR100 waveguide Flange
Power Handling	10 kW c.w.
VSWR	< 1.15 :1
Gain	20.5 to 23.4 dBi
Antenna Factor	27.8 to 28.9 dB/m
3dB Beamwidth	10 to 17 degrees
10dB Beamwidth	19 to 29 degrees
Weight	1.2 kg nominal
Size- max.	169 x 112 mm external aperture x 531 mm long
Mounting	12 holes, diameter 6 mm, 35 mm centres
Construction	Welded aluminium, powdercoat finish.

Typical Antenna Gain / Factor at 1 metre

This is calculated by reference to standard gain horn antennas, and cross checked with reference to the antenna beamwidth, with an estimated error of +/- 0.8dB.

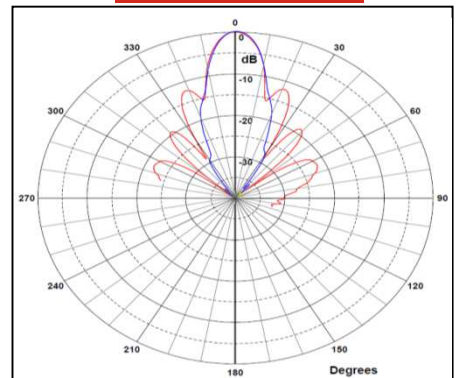
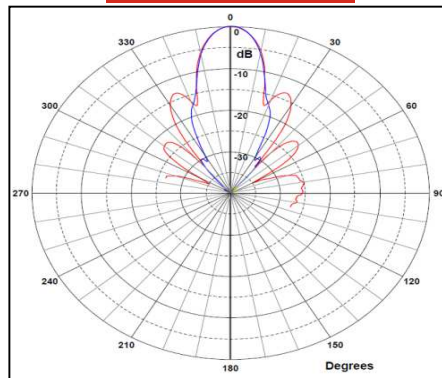
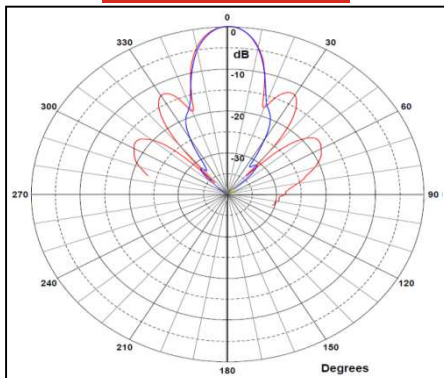




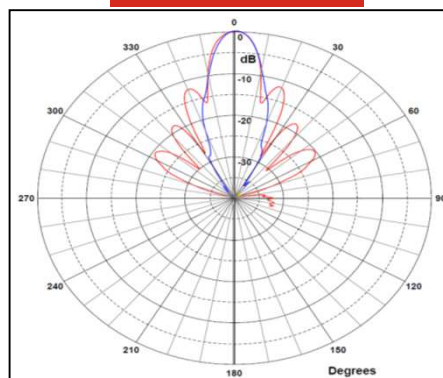
8.0 GHz

9.0 GHz

10.6 GHz



11.6 GHz



Red trace = E-plane, Blue trace = H-plane cut