

Standard Gain Horn Antenna

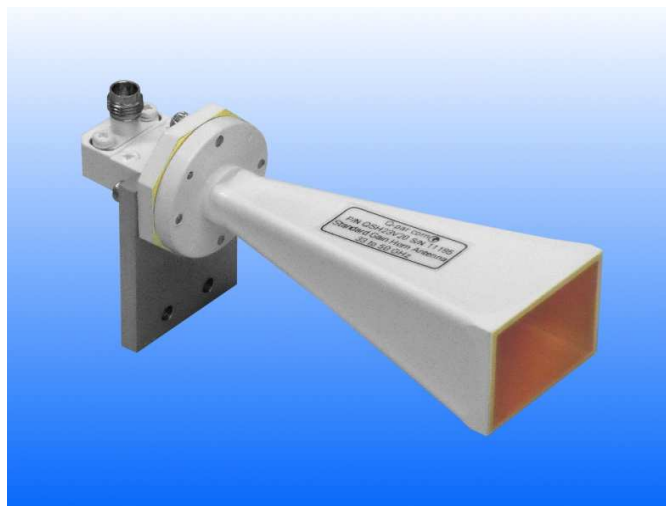
33 to 50 GHz

WG23 WR22 R400

Catalogue number: **QSH-SL-33-50-V-20**

Q-par reference: **QMS-00242**

Contents: **Summary**
Typical Gain / Antenna Factor
Typical Beamwidth / Patterns
VSWR



Test Report

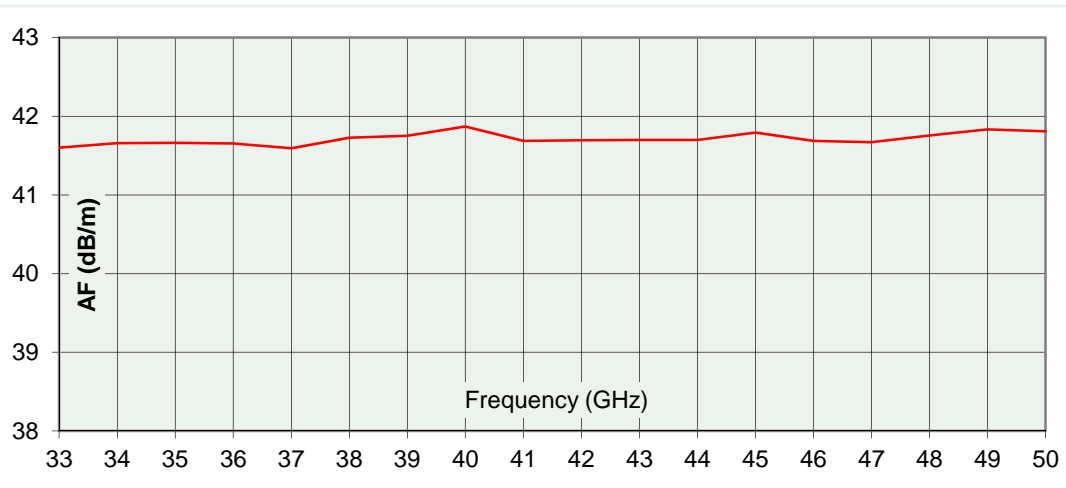
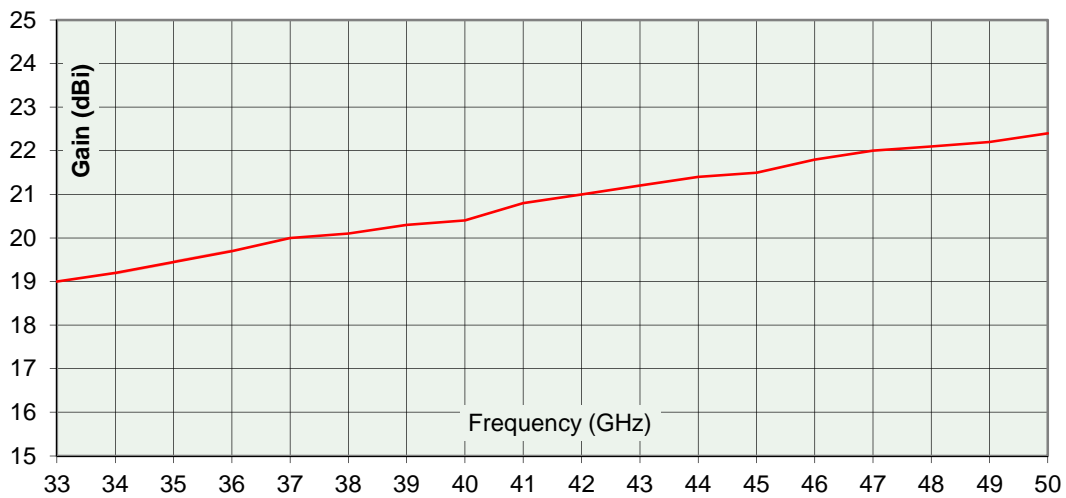
SD 23/08/2013 6851

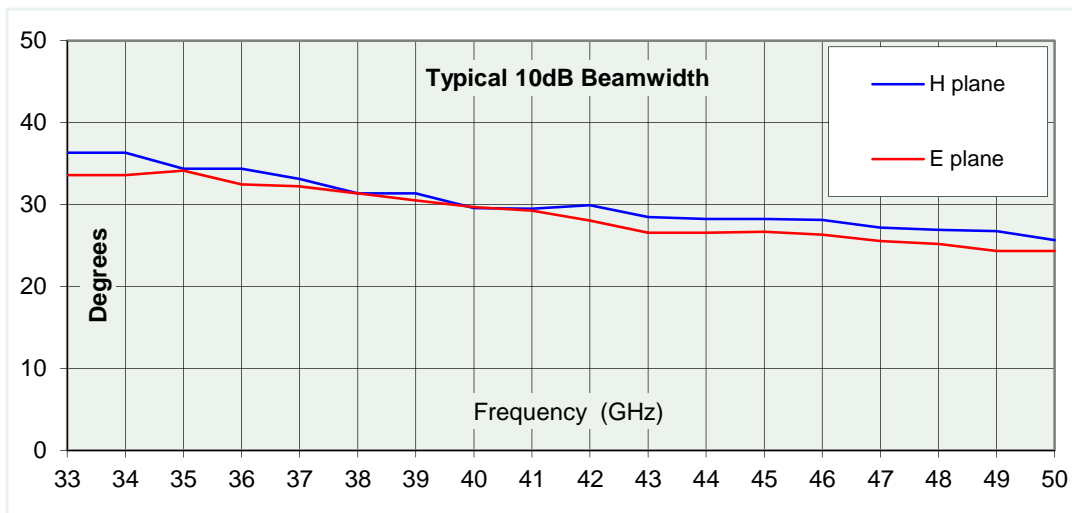
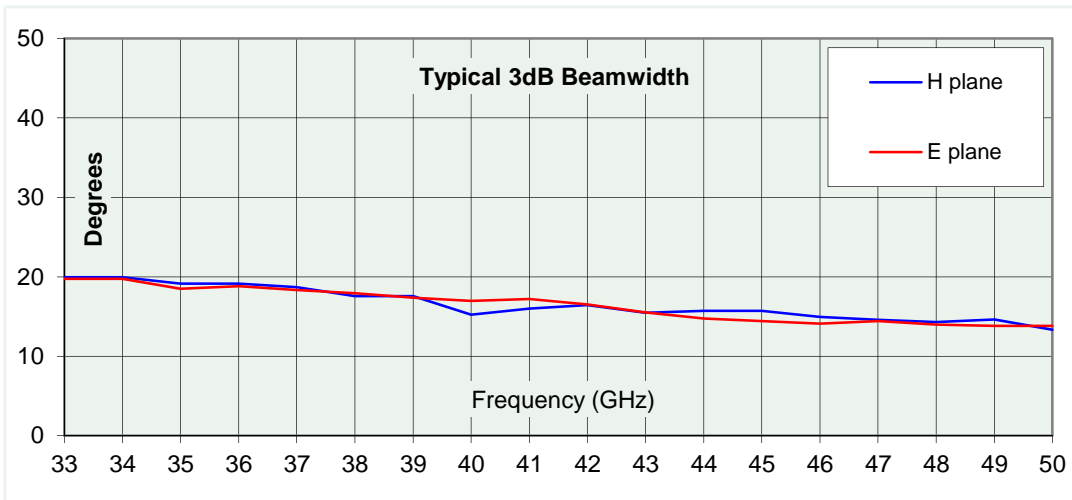
Typical Specification

Frequency	33 to 50 GHz
Connector type	V type jack (2.4 mm)
Power Handling	5 Watt c.w.
VSWR	Typically <1.4 :1
Gain	19 to 22.4 dBi
Antenna Factor	41.6 to 41.9 dB/m
3dB Beamwidth	13 to 20 degrees
10dB Beamwidth	24 to 36 degrees
Weight	210 g nominal
Size- max.	35 x 27 external aperture x 104 mm long
Mounting	Mount plate with 2 holes, tapped M4, 18 mm centres
Construction	Electroformed copper horn, painted. Aluminium transition, plated. Anodised aluminium mounting plate

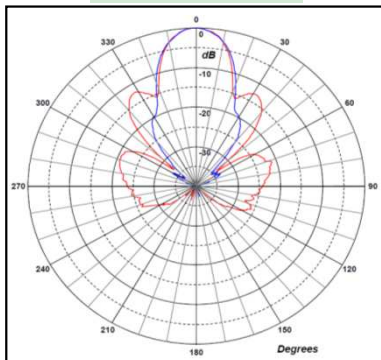
Typical Antenna Gain / Factor

This is calculated by reference to standard gain horn antennas, and cross checked with reference to the antenna beamwidth, with an estimated error of +/- 0.8dB.

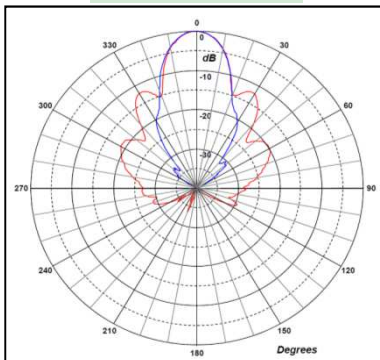




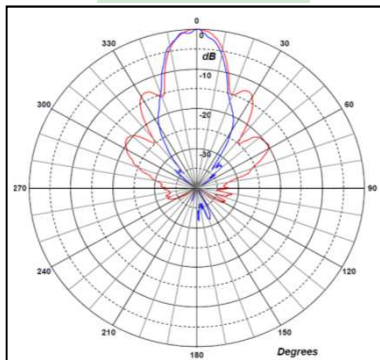
33 GHz



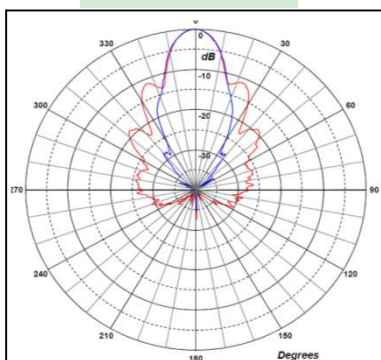
37 GHz



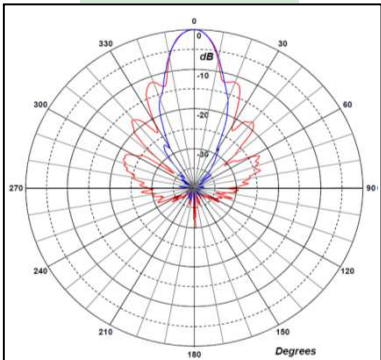
40 GHz



45 GHz



50 GHz



Red trace = E-plane, Blue trace = H-plane cut