

High Power Horn Antenna

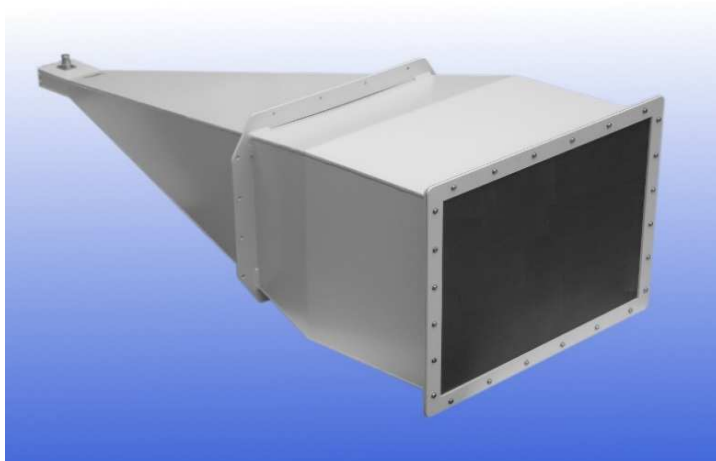
2.6 to 4 GHz

WG10 R32 WR284

Catalogue number: **QSH-SL-2.6-4-C-SG-L**

Q-par reference: **QMS-00494**

Contents: **Summary**
Typical Gain / Antenna Factor at 1m
Typical Beamwidth
VSWR



Test Report

Typical Specification

Frequency	2.6 to 4 GHz
Connector type	SC Jack
Power Handling	10 kW peak; 700 W mean
VSWR	Typically < 1.35 :1
Gain	19.6 to 22.2 dBi
Antenna Factor	18.8 to 20.1 dB/m
3dB Beamwidth	9 to 20 degrees
Weight	10.8 kg nominal
Size- max.	497 x 377 ext. aperture x 1140 mm long
Mounting	Mount flange with 8 holes, 95 mm centres, in two rows 316 mm apart. Plus 8 holes, 70 mm centres, in two rows 430 mm apart
Construction	Welded aluminium, powdercoat finish. Dielectric radome.

Typical Antenna Gain / Factor at 1 metre range

This is calculated by reference to standard gain horn antennas, and cross checked with reference to the antenna beamwidth, with an estimated error of +/- 0.8dB.

